



**DCG**

**DERBY COLLEGE GROUP**

**HIGHER  
EDUCATION  
COURSES  
FOR 2024-2025**



# CONTENTS

Welcome to Derby College Group	3
Step up to higher education	4-5
Our commitment to quality	6-7
Qualifications explained	8-11
Supporting your studies	12-13
Library services	14-15
Welcome to our community	16-17
East Midlands Institute of Technology (EMIoT)	18-19
How to apply	20
Open days information	21

## Programme listings

Animal Management	22-27
Business, Leadership and Management	28-31
Engineering	32-37
Equine Science	38-41
Health and Social Care	42-43
IT, Digital Skills and Computer Science	44-45
Professional Construction	46-57
Public Services, Security and Offender Management	58-61
Sport	62-65
Teacher Training, Coaching and Mentoring	66-71
Money Matters	72-73
Your College Life	74-75



**100% OF STUDENTS**

said staff were friendly and professional at all stages of the application and enrolment process.

*Source: Higher Education Post-Induction Survey, November 2023*

# WELCOME TO DERBY COLLEGE GROUP

**If you're considering higher education, you're about to make a decision which will change your life. It is vital to research thoroughly, think carefully and choose wisely – and this prospectus is an excellent starting point.**

At Derby College Group (DCG), we recognise that higher education is a sound investment in your future. Whether you want to gain an edge in the job market, enhance your promotion prospects or even chart a completely new career direction, we can help you to achieve your ambitions.

Our aim is to remove barriers for advancement to higher education, to widen participation and to impact positively on your life chances and future earning potential.

DCG's portfolio includes everything from Foundation Degrees, Honours Degrees and Higher Apprenticeships to specialist qualifications for professionals seeking to improve their skills. We have also introduced our first Higher Technical Qualifications (HTQs) in Professional Construction, Engineering, Software Development and Health and Social Care, with more set to follow in a broader range of subjects.

Underpinned by robust links with employers and enterprising partnerships with universities, all our courses provide first-class, up-to-date content and excellent teaching. Don't just take our word for it: in the 2023 Teaching Excellence Framework (TEF) exercise we were awarded Gold for student outcomes, Silver for student experience – and Silver overall – by an expert panel from the Office for Students (OfS).

One reason for our success is that we focus on the key attributes and knowledge that employers need in the workplace, paving the way for students to excel in sustainable, well-paid careers. Statistics\* show that more than 90% of our students progress to positive destinations within six months of completing their course.

You'll be taught by enthusiastic staff with vast experience in their fields. You'll also benefit from the flexibility of our study options, including part-time routes to help you balance your studies with family or work commitments. Of course, the chance to study close to home also makes your learning more affordable.

Do take the time to find out more: explore our website, join one of our open days and talk to our staff and students. You'll discover how DCG can take your learning – and your achievements – to a whole new level.

\* Graduate Outcomes: [www.graduateoutcomes.ac.uk](http://www.graduateoutcomes.ac.uk)



**Mandie Stravino OBE**  
Chief Executive  
Derby College Group



**Roberta Hall**  
Head of Higher Education  
Derby College Group

# STEP UP TO HIGHER EDUCATION

Our aim is to deliver authentic and agile higher education programmes which meet the needs of individuals, employers and society alike. Studying with us will open many exciting doors for you.

As demand for highly educated and skilled professionals is growing across our city, county and region, our courses offer new progression routes for ambitious individuals.

Aligned with regional and national strategies, they are also ideal for employers to integrate into their long-term workforce development plans. Part-time learning opportunities make it easy to fit studies around work schedules.

As a college, we are regulated by the Office for Students (OfS) and on the approved register of HE providers.

There are so many reasons to make us your first choice:

- You will gain nationally recognised qualifications alongside higher level skills, knowledge, behaviours, attitudes and professional standards that meet the needs of employers, provide progression routes and improve your life chances. We have been praised by the OfS for the way we help students advance to highly skilled employment or further study.
- Employers have significant input into our courses. You will keep in touch with all the latest developments in your sector or profession and build an invaluable network of contacts.
- Our partnerships with universities allow you to progress to other higher level courses with ease.



- Our experienced and highly qualified teaching teams are dedicated to your success. Their enthusiasm for their subjects will be your inspiration.
- You will also benefit from working with Higher Education Academic Coaches to develop your study skills.
- We promote scholarship skills for higher education students at DCG. We will help you build attributes like critical thinking, problem-solving, analysis and reflection.
- We provide the right level of support to boost your confidence and motivation – including programmes tailor-made for students who have been out of education for a while.
- You will discover all the help you need to chart your future after you have completed your studies. We provide a wide range of specialist advice to help you decide what your next step should be.
- Our excellent facilities will bring your learning to life, thanks to our award-winning campus regeneration programme. We continue to invest in first-rate equipment, resources and learning environments, including dedicated higher education spaces.

- We enrich your studies with exciting new opportunities. These could include hands-on projects, work placements, community initiatives and talks by inspirational guest speakers.
- Welcoming and friendly, we have a diverse but close-knit student community. Your social circles will expand as you meet like-minded students.
- All these opportunities are available on your doorstep. We are easy to reach, with colleges in Derby and Derbyshire served by good public transport links. Check out the helpful map of transport routes on our website.



*“I’ve really enjoyed College. The course has given me all the knowledge I need to carry out my job as a site manager, so I’m really happy with it. It’s a great course for people in my role. I’d definitely recommend it.”*

**Jack Foster**

*Jack took a Level 4 HNC qualification while working as a site manager for construction engineering company Eurovia.*

# OUR COMMITMENT TO QUALITY

We are dedicated to providing you with exceptional levels of support and a high-quality learning experience. We are also committed to raising your aspirations and enhancing your employability.

## Teaching excellence recognised

The impressive standard of DCG's higher education programmes was endorsed in the 2023 Teaching Excellence Framework (TEF) exercise.

The Group was awarded Gold for student outcomes, Silver for student experience – and Silver overall – by an expert panel from the Office for Students (OfS).

The TEF rates universities and colleges for excellence against minimum standard requirements. It seeks to ensure that all students can feel confident of a high-quality education and positive outcomes.

DCG received extensive praise from the assessment panel across key areas. These included its tailored student support, its pastoral care, its focus on the student voice and its excellent completion and progression rates.

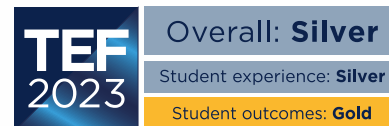
The final report stated: "Overall, the student experience is excellent, life chances are enhanced, and satisfaction is above expectations. DCG offers opportunities in higher education that would not be otherwise available to some students.

"DCG is committed to providing a high-quality teaching and learning experience, aligned to student needs and characteristics and employer requirements, and extending opportunities for all students, irrespective of background."

The panel also praised the "highly supportive learning environment" at DCG, including the use of dedicated Academic Support Coaches to help students develop their academic abilities, presentation skills and confidence.

They added: "No student is left behind. Inclusion specialists, coaches and teachers ensure that all students with a disability continue and achieve in line with their peers."

Universities and colleges are assessed every four years through the TEF. The assessment panel draws on a considerable amount of data as well as student interviews.



Teaching Excellence Framework



## Promoting scholarship

We engage our staff and students in research and learning at a high level. You will develop scholarship skills such as problem-solving, critical thinking, analysis, synthesising information, reflection and evaluation. This might be via:

- projects that showcase creativity
- working with a community group on a social action project
- attending a conference or seminar
- carrying out a research project
- working with a local employer on a collaborative project
- helping develop programme assessments

Such experiences will enhance your career prospects, showing potential employers that you have a broad portfolio of skills which can be applied to different workplace scenarios.

Our lecturers are constantly involved with scholarly activity to enhance their subject knowledge, keep up to date and develop their teaching skills. We encourage lecturers and students alike to share their work, so there are opportunities to showcase projects at local, regional and national conferences.

## Widening opportunities

In line with our dedication to improving social mobility, we have joined other colleges and universities across Derbyshire and Nottinghamshire to raise aspirations and awareness of routes into higher education. These routes cover all aspects of higher education, including college-based provision and Higher and Degree Apprenticeships.



**98% OF STUDENTS**

said they were satisfied with the quality of their course so far.

*Source: Higher Education  
Post-Induction Survey,  
November 2023*



# QUALIFICATIONS EXPLAINED

It is very important that you choose a course to suit your individual needs, abilities and aspirations. Here is a brief guide to some of the study options available at DCG.

## Foundation and Honours Degrees

We have a well-established range of Foundation Degrees which combine technical and professional skills. These are widely supported by employers who contribute to the development and delivery of the programmes. Once you have completed a Foundation Degree, you can often progress directly to the final stages of an Honours Degree – with DCG or at university – or you can advance to further professional qualifications.

We offer degrees validated by and in partnership with the University of Derby and Sheffield Hallam University. You will receive your qualification from the relevant university and benefit from clear progression routes to the next stage of learning.

- **DCG offers degrees in Animal Management; Animal Management (Zoo and Wildlife); Engineering; Equine Science; Criminal Justice (Security and Offender Management); Health and Social Care; Software Development; and Sport Coaching, Performance and Education.**

**Sheffield  
Hallam  
University**

In partnership with  
 **UNIVERSITY OF  
DERBY**







**98% OF STUDENTS**

said it was easy to apply to DCG.

*Source: Higher Education  
Post-Induction Survey,  
November 2023*



## Higher National Certificates

Higher National Certificates (HNCs) are employer focused and vocational, with a greater emphasis on practice rather than theory. Highly valued by employers, they also offer an alternative route into higher education.

The HNC usually takes two years of part-time study, although DCG's flexible approach means that other study routes are often available. A HNC qualification can sometimes enable you to enter the second year of a degree programme directly.

- DCG offers HNCs in subjects such as Business; Engineering and Professional Construction.

## Higher Technical Qualifications

If you are looking for a more vocational programme which is designed and led by employers, the new Higher Technical Qualifications (HTQs) provide an alternative to degrees and apprenticeships.

Independently approved against the knowledge, skills and behaviours that employers say they need, these are technical qualifications at Levels 4 and 5 leading to high skilled and highly paid jobs in a wide range of sectors.

An ideal progression route from A-levels and T Levels, they are designed to give you a step up in your chosen career or to open doors to further study at Honours Degree level. For employers, they provide a trusted route to ensure their workforce is equipped for the future.

Approved HTQs are new and existing Level 4 and 5 qualifications endorsed by the Institute for Apprenticeships and Technical Education. This shows they are approved against occupational standards decided by employers.

Full roll-out of HTQs is expected to be completed in 2025 and DCG's portfolio will include courses in subjects ranging from technology to criminal justice.

- HTQs at DCG currently include various HNCs in Engineering and Professional Construction plus Foundation Degrees in Software Development and Professional Practice in Health and Social Care.

# QUALIFICATIONS EXPLAINED

## Higher and Degree Apprenticeships

Higher and Degree Apprenticeships enable you to achieve university-level qualifications via the 'earn-as-you-learn' route. You will receive training up to degree level (both on and off the job), a salary and the opportunity to start moving your career forward in the right direction from the word go – all with the support of your employer and teachers at DCG.

Higher and Degree Apprenticeships form part of a government strategy to build a well-qualified workforce trained to degree level. They can lead to further academic qualifications such as an Honours Degree or to professional qualifications that are specific to an industry – for example, engineers can take steps to achieve chartered status.

The majority of apprentices continue working towards promotion at the company with which they trained but the higher level qualification can also help you progress to another company if that is what you have in mind.

- **DCG supports Higher and Degree Apprenticeships for sectors such as education, engineering and professional construction.**



## Professional development programmes

Continuing with your professional development is crucial if you want to accelerate your progress up the career ladder. You may need to improve your management and leadership skills, advance your technical know-how, add impressive new qualifications to your CV or turn your talents to teaching.

- **DCG offers a range of specialist programmes – at Levels 4 to 6 – for professionals progressing their careers in fields such as teaching, coaching and mentoring; personal training; and sports massage therapy.**

## Access to Higher Education

Access to Higher Education Diplomas provide you with a stepping stone to a higher level of study. They are ideal if you are considering a career change, want to return to study or feel you need a more gradual introduction to undergraduate education.

They are available to anyone over the age of 19, irrespective of previous qualifications. All Access programmes feature Maths, English, IT and Study Skills to ensure you have a good standard of general education to progress to the next stage of your learning.

- **DCG offers an Access programmes in Animal Science.**



**100% OF STUDENTS**

said their enrolment was handled efficiently and effectively.

Source: Higher Education  
Post-Induction Survey,  
November 2023

### A-levels for adults

We offer highly flexible routes to A-level qualifications in Maths and Biology. Designed for those aged over 19, these intensive one-year courses are taught two evenings per week at our Joseph Wright Centre in the heart of Derby so that you can fit your studies in with your work and home commitments.

A-levels can give you valuable UCAS points for entry to university or deepen your understanding so that you are well prepared for a career change or promotion to a more senior role. The A-level Maths could, for instance, pave the way to a career in engineering while Biology is invaluable for senior roles in healthcare.

- **DCG offers A-levels for adults in Biology and Maths.**



### Are you a current student?

If you are studying with us at Level 3 and considering your next steps, we can now guarantee you direct progression to one of our higher education courses.

Your place is secure as long as you achieve the relevant entry criteria and have a good attendance and performance record during your current DCG studies. It is also dependent on there being sufficient student numbers for the programme to run.

# SUPPORTING YOUR STUDIES

Embarking on study at higher education level can sometimes be daunting – especially if you are returning to learning after a gap. We offer wide-ranging study support to help you make the most of the opportunities ahead.

## Why are study skills important?

Study skills are transferable. They not only prepare you for your learning programme and any further education and training you may undertake, but also equip you with abilities which will stand you in good stead throughout your career.

Coupled with the academic knowledge you acquire, the development of effective study skills will help you become a more successful professional.

## What can we help with?

- Critical thinking
- Reflective practice
- Essay structure
- Grammar and punctuation
- Referencing
- Academic regulations
- Time management
- Critical reading

*and much more ...*



## Academic Coaches

You will benefit from working with Higher Education Academic Coaches who will help you develop your study skills. This can be especially valuable for those students who are new to higher education.


The support is delivered via one-to-one sessions or group work, covering vital areas such as research skills and how to avoid plagiarism. Your Academic Coach will also signpost you to a range of resources to meet your individual needs and preferences, helping you put together a tailored action plan to achieve your goals.

## 24/7 access to information

You can use our online learning system known as Moodle and/or Microsoft Teams on a 24/7 basis. They give you access to programme materials such as hand-outs, presentations and online forums.

We have dedicated Moodle/Teams pages for study support resources that you can download to assist with your academic work. In addition, you can book one-to-one study support tutorials and can be sent email reminders about your appointments.

We also provide a dedicated Higher Education 360° Student Hub where you can access all information relevant for higher education, including careers advice, study skills, student voice opportunities and bursary/hardship applications.



*“Our lecturer was so approachable and cared about each student’s individual situation. We’re all from different areas of education but she listened and engaged with us, adapting the course so it addressed our various sector needs.”*

**Amy Bamfordl**

*A specialist teacher at the Blend Youth Project in Derby, Amy joined DCG to study for her PGCE.*



# EXCELLENT LIBRARY SERVICES

Library services are available at all our main campuses, helping you find the information you need to support your learning. Facilities include study spaces, computers with Internet access, printing and photocopying resources.

Studying at a higher level involves lots of research. You will find yourself reading, reading and reading – and then reading some more!

Our library offers a broad range of text books, ebooks, reference materials, newspapers, magazines and careers information. This will include many of the programme-specific texts detailed on your reading lists – both in print and in electronic form.

There is also an extensive range of resources available to help you develop your study skills and equip you to become an independent learner.

## At your service

### We also provide:

- inter-library loans – borrowing books, journals and articles from other local and national libraries on your behalf. We can request books from a variety of sources, ranging from the University of Derby library to the British Library
- reservations – a service where you can reserve items on loan or on order to make sure the next available copy is 'reserved' for you as soon as it becomes available
- click and collect – you can search the library catalogue from anywhere, 'click' on an item in stock and 'collect' at a time and site that is convenient for you



## What can we help with?

### Understanding digital practices:

- Staying safe and presenting yourself online

### Finding information:

- Searching library catalogues
- Search tips and techniques

### Using information:

- File sharing
- Avoiding plagiarism
- Citing references
- Copyright compliance

### Creating information:

- Assistance with using Office 365 or other Office applications
- Using media capture devices



# 98% OF STUDENTS

said they were given clear guidance at their interview about their next steps.

*Source: Higher Education Post-Induction Survey, November 2023*

# WELCOME TO OUR COMMUNITY

As one of the leading college groups in the country, we offer all the first-rate facilities you would expect. You will benefit from industry-standard equipment and latest technology amid a dynamic campus setting.

## The Roundhouse

### Technical and Professional Skills College

The Roundhouse on Pride Park is an iconic setting for vocational studies. Higher level programmes taught here include those in subjects such as Business; Engineering; Professional Construction; and Teacher Training, Coaching and Mentoring.

## The Joseph Wright Centre

### Post-16 Academic and Arts College

The Joseph Wright Centre boasts exceptional resources for academic studies and advanced vocational programmes. Based in the city centre, it includes IT suites, modern science laboratories, a dance studio, a music basement and a games development suite. It is the current base for our higher education provision in Software Development.



## Broomfield Hall

### Land-based and Leisure College

Broomfield Hall, a working estate in the Derwent Valley, is the location for our land-based provision, including the Animal Science Access programme and higher level programmes in Animal Management; Equine Science; and Criminal Justice. The campus features impressive facilities, including a library/learning resources centre. With its sports hall and playing fields, it is also the base for our Sport Coaching, Performance and Education Foundation Degree.



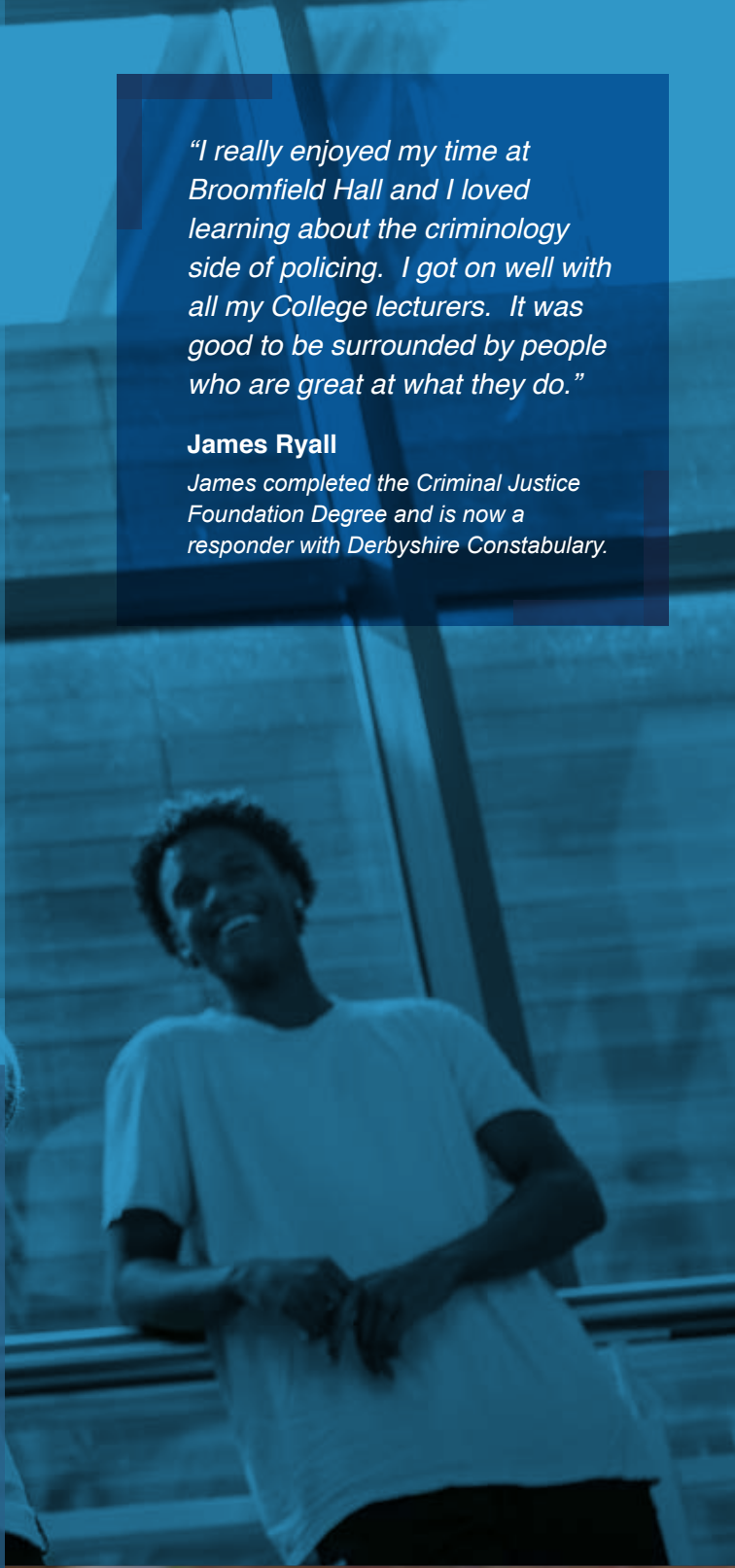




*"I really enjoyed my time at Broomfield Hall and I loved learning about the criminology side of policing. I got on well with all my College lecturers. It was good to be surrounded by people who are great at what they do."*

**James Ryall**

*James completed the Criminal Justice Foundation Degree and is now a responder with Derbyshire Constabulary.*



# NEW INSTITUTE SET TO OPEN ITS DOORS

Work has begun on exciting new facilities to promote technology learning at DCG – and foster a future-fit workforce for digital and low carbon economies across the region.

Due to open in September 2024 at the Roundhouse, a new building project has been launched at DCG to form part of the East Midlands Institute of Technology (EMIoT).

DCG is a key partner in this pioneering initiative, which aims to create the advanced workforce to lead the digital revolution, otherwise known as Industry 4.0.

Run in association with the University of Derby, Loughborough University and Loughborough College, the Institute will help ensure that learning programmes deliver skilled professionals with the right levels of technical mastery for the many careers now emerging in the clean growth arena.

To achieve these aims, the Institute is working closely with global powerhouse employers, including Rolls-Royce plc, Uniper, Toyota, National Grid ESO, Alstom and Bloc Digital.

At DCG, the EMIoT will see expanded facilities for specialist programmes, including industry-informed and e-enabled Higher Technical Qualifications (HTQs).

The goal is to broaden opportunities for those wishing to retrain or upskill mid-career as well as young people entering the workforce.

The facilities, an extension to the Stephenson Building, will feature state-of-the-art classrooms and collaborative workspaces to provide students with an immersive learning experience. They will also serve as a hub for innovation, collaboration and industry partnerships.

One of 21 Institutes of Technology being established across England, the EMIoT is supported by the Department for Education and the Gatsby Foundation.

By 2030 it is set to have 1,200 students on its books. DCG courses due to come under the auspices of the Institute range from T Levels and Extended Diplomas to HNCs, Higher Technical Qualifications, Foundation Degrees and Honours Degrees in various STEM subjects.

Looking ahead, DCG aims to develop further EMIoT programmes in computing, business, health and social care, architectural technology, quantity surveying, civil engineering and STEM teacher training.

It will also introduce micro credentials – short courses which are typically taught over a period of 4 to 12 weeks. These enable individuals to reskill for careers in rapidly growing and dynamic industries, without the time and financial commitment of a full study programme. They can stand alone as independent credentials or provide academic credits towards validated programmes.

*Artist's impression of the EMIoT*





East Midlands  
Institute  
of  
Technology

Artists impression

*“I didn’t anticipate I would be coming back to DCG. However, I am absolutely delighted to lead the onsite work for the construction of the IoT. And it is bringing back many fond memories.”*

### Happy return for site manager Ellis

Site Manager for Davlyn Construction, Ellis Boyall – himself a former DCG higher education student – has returned to the Roundhouse to manage the building work on the EMIoT.

Ellis initially joined DCG to study Carpentry and then went on to complete a Level 3 NVQ Diploma in Construction Contracting Operations at the Hudson and Johnson Buildings. He progressed to a Foundation Degree in Construction and the Built Environment and subsequently gained a BSc (Hons) from Nottingham Trent University.

He has since had considerable experience in construction, and has led many projects, including local schemes at Brackenfield School in Long Eaton, Mickleover Primary School and Loxley House in Nottingham. Even during his time with DCG, he helped with the construction work on buildings at Broomfield Hall campus.

Ellis said: “I studied at the College in 2009 and 2014 and it is great for me to be able to apply my learnt skills here as DCG has helped me significantly in my career. It is particularly exciting being involved in developing the IoT, as the new building will help the next generation of learners on their career journey.”

During the construction project, he hopes he can inspire others to consider joining the construction industry. He will give current students insights into his career path and will host site tours to help them understand elements of construction that they may be exploring in the classroom.

# HOW TO APPLY

Choosing a higher education programme is one of the most important decisions you will ever make. We offer full support and guidance to ensure you select the right option to help you achieve your goals. It means you can embark on your studies with confidence.

We will work with you to fulfil your potential, so it is important we have a conversation about your choice of programme and future plans as early as possible.

We advise you to gather as much information as you can about the options you are considering, including the entry criteria – see the relevant pages of this prospectus or our website for further details. We also recommend that you speak to a member of the subject team at one of our information events.

## Apply right now

There is no time like the present. Simply:

- log onto our website at [www.derby-college.ac.uk](http://www.derby-college.ac.uk)
- select your programme
- fill in your application form online

Once you have made an application, you will be invited for an interview. We will tell you more about the programme and will answer any questions you may have. We are particularly interested in your attitude, aptitude and motivation to study. You will be notified of the outcome of your application in writing.

If you have any queries – about your programme or other aspects of DCG life – at any point during the application process, please contact us on **0800 028 0289**.

## UCAS applications

The general DCG UCAS number is D38. You will find the UCAS codes for individual programmes on the relevant pages of this prospectus.



## UCAS tariff points

A number of our programmes ask for UCAS tariff points. The UCAS tariff allows you to see if your results meet the entry requirements for a particular programme. It covers a wide range of qualifications including A-level, Scottish Advanced Higher, Scottish Higher, and BTEC awards.

For more information, including a points calculator, please visit the UCAS website: [www.ucas.com](http://www.ucas.com)

## Changes to GCSE grades

New GCSE numeric grades – with 9 being the highest and 1 being the lowest – have now been introduced in England.

The government recognises grade 4 and above as a 'standard' pass in all subjects, representing a similar achievement to the old grade C or above. For English and Maths GCSE, it also categorises a grade 5 or above as a 'strong' pass.

Do not hesitate to contact us if you need to know more about entry requirements.

## No formal qualifications?

For many programmes, we welcome applicants who lack institutional qualifications. All such applicants will be interviewed and may be set an appropriate piece of work upon which a judgement will be made, taking into account their academic potential and relevant experience.



# OPENDAYS

## 2023-2024



### THE JOSEPH WRIGHT CENTRE

#### OPEN DAYS

WEDNESDAY 25<sup>TH</sup> OCTOBER 2023  
5.00pm - 7.00pm

WEDNESDAY 31<sup>ST</sup> JANUARY 2024  
5.00pm - 7.00pm

WEDNESDAY 28<sup>TH</sup> FEBRUARY 2024  
5.00pm - 7.00pm



### BROOMFIELD HALL

#### OPEN DAYS

WEDNESDAY 15<sup>TH</sup> NOVEMBER 2023  
5.00pm - 7.00pm

WEDNESDAY 14<sup>TH</sup> FEBRUARY 2024  
5.00pm - 7.00pm

WEDNESDAY 24<sup>TH</sup> APRIL 2024  
5.00pm - 7.00pm

SATURDAY 8<sup>TH</sup> JUNE 2024  
9.00am - 12.00pm

### THE ROUNDHOUSE

#### OPEN DAYS

THURSDAY 9<sup>TH</sup> NOVEMBER 2023  
5.00pm - 7.00pm

THURSDAY 8<sup>TH</sup> FEBRUARY 2024  
5.00pm - 7.00pm  
During Apprenticeship Week

THURSDAY 7<sup>TH</sup> MARCH 2024  
5.00pm - 7.00pm

ADULT OPEN EVENING  
THURSDAY 18<sup>TH</sup> APRIL 2024  
5.00pm - 7.00pm

ALL SITES OPEN EVENING  
THURSDAY 6<sup>TH</sup> JUNE 2024  
5.00pm - 7.00pm at The Roundhouse

## OTHER EVENTS AT DCG CREATIVE AND DIGITAL ACADEMY SHOWCASE

WEDNESDAY 19<sup>TH</sup> JUNE 2024 5.00pm - 8.00pm

Various events take place throughout the year that are slightly different from our regular open days.

**FOR UPDATES ON JOBS FAIRS, APPRENTICESHIP EVENTS AND MORE...**

...check out our social media pages      

or visit: [WWW.DERBY-COLLEGE.AC.UK/EVENTS](http://WWW.DERBY-COLLEGE.AC.UK/EVENTS)

**TO GET THE FULL DETAILS OF THE EVENT, PLEASE PRE-REGISTER YOUR CONTACT DETAILS ONLINE.**

**FOR MORE INFORMATION VISIT [DERBY-COLLEGE.AC.UK/EVENTS](http://DERBY-COLLEGE.AC.UK/EVENTS) OR CALL 0800 028 0289**

# ANIMAL MANAGEMENT

Domestic, farm, zoo and wild animals ... they all need the attention and care of highly skilled and dedicated professionals. DCG's specialist higher education courses will help you excel in a career which is truly worthwhile.

As a working estate, Broomfield Hall is the ideal setting for studying Animal Management. There is the chance to work with a broad range of animals, exotic species and rare breeds as you gain latest industry knowledge and practical experience.

Our animal unit is a superb resource where you will build hands-on skills while working in real-world situations. The approachable and enthusiastic staff in our Land-based Academy are tuned into the needs of the industry and have expertise in areas such as zoo keeping, domestic animal welfare and wildlife management.

We have forged an exciting partnership with Drayton Manor Zoo which offers you the chance of valuable work experience putting the theory into practice alongside established zoo keepers. Learning more about Drayton Manor's high-quality conservation and breeding programmes will broaden your knowledge and career horizons. In addition, we have joined forces with Chester Zoo – the UK's most visited wildlife charity – to support new apprenticeship routes into animal management and conservation careers.

Progression opportunities for our successful Foundation Degree students include a top-up degree so that you can complete a highly regarded BSc (Hons) degree with just one year of full-time study or two years of part-time study.



The Foundation Degree Animal Management (FdSc); Foundation Degree Animal Management (Zoo and Wildlife) (FdSc); BSc (Hons) Animal Management (Top Up); and BSc (Hons) Animal Management (Zoo and Wildlife) (Top Up) are delivered in partnership with and awarded by the University of Derby. Students will receive a University of Derby Certificate and will have the opportunity to join the University's Alumni Network on completion of their programme.

In partnership with



# Access to Higher Education Diploma: Animal Science

Level 3

Number of years: 1

Location: Broomfield Hall

**Would you like to transform your interest in animals into a rewarding and worthwhile career? This exciting Access Diploma could provide the perfect stepping stone for animal enthusiasts of all ages and backgrounds.**

## WHO IS THIS COURSE FOR?

Are you interested in degree level study but worried because you lack traditional qualifications? Have you been out of education for a while? Do you need to rebuild your confidence to achieve your ambitions?

This new Access course enables you to ease yourself back into studying – all in a friendly and supportive environment. It is specially designed to support adult students with their progression to a Foundation Degree, a job or an apprenticeship in the animal science industry. The programme is ideal for those seeking a career change or those looking to further their education to secure more senior roles in animal care.

The Diploma has a strong vocational focus and you will cover both theoretical and practical aspects of animal science. You will study at Broomfield Hall amid fantastic rural grounds where you can make the most of an excellent animal care centre. Such has been the impact of this new programme that Broomfield Hall was shortlisted for a special award by the AIM Qualifications and Assessment Group in 2023. It reached the final of the Access to Higher Education Centre of the Year category.

If you have not already achieved GCSE English and Maths at grades C/4 or above – or Functional Skills at Level 2 – this will form part of your programme of study.

## ENTRY REQUIREMENTS

You are required to hold GCSE English and Maths at grade 3/D or Level 1 Functional Skills.

You should also demonstrate a strong interest in the animal management industry. You should have undertaken a minimum of two weeks' work placement before starting the programme.

All applicants will be invited to an interview to discuss the programme.

## WHAT WILL YOU LEARN?

Modules include but are not limited to:

- Animal evolution
- Biodiversity
- Health and disease
- Animal nutrition
- Safe working practices
- Study and research skills
- Statistics
- Cells and tissues
- Organs and systems
- Mammalian reproduction
- Accommodation
- Aquatic husbandry
- Work experience (100 hours to be completed throughout the course)
- GCSE/Functional Skills English and Maths (where applicable)

## HOW WILL YOU LEARN?

The course entails attendance for three days a week, with one day to focus on work experience.

You will be taught via face-to-face delivery at Broomfield Hall. Lessons will incorporate both theory and practical elements to include presentations, hands-on experiences and group and independent work. A range of guest speakers and relevant industry-related trips will feature in your studies.

The programme is delivered by a team of well qualified, enthusiastic and experienced tutors who fully understand the needs of Access students and offer extensive support and guidance to keep your progress on track. You will have timetabled tutorial sessions and 1-1 support from a personal tutor. We also provide access to an academic studies coach to assist you throughout your learning journey as well as an extensive range of resources across the campus.

## WHAT WILL YOU NEED TO BRING WITH YOU?

Entrance costs to various visitor attractions, such as zoos, will be required at the time of each visit. The anticipated total costs will be approximately £45 for the duration of the course.

You will also be required to purchase a Derby College Group polo shirt for practicals, plus a lab coat and steel toe cap boots (at a cost of circa £75).

A laptop would be beneficial to your studies.

You can be funded for the course through EFA funding if you are 18-23 years old and have not completed a previous Level 3 qualification. Alternatively you can opt for an Adult Learner Loan if you have completed a previous Level 3 qualification or are aged 24+.

## HOW WILL YOU BE ASSESSED?

Assessments include a range of methods such as written essays and reports, practical handling assessments, laboratory work, posters and presentations.

## WHERE NEXT?

You can progress to a Foundation Degree at DCG or elsewhere. DCG offers the FdSc Animal Management or the FdSc Animal Management (Zoo and Wildlife) on both a full-time and part-time basis. See pages 24-25. The Access Diploma can also pave the way to a job or an apprenticeship in the animal science industry.

This course will run with a minimum of six students.

# Foundation Degree Animal Management (FdSc)

Level 5

Number of years: **2 (full time) or 4 (part time)**

Location: **Broomfield Hall**

UCAS code: **D300**

**If you have a real passion for working with animals, you will discover a wide choice of occupations in what is a thriving and varied sector. Our Foundation Degree gives you a solid introduction to all aspects of animal management.**

## WHO IS THIS COURSE FOR?

This Foundation Degree is designed to give you the right aptitude and attitude to work within the animal management sector. You will develop your hands-on skills and theoretical knowledge through a fascinating range of academic study, practical classes and industrial visits.

Available on both a full-time and part-time basis, the course consists of 12 modules which reflect the diverse nature of animal management. The qualification is awarded by the University of Derby.

## ENTRY REQUIREMENTS

You need to be aged 18 or over at the beginning of the course and should have 64 UCAS points in a relevant subject area.

You will also need four GCSEs at grades 9-4 (A\*-C), or the equivalent, to include English, Maths and Science.

You will be invited to an interview to discuss your qualifications, experience and any other related issues. All applicants are subject to approval from the University of Derby.

## WHAT WILL YOU LEARN?

### Stage 1 modules:

- Principles of Animal Husbandry (20 credits)
- Principles of Animal Science (20 credits)
- Introduction to Animal Health and Welfare (20 credits)
- Introduction to Animal Anatomy and Physiology (20 credits)
- Introduction to Work Experience in the Animal Management Sector (20 credits)
- Essential Study Skills for Lifelong Learning (0 credits)

### Stage 2 modules:

- Applied Animal Nutrition (20 credits)
- Natural History of Exotic Mammals (20 credits)
- Planning and Managing Animal Breeding Programmes (20 credits)
- Ethology of Domestic and Captive Animals (20 credits)
- Continuing Work Experience in the Animal Management Sector (20 credits)
- Research Methods and Scientific Communication (20 credits)

Please see our website for full module descriptions.

## HOW WILL YOU LEARN?

Modules will be delivered through engaging lectures and practical studies in our laboratories and on-site animal unit at Broomfield Hall. Your learning will be enhanced through field trips to enable you to apply theory to practice.

You will also take part in relevant work-based learning equivalent to one day per week. Support in identifying appropriate work placement opportunities will be provided.

Your learning will be enhanced by our highly qualified teaching team who have a wealth of academic and professional experience in many specialist areas. Guest speakers will also ensure that you receive the most up-to-date professional knowledge.

For full-time students, the programme entails 15 hours of taught material each week, with a minimum of 15 hours of expected self-study per week. The part-time route includes eight hours of taught material each week, with a minimum of eight hours of expected self-study per week.

The core higher education academic year will be for a duration of 33 weeks for the purposes of maintenance loans. You will receive a proportion of this time as direct delivery, with any additional time – as deemed appropriate by the programme team and the awarding body – for activities such as induction, tutorials, research, directed study and reading weeks. The direct delivery time for this course will be 26 weeks.

## WHAT WILL YOU NEED TO BRING WITH YOU?

You are required to meet the entrance costs to various visitor attractions, such as zoos, to support your studies. These would need to be paid at the time of the event. The anticipated costs will be approximately £25 for Stage 1 and £40 for Stage 2.

You will also need to purchase a Derby College Group polo shirt for practicals and a lab coat and steel toe-cap boots at a cost of around £75.

## HOW WILL YOU BE ASSESSED?

Assessments entail a variety of methods, including assignments, practical work, reports, group presentations and poster presentations. All assessment methods have been designed to focus on skills specific to the animal management industry while incorporating key transferable skills.

## WHERE NEXT?

Upon successful completion of this course, you will be equipped with the knowledge and skills to pursue a new career – or advance an existing career – in a wide variety of animal management fields. You will have developed excellent practical skills and the necessary industrial experience to work with a wide variety of animal species.

This course also provides an ideal platform to top-up your qualification to an Honours Degree covering subjects such as Human-Animal Interactions, Animal Training, Animal Welfare Science and Business Enterprise. See overleaf to find out more about the BSc (Hons) options offered by DCG.

This course will run with a minimum of six students. In 2023-24 we enrolled 24 students on this programme.



# Foundation Degree Animal Management (Zoo and Wildlife) (FdSc)

Level 5

Number of years: **2 (full time) or 4 (part time)**

Location: **Broomfield Hall**

UCAS code: **D300**

**Keen to specialise in zoo management or wildlife conservation? This exciting Foundation Degree gives you the chance to focus on the aspects of animal management that interest you most.**

## WHO IS THIS COURSE FOR?

If you want to work within the zoo and wildlife conservation sector, our specialist Foundation Degree – available on both a full-time and part-time basis – will give you the aptitude and attitude you need for a wide choice of occupations in what is a thriving and varied sector.

You will develop hands-on skills and theoretical knowledge through a fascinating range of academic study, practical classes, national and international trips, and industrial visits.

The qualification is awarded by the University of Derby.

## ENTRY REQUIREMENTS

You need to be aged 18 or over at the beginning of the course and should have 64 UCAS points in a relevant subject area.

You will also need four GCSEs at grades 9-4 (A\*-C), or the equivalent, to include English, Maths and Science.

All applicants will be invited to an interview to discuss their qualifications, experience and any other related issues.

All applicants are subject to approval from the University of Derby.

## WHAT WILL YOU LEARN?

### Stage 1 modules:

- Frontiers in Zoo Biology (20 credits)
- Principles of Ecology and Biodiversity (20 credits)
- Principles of Animal Biology (20 credits)
- Introduction to Animal Health and Welfare (20 credits)
- Introduction to Animal Anatomy and Physiology (20 credits)
- Introduction to Work Experience in the Animal Management Sector (20 credits)
- Essential Study Skills for Lifelong Learning (0 credits)

### Stage 2 modules:

- Zoo Animal Husbandry (20 credits)
- Applied Animal Nutrition (20 credits)
- Captive Breeding for Species Conservation Programmes (20 credits)
- Animal Psychology and Ethology (20 credits)
- Continuing Work Experience in the Animal Management Sector (20 credits)
- Research Methods and Scientific Communication (20 credits)

Please see our website for full module descriptions.

## HOW WILL YOU LEARN?

Modules will be delivered through engaging lectures and practical studies in our laboratories and on-site animal unit at Broomfield Hall as well as within local zoological collections. Your learning will be enhanced through field trips to enable you to apply theory to practice.

You will also take part in relevant work-based learning equivalent to one day per week. Support in identifying appropriate work placement opportunities will be provided.

Your learning will be enhanced by DCG's highly qualified teaching team who have a wealth of academic and professional experience in many specialist areas. Guest speakers will also ensure that you receive the most up-to-date professional experience and knowledge.

The full-time programme includes 15 hours of taught material each week, with a minimum of eight hours of expected self-study per week. The programme can also be studied part time, with attendance at College on one day a week.

The core higher education academic year will be for a duration of 33 weeks for the purposes of maintenance loans. You will receive a proportion of this time as direct delivery, with any additional time – as deemed appropriate by the programme team and the awarding body – for activities such as induction, tutorials, research, directed study and reading weeks. The direct delivery time for this course will be 26 weeks.

## WHAT WILL YOU NEED TO BRING WITH YOU?

You are required to meet the entrance costs to various visitor attractions, such as zoos, to support your studies. These would need to be paid at the time of the event. The anticipated costs will be approximately £25 at Stage 1 and £40 at Stage 2.

You will also be required to purchase a Derby College Group polo shirt for practicals, plus a lab coat and steel toe-cap boots at a cost of around £75.

## HOW WILL YOU BE ASSESSED?

Assessment entails a variety of methods, including assignments, practical work, reports, group presentations and poster presentations. All assessment methods have been designed to focus on skills specific to the zoo and wildlife management industry while incorporating key transferable skills.

## WHERE NEXT?

Upon successful completion of this course, you will be equipped with the knowledge and skills to pursue a new career or advance an existing one in a wide variety of zoo and wildlife conservation management fields. You will graduate with excellent practical skills and the necessary industrial experience with a wide variety of animal species.

Your studies will also provide an ideal platform to top-up to an Honours Degree course specialising in diverse subjects such as Anthrozoology and Wild Animal Veterinary Science. You do not even have to leave DCG to take your academic ambitions to the next level: we offer a top-up degree which you can complete with one year of full-time study or two years of part-time study. In addition, your Foundation Degree could lead to zoo management training courses and setting up a successful zoological or educational business enterprise.

This course will run with a minimum of six students. In 2023-24 we enrolled 24 students on this programme.

# BSc (Hons) Animal Management (Top Up)

Level 6

Number of years: 1 (full time) or 2 (part time)

Location: Broomfield Hall

UCAS code: D328

**Take your ambitions in animal management to the next level by topping up your existing qualifications. By gaining a BSc (Hons) degree, you can open even more doors to a fulfilling future in what is a hugely varied sector.**

## WHO IS THIS COURSE FOR?

This top-up degree is ideal for existing and aspiring animal management professionals who want to build on the skills and knowledge they have developed during HND or Foundation Degree studies. It will place you in a prime position to pursue a new career, consider self-employment or progress in your existing role.

Offered on both a one-year full-time and two-year part-time basis, the BSc (Hons) is an exciting course reflecting the diverse nature of animal management. It covers issues such as animal welfare science, animal training and how to run a successful animal-related enterprise.

You will gain excellent practical skills and relevant industrial experience working with a wide variety of animal species. You will also develop your abilities in conducting independent research by pursuing a dissertation project on a theme of your choice.

The qualification is awarded by the University of Derby.

## ENTRY REQUIREMENTS

You need to be aged 18 or over at the beginning of the course and should have attained a Merit grade (2:2) or higher from a Foundation Degree or HND in a relevant subject.

You will also need four GCSEs at grades 9-4 (A\*-C), or the equivalent, to include English, Maths and Science.

You will be invited to an interview to discuss your qualifications, experience and any other related issues.

All applicants are subject to approval from the University of Derby.

## WHAT WILL YOU LEARN?

Modules are:

- Animal Interactions, Law and Ethics (20 credits)
- Recent Developments in Animal Welfare Science (20 credits)
- Creating and Managing Animal Training Programmes (20 credits)
- Setting up a Successful Animal Business Enterprise (20 credits)
- Independent Animal Research Project (40 credits)

Please see our website for full module descriptions.

## HOW WILL YOU LEARN?

The modules are delivered through engaging lectures and practical studies in our laboratories and on-site animal unit at Broomfield Hall.

Your learning will be supported by our highly qualified teaching team who have a wealth of academic and professional experience in many specialist areas. Guest speakers will also ensure that you receive the most up-to-date professional experience and knowledge. This will be enhanced further through field trips (mandatory and voluntary) to enable you to apply theory to practice.

The full-time course includes 15 hours of taught material each week with a minimum of 15 hours of expected self-study. The part-time route involves one day per week, with eight hours of self-directed study expected.

The core higher education academic year will be for a duration of 33 weeks for the purposes of maintenance loans. You will receive a proportion of this time as direct delivery, with any additional time – as deemed appropriate by the programme team and the awarding body – for activities such as induction, tutorials, research, directed study and reading weeks. The direct delivery time for this course will be 28 weeks.

## WHAT WILL YOU NEED TO BRING WITH YOU?

To support your studies there are trips to various visitor attractions, such as zoos, and entrance costs will be required at the time of each visit. The anticipated total costs will be approximately £45 for two external visits for the duration of the course.

You will also be required to purchase a Derby College Group polo shirt for assessments, plus a lab coat and steel toe-cap boots for practicals. These can be purchased at enrolment.

A laptop and note-taking materials will be needed for lectures and completing assessments.

## HOW WILL YOU BE ASSESSED?

Assessment entails a variety of methods including assignments, practical work, reports, group presentations and poster presentations. All formative and summative assessment methods have been designed to focus on skills specific to the animal management industry while incorporating key transferable skills.

## WHERE NEXT?

On successful completion of your studies, you will be equipped to pursue a new career or advance an existing career in a broad range of animal management fields.

The programme will also give you experience of independent research and an opportunity to develop a business proposal should you wish to embark on an entrepreneurial endeavour or become self-employed.

You will also have an ideal platform to study Level 7 (Masters) courses specialising in subjects such as Conservation, Animal Management or Animal Behaviour.

This course will run with a minimum of six students. In 2023-24 we enrolled 12 students on this programme.

# BSc (Hons) Animal Management (Zoo and Wildlife) (Top Up)

Level 6

Number of years: 1 (full time) and 2 (part time)

Location: Broomfield Hall

UCAS code: D3280

**Build on the skills you have developed on a HND or Foundation Degree and top up your qualification to a full Honours Degree. With this BSc (Hons) under your belt, you will be in an excellent position for career advancement.**

## WHO IS THIS COURSE FOR?

The zoo and wildlife sectors of the animal management industry are developing rapidly, with many exciting opportunities for dynamic and dedicated professionals. With an Honours Degree, you could advance to senior posts more rapidly, take your career in new directions or consider self-employment.

Offered on both a full-time and part-time basis, this top-up course will help you develop further practical skills and relevant industrial experience with a wide variety of animal species. You will also have the chance to conduct independent research into an animal management theme of your choice.

Upon successful completion of this programme, you will achieve a BSc (Hons) qualification from the University of Derby.

## ENTRY REQUIREMENTS

You need to be aged 18 or over at the beginning of the course and should have attained a Merit grade (2:2) or higher from a Foundation Degree or HND in a relevant subject.

You will also need four GCSEs at grades 9-4 (A\*-C), or the equivalent, to include English, Maths and Science.

You will be invited to an interview to discuss your qualifications, experience and any other related issues. All applicants are subject to approval from the University of Derby.

## WHAT WILL YOU LEARN?

The course consists of five modules designed to reflect the diverse nature of zoo and wildlife management. These are:

- Animal Interactions, Law and Ethics (20 credits)
- Recent Developments in Animal Welfare Science (20 credits)
- Wild Animal Veterinary Sciences (20 credits)
- Setting up a Successful Animal Business Enterprise (20 credits)
- Independent Animal Research Project (40 credits)

Please see our website for full module descriptions.

## HOW WILL YOU LEARN?

You will benefit from engaging lectures and practical studies in our laboratories and on-site animal unit at Broomfield Hall. Our highly qualified teaching team has a wealth of academic and professional experience in many specialist areas. Guest speakers will also ensure that you receive the most up-to-date professional experience and knowledge. Your learning will be enhanced further through field trips (mandatory and voluntary) to enable you to apply theory to practice.

The full-time programme includes 15 hours of taught material each week, with a minimum of 15 hours of expected self-study. The part-time route entails one day per week, with eight hours of self-directed study expected.

The core higher education academic year will be for a duration of 33 weeks for the purposes of maintenance loans. You will receive a proportion of this time as direct delivery, with any additional time – as deemed appropriate by the programme team and the awarding body – for activities such as induction, tutorials, research, directed study and reading weeks. The direct delivery time for this course will be 28 weeks.

## WHAT WILL YOU NEED TO BRING WITH YOU?

There will be entrance costs to various visitor attractions, such as zoos, to support your studies and these will be required at the time of each visit. The anticipated total costs will be approximately £40 for two external visits for the duration of the course.

You will be required to purchase a Derby College Group polo shirt for assessments, plus a lab coat and steel toe-cap boots for practicals. These can be purchased at enrolment.

A laptop and note-taking materials will be needed for lectures and completing assessments.

## HOW WILL YOU BE ASSESSED?

Assessments use a variety of methods including assignments, practical work, reports, group presentations and poster presentations. All formative and summative assessment methods have been designed to focus on skills specific to the zoo and wildlife management industry while incorporating key transferable skills.

## WHERE NEXT?

Achieving the Honours Degree will enable you to progress your zoo and wildlife management career at a more senior level. It also gives you the opportunity to develop a business proposal if you are interested in embarking on an entrepreneurial endeavour or becoming self-employed.

In addition, the BSc (Hons) Animal Management (Zoo and Wildlife) provides an ideal platform for you to study Masters level programmes specialising in a wide variety of subjects such as Conservation, Anthrozoology or Animal Behaviour. This includes the MSc Conservation Biology at the University of Derby.

This course will run with a minimum of six students. In 2023-24 we enrolled 12 students on this programme.

# BUSINESS, LEADERSHIP AND MANAGEMENT

Derby College Group specialises in nurturing the business managers of the future – leaders who can help improve their organisation's productivity, performance and competitiveness. Our Business Academy can help you go further, faster.

Our aim is to enhance your entrepreneurial and creative thinking, enabling you to see possibilities rather than problems. From the smallest charity to the largest corporation, every organisation is a business of some kind, so your studies will equip you with skills and knowledge that can be readily transferred to all aspects of working life.

Our highly qualified industry-experienced teaching staff will ensure you make the most of your learning opportunities. The Business Academy team prides itself on teaching 'beyond the qualification' – with strong employer engagement and an excellent network of contacts across many different sectors.

Your learning will therefore be enriched by specialist guest lectures, challenging 'real-world' projects that give you insights into the very latest business thinking, and industry visits covering themes such as workplace culture, project management and strategic vision.



# BTEC Higher National Certificate (HNC) in Business

Level 4

Number of years: **2 (part time)**

Location: **The Roundhouse**

**Our new HNC will equip you to become a professional, self-reflecting, resilient individual who is able to adapt to meet the demands of employers in the business sector, from small companies to large corporate organisations.**

## WHO IS THIS COURSE FOR?

This Higher National Certificate (HNC) is suitable for all students wishing to study a part-time higher education course in Business, including those who are employed, self-employed or have employer sponsorship.

A Level 4 qualification made up of 120 credits, the course is studied over two years and is ideal for anyone looking to work and advance their career in business.

It enables you to build the skills, knowledge and understanding you need to achieve high performance in the business environment. It assists you to develop an enquiring mind, critical thinking and problem-solving abilities, so you are confident working across different business functions. You will also improve your employability skills and competencies for career success.

Students who complete this course will be capable of leading, managing and responding to change and tackling a range of complex business situations.

## ENTRY REQUIREMENTS

All applicants must be at least 18 years old and will be invited to an interview to discuss their qualifications, experience and any other related issues.

For those who have recently been in education, the entry profile is likely to include one of the following:

- A BTEC Extended Diploma in Business or a related subject area
- At least three A-levels or AS Levels in related subjects
- Other related Level 3 qualifications
- An Access to Higher Education Diploma from an approved further education institution
- Relevant work experience
- An international equivalent to the above qualifications

Applicants will also need at least four GCSEs at grade 9-4 (A\*-C) to include English and Maths or the equivalent.

Applicants aged over 21 years at the start of the course and who have been out of education for at least three years are classed as 'mature' students. Their prior qualifications and/or work experience will be reviewed and discussed at interview to consider if their individual profile shows they have the potential to achieve the qualification.

## WHAT WILL YOU LEARN?

This HNC requires 120 credits across eight units.

**Core Units** (mandatory - each worth 15 credits)

- Business and the Business Environment
- Marketing Processes and Planning
- Human Resource Management
- Leadership and Management
- Accounting Principles
- Managing a Successful Business Project (Pearson-set)

There are also two optional units (each worth 15 credits) which DCG will choose from the list below:

- Business Law
- Entrepreneurial Ventures
- Digital Business in Practice
- Professional Identity and Practice

## HOW WILL YOU LEARN?

The hours allocated per week will include taught hours with the teacher and, as with any higher education course, you are also required to undertake independent learning outside the class.

Each module will take a unique approach that best supports you in achieving the learning and assessments. You will engage with your peers and teachers via face-to-face classes and, if required, a variety of online lectures, discussions, tutorials and activities. You will have access to a Virtual Learning Environment (VLE) and Microsoft Teams where a range of resources and activities will be provided.

The core higher education academic year will be for a duration of 33 weeks for the purposes of maintenance loans. You will receive a proportion of this time as direct delivery, with any additional time – as deemed appropriate by the programme team and the awarding body – for activities such as induction, tutorials, research, directed study and reading weeks. The direct delivery time for this course will be 33 weeks.

## WHAT WILL YOU NEED TO BRING WITH YOU?

Many students find it beneficial to bring their own laptop or tablet to make notes during lessons. Others make notes using a method suitable to their individual needs. DCG also has laptops that students can use on site.

## HOW WILL YOU BE ASSESSED?

Your knowledge and understanding for all modules will be assessed through a variety of methods. These include written work such as assignments, group work and presentations, giving a presentation with assessor questioning, making a PowerPoint presentation, creating academic posters, displays or leaflets, or keeping a reflective journal. All assignment activity will support you in developing skills in academic writing, verbal presentations, teamwork and analysis.

A variety of forms of assessment evidence will be used, suited to the type of learning outcomes being assessed. Some units, for example, require a practical demonstration of skills while others require students to carry out their own research and analysis, working independently or as part of a team.

DCG offers a comprehensive development programme to support your progression in these areas. You will have access to a Higher Education Academic Coach and supportive tutorials in addition to your classes.

## WHERE NEXT?

Having a BTEC HNC in Business allows students to specialise by committing to specific career paths and progression routes to degree-level study.

On successful completion of your studies, you can develop your career in the business sector through entering employment in job roles such as business team leader/manager; business development manager; business advisor; office manager; human resource manager/consultant; assistant marketing manager; finance officer; accounts assistant; contract officer; or supply chain executive.

Alternatively you may choose to continue in your existing employment and seek promotion opportunities.

Successful completion of the HNC is equivalent to completing the first year of a Business-related honours degree at a UK university. The qualification is recognised as meeting admission requirements to many relevant business-related courses such as the:

- BTEC Level 5 Higher National Diploma (HND)
- Relevant degree courses at Year 1 or Year 2 (check the entry requirements for degree programmes at specific universities.)

# Higher Apprenticeship – Operations or Departmental Manager

Level 5

Number of years: 2

Location: **Workplace**

**Help your organisation to achieve its strategic objectives and enhance your own career prospects at the same time: this Higher Apprenticeship will bring an extra dimension to your CV.**

## WHO IS THIS COURSE FOR?

An excellent choice for professionals who manage teams and projects, this Higher Apprenticeship equips you to achieve operational or departmental goals in line with your organisation's overall strategy.

It is suitable for those working in – or aspiring to – roles such as operations, regional, divisional, department or specialist manager. Working in the private, public or third sector and in any size of organisation, their specific responsibilities and job titles may vary, but the knowledge, skills and behaviours they need will be the same.

The Higher Apprenticeship enables you to succeed in meeting key responsibilities including creating and delivering operational plans, managing projects, leading and managing teams, managing change, financial and resource management, talent management, coaching and mentoring.

## ENTRY REQUIREMENTS

The entry requirement for this apprenticeship will be decided by each employer but may typically be five GCSEs at grade 4 and above.

## WHAT WILL YOU LEARN?

- Organisational Performance – delivering results
- Interpersonal Excellence – managing people and developing relationships
- Personal Effectiveness – managing self

You will also develop behaviours which are important to employers such as a professional attitude and a willingness to take responsibility.

## HOW WILL YOU LEARN?

The Higher Apprenticeship involves on-the-job learning in the workplace. You will have 20% off-the-job time to complete your studies.

## WHAT WILL YOU NEED TO BRING WITH YOU?

You will need to have all personal protective equipment (PPE) required to undertake your role legally and safely.

## HOW WILL YOU BE ASSESSED?

You will work with your assessor to ensure that you have all the knowledge and behaviours to complete the End Point Assessment which will include:

- assessment of a portfolio of evidence
- a project proposal, presentation and questions
- a professional discussion, with questions and answers

## WHERE NEXT?

You could progress to a Level 6 programme.





# ENGINEERING

From a campus which played a key role in industrial history, DCG fosters the engineering pioneers of tomorrow. Underpinned by academic rigour and strong employer partnerships, our higher education opportunities will power up your career.

Our Engineering Academy is based in what was the world's first railway roundhouse, now converted into an award-winning vocational skills centre packed with industry-standard scientific and mechanical equipment – from rapid prototyping to robotics, CAD to electronics. Latest developments include our £1.75m Technology Hub, with mechatronics equipment mirroring the high-tech artificial intelligence manufacturing processes commonly used in a wide range of industry sectors. This is an excellent time to advance your career in engineering. The sector is growing at a considerable rate, particularly with the development of new technologies which in turn has led to skill shortages and demand for high performing engineers. You will also have the benefit of studying in a city populated with world-leading employers and their high-quality supply chains.



DCG has close links with engineering giants such as Rolls-Royce plc as well as rail-related firms including EMR, Loram, Porterbrook and Alstom. Such strong employer engagement enhances the quality of our programmes. With Derby named as the home of the Great British Railways HQ, the city's profile as the setting for Europe's largest and most diverse rail cluster can only grow – bringing exciting career opportunities for students.

Our highly flexible study options include not only full-time routes but also day release and part-time routes which allow you to balance your learning with your work commitments and which are an attractive option for employers keen to support staff development.

The portfolio features a Foundation Degree in Integrated Engineering and BEng (Hons) Engineering (Top Up) – validated by Sheffield Hallam University – designed to give you specialist knowledge across multiple engineering disciplines to broaden your career scope.

We also support Higher and Degree Apprenticeships for those professionals who want to advance their career prospects through an exciting combination of on-the-job learning and supported studies at the Roundhouse.

In addition our HNCs have been officially approved as Higher Technical Qualifications (HTQs) which shows that they meet employer-set standards.

**Sheffield  
Hallam  
University**



# Foundation Degree Integrated Engineering (FdEng)

Level 5

Number of years: 2

Location: **The Roundhouse**

UCAS code: **H110**

**Are you looking for a programme which offers a solid foundation in general engineering science and mathematics, along with the chance to specialise in mechanical, electrical or manufacturing engineering? Then this Foundation Degree is a smart choice.**

## WHO IS THIS COURSE FOR?

Validated by the Institute of Mechanical Engineers and accredited by the Institution of Engineering and Technology (IET), this two-year Foundation Degree is designed with local employers who need technicians offering specialist knowledge and an appreciation of the challenges across various engineering disciplines.

Run in partnership with Sheffield Hallam University, the programme is an excellent stepping-stone for those keen to progress from Level 3 courses. Most students are employed in a junior engineering role. The course is generally offered on a day-release basis – one day per week – for those already in the workplace, either as a standalone qualification or as part of a Higher Apprenticeship.

The Foundation Degree helps students build on their existing capabilities by developing their academic and problem-solving skills in a vocational context. It also leads, following a further year's study, to an Honours Degree.

## ENTRY REQUIREMENTS

All applicants will be invited to an interview to discuss their qualifications, experience and pathway options. It is advisable to be employed and you should have permission from your employer to undertake this course.

You should be aged 18 or over at the beginning of the course and should have at least one of the following:

- One A-level pass in a relevant scientific/technology subject (two AS-level passes are considered equivalent to one A-level pass)
- A Level 3 Certificate or Diploma in a science or technology-based subject, preferably including Further Maths
- A pass in the Access to HE Diploma in Engineering course, or other suitable science/technology-based Foundation or Access programme containing an appropriate level of mathematics, with an overall average mark of at least 40%
- A qualification deemed to be equivalent to any of the above

You will also need GCSE English and Maths at grade 9-4 (A\*-C).

Students with a BTEC Higher National Certificate – or an equivalent qualification in an appropriate engineering discipline – may be eligible to join the second year of the Foundation Degree.

All applications are subject to approval by Sheffield Hallam University.

## WHAT WILL YOU LEARN?

The Foundation Degree has three pathways: Mechanical, Electrical and Manufacturing. It is based upon 12 modules, each worth 20 credits: 240 credits are required to achieve the qualification.

### Year 1 core modules (all pathways)

- Computing for Engineers
- Maths and Engineering Science
- Engineering Principles
- Business and Project Management
- Investigative Project I

### Electrical Pathway

#### Year 1

- All core modules
- Analogue and Digital Electronics I

#### Year 2

- Investigative Project II
- Analogue and Digital Electronics II
- Machines and Drives
- Maths for Control
- Microprocessor Systems
- Introduction to PLCs

### Manufacturing Pathway

#### Year 1

- All core modules
- Manufacturing Processes

#### Year 2

- Investigative Project II
- Engineering Design and Manufacture
- Maths for Materials and Design
- Process Improvement and Lean Operations
- Production and Operations Management
- Materials Engineering

### Mechanical Pathway

#### Year 1

- All core modules
- Manufacturing Processes

#### Year 2

- Investigative Project II
- Engineering Design and Manufacture
- Maths for Materials and Design
- Mechanics of Solids and Dynamics
- Thermofluids Engineering
- Materials Engineering

## HOW WILL YOU LEARN?

Delivery takes place at the Roundhouse and students are generally on site for nine hours of class time for 36 weeks per year.

## HOW WILL YOU BE ASSESSED?

Module assessment is generally through a blend of coursework and examinations. A common theme of high-quality presentation, referenced research and in-depth analysis runs through all forms of assessment, be it an examination, presentation, piece of coursework or laboratory report.

The intensity of the programme means that you must be able to make the commitment to study extensively outside of normal College hours.

## WHERE NEXT?

You could further your career in areas like developing and maintaining manufacturing process plant, designing and building mechanical or electrical components, modelling complex engineering systems or developing systems for process improvement.

# BEng (Hons) Engineering (Top Up)

Level 6

Number of years: 1

Location: **The Roundhouse**

UCAS code: **H110**

**Complete your learning journey and achieve a full Honours Degree in Engineering with this one-year BEng top-up programme. This well-regarded qualification will help ensure your CV stands out when you want to take your career to the next level.**

## WHO IS THIS COURSE FOR?

This programme enables you to top up your existing qualification – such as a Foundation Degree or an equivalent Level 5 qualification – to a full Honours Degree.

DCG offers three programmes to choose from:

- BEng (Hons) Electrical Engineering (Top Up)
- BEng (Hons) Manufacturing Engineering (Top Up)
- BEng (Hons) Mechanical Engineering (Top Up)

The qualification is awarded by Sheffield Hallam University and accredited by the Institution of Engineering and Technology (IET).

## ENTRY REQUIREMENTS

All applicants will be invited to an interview to discuss their qualifications, experience and any other related issues. You need to be employed and to have permission from your employer to undertake this course.

You should have one of the following:

- The FdEng Integrated Engineering awarded by Sheffield Hallam University
- A Foundation Degree from another university in a relevant field
- A HND in an engineering field at Merit level

You will also need GCSE English and Maths grades 9-4/A\*-C.

All applicants are subject to approval by Sheffield Hallam University.

## SHEFFIELD HALLAM UNIVERSITY

All offers made by Sheffield Hallam University will be subject to:

- successful completion of the Foundation Degree programme, including satisfying performance attainment requirements where specified
- submission of a satisfactory personal statement and reference
- meeting the University's literacy and numeracy requirements
- satisfying any additional specific course requirements for entry to the designated progression route, which may include successful attendance at an interview or selection event, successful completion of associated bridging studies, or any non-academic conditions

Offers are made subject to the availability of courses and the University's terms and conditions:

[students.shu.ac.uk/regulations](http://students.shu.ac.uk/regulations)

## WHAT WILL YOU LEARN?

The course is delivered as a series of modules that cover the major themes in engineering. The lecturer for each module has relevant industry and academic experience.

### BEng (Hons) Electrical Engineering (Top-Up)

- Electronic Engineering Application
- Electrical Power Systems
- Automation and Robotics
- Project and Project Management
- Control Systems Engineering

### BEng (Hons) Manufacturing Engineering (Top-Up)

- Design Evaluation Methodology
- Composite Materials
- Further Manufacturing Techniques and Materials
- Automation and Robotics
- Project and Project Management

### BEng (Hons) Mechanical Engineering (Top-Up)

- Further Thermodynamics and Fluid Mechanics
- Applied Structural Mechanics and Finite Element Analysis
- Design Evaluation Methodology
- Systems Engineering
- Project and Project Management

## HOW WILL YOU LEARN?

This programme is delivered in the award-winning vocational skills centre at the Roundhouse. Each module will constitute 1.5 hours per week for 36 weeks per year. As well as nine hours spent in College, it is expected that you will equal this time working outside the College on assessments, research, revision and other learning activities.

## HOW WILL YOU BE ASSESSED?

Each module has a different approach to assessment, optimised for the materials studied and skills acquired. There is a common theme of high-quality presentation, referenced research and in-depth analysis that runs through all assessments, be they examinations, seminars, coursework or laboratory reports.

The intensity of the programme means that you must be able to make the commitment to study extensively outside of normal College hours.

## WHERE NEXT?

This course is strongly academic and aims to develop engineers who have both academic and problem-solving skills in combination with their work-based vocational skills. It fully meets the academic requirement for registration as an Incorporated Engineer and partly meets the academic requirement for Chartered Engineer status.

Having completed the BEng (Hons), you could look to advance your career in the development and maintenance of manufacturing process plant, the design and build of mechanical or electrical components, or the modelling of complex engineering systems to develop improved systems. You could also consider progression to masters-level study, such as the MSc in Engineering offered by Sheffield Hallam University.

This course will run with a minimum of ten students enrolled on each pathway.

# Higher National Certificate (HNC) in Electrical and Electronic or Mechanical Engineering (HTQ)

Level 4

Number of years: 2

Location: **The Roundhouse**



All engineering companies demand well qualified, versatile and adaptable staff. Our two-year part-time HNCs – which have been approved as Higher Technical Qualifications (HTQs) – are an excellent way for you to develop the skills and knowledge that today's employers expect.

## WHO IS THIS COURSE FOR?

If you want to progress in a stimulating and rewarding career in the ever-changing environment of engineering, a part-time HNC with DCG provides a flexible and convenient way to realise your ambitions.

We provide an advanced work-related curriculum focussing on professional and technical education. You can choose to specialise in Electrical and Electronic or Mechanical Engineering and you can study modules as standalone options or as part of a Level 4 apprenticeship. You will be able to complement your own professional experience with a strong grasp of the underlying principles that support successful engineering careers.

The HNC develops and strengthens your core skills in engineering while preparing you to study more specialist subjects at Level 5 and degree level or to advance in employment roles that demand higher levels of responsibility.

You will gain a wide range of scientific and engineering knowledge linked to practical skills obtained through research, independent study, directed study and workplace scenarios. You will also develop transferable skills such as communication, teamwork and analysis.

Our HNCs have been quality marked by the Institute for Apprenticeships and Technical Education (IfATE) as Higher Technical Qualifications (HTQs). This indicates that they are aligned to employer-led occupational standards – so you can be confident that you will be equipped with industry-relevant skills for the workplace or higher levels of education.

## ENTRY REQUIREMENTS

You need to be highly motivated and should have at least one of the following:

- A Level 3 qualification with an overall grade of Merit or the equivalent. This could be in an engineering field or three A-levels in relevant subjects.
- Relevant full-time industrial experience of five years. If this work experience is not supported by educational qualifications such as GCSEs, you will need to evidence a minimum proficiency in Maths and English at Level 2.

## WHAT WILL YOU LEARN?

The qualification consists of eight units, four delivered each year.

Units common to both HNCs are:

- Engineering Design
- Engineering Maths
- Production Engineering for Manufacture
- Managing a Professional Engineering Project
- Quality and Process Improvement

Specialist modules are:

### HNC in Electrical and Electronic Engineering

- Automation, Robotics and Programmable Logic Controllers (PLCs)
- Electrical and Electronic Principles
- Electrical Machines

### HNC in Mechanical Engineering

- Fundamentals of Thermodynamics and Heat Engines
- Mechanical Principles
- Fluid Mechanics

## HOW WILL YOU LEARN?

You will attend the Roundhouse campus on one day a week and will have access to industry-standard software and a specially designed range of digital resources.

The course features 480 guided learning hours and you are expected to undertake private study, reading, revision, independent research and assessment preparation when not under supervision.

The core higher education year will last for 36 weeks for the purposes of maintenance loans. You will receive a proportion of this time as direct delivery with any additional time – as deemed appropriate by the programme team and the awarding body – for activities such as induction, tutorials, research, directed study and reading weeks. The direct delivery time for this course will be 32 weeks.

We work closely with our employer and educational partners to involve them in the design and delivery of the curriculum, so you will benefit from guest lectures by industry specialists, professional bodies and visiting academics.

## WHAT WILL YOU NEED TO BRING WITH YOU?

You will need to purchase a scientific calculator and have access to a computer or laptop with Internet, Windows 7 Operating System or above, and Microsoft Office or above. The purchase of appropriate books and e-books is encouraged and guidance on which books to purchase will be given by subject specialists.

## HOW WILL YOU BE ASSESSED?

You will produce academic reports and undertake assignments where you will solve technical problems closely aligned with industrial, commercial and domestic engineering scenarios. Evidence for your assessments will be generated through reports, practical performance, verbal presentations and projects completed both individually and as part of a team. Full details of the assessment and grading criteria can be found on our website.

## WHERE NEXT?

As a vocational qualification, the HNC provides you with a range of skills and knowledge that can be readily applied in your workplace and may lead to opportunities for career progression.

You will also be well prepared to progress to Level 5 study, including the second year of our Foundation Degree in Integrated Engineering, or another qualification/apprenticeship at degree level.

# Higher Apprenticeship – Engineering Manufacturing Technician

Level 4

Number of years: 3

Location: Workplace and The Roundhouse

**Manufacturing technicians have an important role to play across many sectors, helping bring new products to life and resolving problems. This Higher Apprenticeship will help you perform that role efficiently and effectively.**

## WHO IS THIS COURSE FOR?

This work-based apprenticeship, leading to a Higher National Certificate (HNC) in Engineering, is designed to help you advance your career as a manufacturing technician.

The programme supports manufacturing technicians found in large and small engineering and manufacturing organisations providing products and services throughout a wide range of sectors such as automotive, aerospace, chemical processing, land systems, marine, maritime defence, materials manufacturing, and their respective supply chains. Research indicates that these sectors need to recruit approximately 124,000 engineers and technicians every year.

As a manufacturing technician apprentice, you will build your capacity to provide specialist technical support for engineers, helping your organisation to develop, produce or test products, processes and procedures that meet customer specifications in terms of quality, cost and delivery.

You will learn how to analyse information and data from a range of sources to make decisions and produce technical documentation and reports. You will also become proactive in finding solutions to problems and identifying areas for improving business operations.

## ENTRY REQUIREMENTS

You should be in a relevant job role and employed for 30+ hours per week. Individual employers will set the selection criteria for their apprenticeships but – in order to optimise success – you should typically have five GCSEs at grade 4/5 (C) or above, including Mathematics, English and a Science, Technology or Engineering related subject, or 90+ credits in an Engineering BTEC at Level 3. As further guidance, the level of Mathematics has an advisory GCSE level of 5/6 (B).

## WHAT WILL YOU LEARN?

To be awarded the HNC, you must complete the following four mandatory modules:

- Engineering Design
- Engineering Maths
- Engineering Science
- Managing a Professional Engineering Project

You must also complete a minimum of four optional modules. Examples include:

- Mechatronics
- Mechanical Principles
- Electrical and Electronic Principles
- Digital Principles
- Electro, Pneumatics and Hydraulics
- Manufacturing Systems Engineering

## HOW WILL YOU LEARN?

The apprenticeship is delivered on the job in the workplace, with day-release studies at College over a two-year period.

## HOW WILL YOU BE ASSESSED?

Your knowledge and understanding for all modules will be assessed through a variety of methods, including written work such as assignments and presentations.

All assignment activity will support you in developing skills in academic writing, verbal presentations, teamwork and analysis. The College offers a comprehensive development programme as part of your studies to support your progression in these areas.

As an apprentice, you will also be assessed against the knowledge, skills and behaviours associated with the apprenticeship standard in preparation for your End Point Assessment (EPA).

## WHERE NEXT?

As a vocational qualification, the HNC equips you with a range of skills and knowledge that can be readily applied in the workplace and may lead to opportunities for career progression in roles such as manufacturing engineer – quality; manufacturing production engineer; manufacturing procurement engineer; quality engineer; costing engineer; test and commissioning engineer; installation engineer; process engineer; and production support engineer.

The level of independent research and critical thinking completed on this course, as well as the assessment methodology, also helps to prepare you for further study at Level 5 or degree level.

# Degree Apprenticeship – Electrical and Electronic Technical Support Engineer/ Manufacturing Engineer/Product Design and Development Engineer

Level 6

Number of years: 3

Location: Workplace and The Roundhouse

**Our Degree Apprenticeship is the ideal way to gain an Honours Degree in a specialist area of engineering and to work towards becoming a Chartered Engineer. You will earn as you learn too.**

## WHO IS THIS COURSE FOR?

This work-based apprenticeship is aimed at anyone in an engineering role who wants to take their career ambitions to the next level. You will study two Engineering courses on a day-release basis at College over a three-year period: a Foundation Degree in Integrated Engineering followed by a BEng (Hons) Engineering.

The Degree Apprenticeship includes specialist routes for:

- Electrical and electronic engineers, who want to support the development of new products and resolve manufacturing problems.
- Manufacturing engineers, who want to develop their skills in taking products from design to manufacture, ensuring that they are launched on time, at cost and to the right quality.
- Product design and development engineers, who want to harness engineering techniques effectively to bring new products to life or redesign existing products.

The combination of your university-level courses and your experience in your job will enable you to meet a national apprenticeship standard, subject to successful completion of an End Point Assessment (EPA) as the culmination of your apprenticeship.

## ENTRY REQUIREMENTS

You should be in a relevant job role, employed for 30+ hours per week.

To optimise success, you will typically have five GCSEs at grade C/4 or above, including Mathematics, English and a Science, Technology or Engineering-related subject as well as A-levels at grade C or above in both a Mathematical-based subject and a Science, Technology, Engineering or additional Mathematics-related subject, or 90+ credits in an Engineering BTEC.

The Product Design and Development Technician Apprenticeship also provides a potential preparation route for this degree.

## WHAT WILL YOU LEARN?

### FOUNDATION DEGREE

All students will complete core modules including:

- Engineering Principles
- Engineering Maths and Science
- Computing for Engineers
- Business and Project Management
- Work-based Project

Those following the Electrical and Electronic Engineer pathway will take additional modules in Machines and Drives and Introduction to PLCs; those on the Manufacturing Engineer pathway will take an additional module in Materials while those on the Product Design and Development Engineer pathway will take an additional module in Manufacturing Processes.

### HONOURS DEGREE

#### Electrical and Electronic Support pathway

- Electrical Power Systems
- Automation and Robotics
- Control Systems
- Project Management
- Final Project

#### Manufacturing Engineer pathway

- Operations Management
- Composites
- Design Evaluation Methodology
- Final Project

#### Product Design and Development Engineer pathway

- Project Management
- Systems Engineering
- Design Evaluation Methodology
- Final Project

## HOW WILL YOU LEARN?

The apprenticeship will be delivered in the workplace and via day release studies at College.

## HOW WILL YOU BE ASSESSED?

You will be assessed through a mixture of assignment-based coursework and exams.

## WHERE NEXT?

On completion of your qualifications, you can further your career as a professional engineering project manager, product design manager, or manufacturing engineer.

This apprenticeship standard has been designed to meet the professional standards of the Engineering Council for initial registration as an Engineering Technician (EngTech) in partnership with the Institution of Mechanical Engineers. Further professional development and registration is subject to candidates successfully completing the appropriate learning, developing the appropriate competence, and undergoing professional review.

You can also advance to Masters-level study at university.

# EQUINE SCIENCE

DCG will help you progress as a highly skilled, dedicated equine professional. Our higher education provision in Equine Science prepares the way for you to achieve your ambitions and take your career in exciting new directions.

The equestrian centre at Broomfield Hall is the perfect setting for higher level studies. Facilities include a fantastic indoor school with a full set of jumps to British Show Jumping standard, 40 stables, an outdoor school, a horsewalker and a cross country schooling field.

We are at the heart of the local equestrian community so there is always something happening on campus. Lecturers have vast industry experience and are passionate about helping you to succeed personally and professionally.

There are many ways in which we enrich your studies. You could go behind-the-scenes at major horse trials, take part in charity fundraising, compete in dressage and show jumping events, or join conferences where higher education students from across the country present their dissertation research. Alongside your studies, you will have the chance to gain British Horse Society (BHS) qualifications too.

As well as our popular Equine Science Foundation Degree, our portfolio includes a BSc (Hons) top-up programme. It means you can gain a full Honours Degree with just one extra year of full-time study or two years of part-time study.



The Foundation Degree Equine Science (FdSc) and BSc (Hons) Equine Science (Top Up) are delivered in partnership with and awarded by the University of Derby. Students will receive a University of Derby Certificate and will have the opportunity to join the University's Alumni Network on completion of their programme.

In partnership with



# Foundation Degree Equine Science (Rehabilitation and Performance or Riding and Coaching pathway) (FdSc)

Level 5

Number of years: **2 (full time) or 4 (part time)**

Location: **Broomfield Hall**

UCAS code: **D422**

**Featuring substantial work-based learning, this Foundation Degree – delivered in partnership with the University of Derby – offers an excellent route into more senior roles in the equine industry and enhances your professional credibility. It offers both riding and non-riding options.**

## WHO IS THIS COURSE FOR?

Offering two distinctive pathways for you to choose from – in Rehabilitation and Performance or Riding and Coaching – our Foundation Degree is specifically designed to combine the development of your academic knowledge and understanding with relevant vocational skills and competencies.

You will gain an appreciation of the latest equine scientific knowledge and how to apply that knowledge in the practical environment. You will also develop your awareness of event management and marketing techniques, including social media strategies, to promote entrepreneurship and business growth within the equine sector.

Upon successful completion of your studies, you will achieve a Foundation Degree from the University of Derby.

## ENTRY REQUIREMENTS

You need to be aged 18 or over at the beginning of the course and will be invited to an interview to discuss your qualifications, experience and any other related issues. You should have one of the following:

- 64 UCAS points – from either an Extended Diploma or National Diploma in Equine Management
- At least two A-levels or AS-levels in a science-related subject
- A GNVQ/NVQ Level 3 in an equine-related subject

You will also need four GCSEs at grades 9-4 (A\*-C), or the equivalent, to include English, Maths and Science.

BHS qualifications would be advantageous but are not essential. Relevant and comprehensive industry experience will also be considered.

All applicants should also meet minimum riding requirements:

- Experience of riding a variety of horses in a range of environments
- 13 stone weight limit

If you choose the riding option, you will have a riding assessment prior to starting the programme. It is desirable that you are riding towards BHS Stage 1 or equivalent and working towards BHS Stage 2 or equivalent.

All applicants are subject to approval from the University of Derby.

## WHAT WILL YOU LEARN?

### Stage 1

- Induction Module
- Animal Biology
- Study Skills
- Equine Anatomy and Physiology
- Equine Nutrition
- Yard Management
- Riding and Training Horses 1 (riding option)
- Equine Behaviour and Learning Theory (non-riding option)

### Stage 2

- Equine Health and Welfare
- Equine Disease and Disorders

- Equestrian Event Management
- Employability for the Equestrian Industry
- Riding and Training Horses 2 (riding option)
- Equine Rehabilitation and Therapy (non-riding option)

## HOW WILL YOU LEARN?

This modular programme will be delivered through engaging, interactive lectures and practical studies in our laboratories and on-site equestrian centre at Broomfield Hall as well as through work-based learning, equivalent to one day per week on placement. All lectures delivered on-site are face to face, with smaller class sizes meaning you get a real one-to-one learning experience. This will be enhanced by field trips (mandatory and voluntary) to enable you to apply theory to practice.

Your learning will be supported by our highly qualified teaching team who have a wealth of academic and professional experience in many specialist areas. Guest speakers will also ensure that you receive the most up-to-date guidance and knowledge.

The full-time programme includes 15 hours of taught material each week, with a minimum of 15 hours of expected self-study per week. The part-time programme includes eight hours of taught material each week, with a minimum of eight hours of expected self-study per week.

The core higher education academic year will be for a duration of 33 weeks for the purposes of maintenance loans. You will receive a proportion of this time as direct delivery, with any additional time – as deemed appropriate by the programme team and the awarding body – for activities such as induction, tutorials, research, directed study and reading weeks. The direct delivery time for this course will be 28 weeks.

## WHAT WILL YOU NEED TO BRING WITH YOU?

You will need to purchase personal protective equipment (PPE) for practical work at a cost of around £100. You will also need to contribute to any industry-relevant trips and visits throughout the course at a cost of around £150. These will be payable at the time of the planned trip or visit.

Optional costs include British Horse Society (BHS) membership in preparation for industry qualifications, which will be offered alongside the Foundation Degree, and BHS exams. See our website for further details.

## HOW WILL YOU BE ASSESSED?

We adopt a variety of methods for assessment including assignments, practical work, reports and poster presentations.

## WHERE NEXT?

Upon successful completion of this programme, you will be equipped with the knowledge, skills and hands-on experience to pursue a new career or advance an existing one in a wide variety of equestrian businesses, including self-employment.

The Foundation Degree also provides an ideal platform to top-up to a degree programme at Level 6 where you can specialise in a wide variety of subjects such as Equine Exercise and Physiology, and Training and Developing Horses. See overleaf for the BSc (Hons) qualification offered through DCG.

This course will run with a minimum of six students. In 2023-24 we enrolled 13 students on this programme.

# BSc (Hons) Equine Science (Biomechanics and Performance or Riding and Coaching pathway) (Top Up)

Level 6

Number of years: 1 (full time) or 2 (part time)

Location: Broomfield Hall

UCAS code: D424

**Centred on your employability, our BSc (Hons) enables you to top up a Level 5 qualification in a related discipline to a full Honours Degree. The course features research, training and professional development modules to refine your practice.**

## WHO IS THIS COURSE FOR?

The BSc (Hons) Equine Science provides a progression opportunity for students who already have a relevant Level 5 qualification and want to advance their career to more senior levels. It offers a choice of pathways in Riding and Coaching or Biomechanics and Performance.

It integrates academic and work-based learning to ensure you are fully equipped with the practical capabilities and knowledge you need. Our graduates can demonstrate a variety of key employability skills as well as significant industry experience.

The course can be completed full time over one year or part time over two years and offers both riding and non-riding options. The qualification is awarded by the University of Derby.

## ENTRY REQUIREMENTS

You need to be aged 18 or over at the beginning of the course and should have a Level 5 qualification in a relevant subject. You will also need four GCSEs at grades 9-4 (A\*-C), or the equivalent, to include English, Maths and Science.

All applicants will be invited to an interview to discuss their qualifications, experience and riding ability. All applicants should also meet minimum riding requirements:

- Experience of riding a variety of horses in a range of environments
- 13 stone weight limit

If you choose the riding option, you will have a riding assessment before starting the programme. It is desirable that you are riding towards BHS Stage 2 or the equivalent.

All applicants are subject to approval from the University of Derby.

## WHAT WILL YOU LEARN?

### Riding and Coaching pathway

- Equine Exercise Physiology
- Developments in Equine Science
- Independent Research Project
- Training and Developing Horses

### Biomechanics and Performance pathway

- Equine Exercise Physiology
- Developments in Equine Science
- Independent Research Project
- Equine Biomechanics and Performance

## HOW WILL YOU LEARN?

This course will be delivered in the equestrian centre and laboratories at Broomfield Hall. All lectures delivered on-site are face to face, with smaller class sizes meaning you have a real one-to-one learning experience. Lectures are interactive and engaging, with a variety of resources available to support your learning journey.

The core higher education academic year will be for a duration of 33 weeks for the purposes of maintenance loans. You will receive a proportion of this time as direct delivery, with any additional time – as deemed appropriate by the programme team and the awarding body – for activities such as induction, tutorials, research, directed study and reading weeks. The direct delivery time for this course will be 28 weeks.

## WHAT WILL YOU NEED TO BRING WITH YOU?

You will need to purchase personal protective equipment (PPE) for practical work at a cost of approximately £100. You will also need to contribute towards any industry-relevant trips and visits throughout the course at a cost of approximately £150. These will be payable at the time of the planned trip or visit.

Optional costs include British Horse Society (BHS) membership in preparation for industry qualifications, which will be offered alongside the degree, and BHS exams. Please see our website for further details.

## HOW WILL YOU BE ASSESSED?

Assessments use a variety of methods including assignments, practical work, reports, group presentations and poster presentations. All formative and summative assessment methods have been designed to focus on skills specific to the equine industry while incorporating key transferable skills.

## WHERE NEXT?

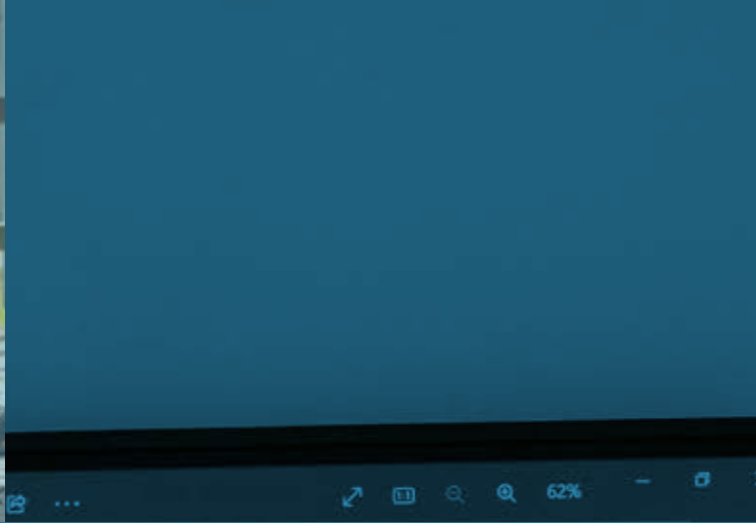
You can progress to employment in a practical setting in the equestrian industry – or advance your existing role – in fields such as owning/running a yard, teaching and coaching, or training and developing horses.

You can also consider employment in the equestrian industry linked to a range of other sectors, including sales and marketing, product development and business management roles. In addition there is the opportunity to build on your entrepreneurship skills and go into self-employment.

If you are interested in further academic study, you could also consider a Masters qualification or a move into research and development.

This course will run with a minimum of six students. In 2023-24 we enrolled seven students on this programme.





# HEALTH AND SOCIAL CARE

Whether you are looking to build your leadership skills, specialise in new areas or boost your prospects through higher level qualifications, DCG can help you advance a highly rewarding career in the health and social care sectors.

We are introducing a new Foundation Degree to our higher education portfolio which is relevant to the vast array of roles in health and social care settings today and which will take your professional skills and knowledge to the next stage.

At a time of constant developments in the way health and social care are delivered, we cover all the latest policy initiatives and modern practices. This will ensure you can meet the challenge of change and play your part in improving quality standards, productivity and efficiency in the services on which we all rely.

Excellent achievement rates, an expert teaching team and invaluable contacts with employers are hallmarks of the DCG approach. We have forged links with local authorities, hospitals, care homes, GP practices and other organisations across the health and social care sectors to help keep your learning up to date.



Sheffield  
Hallam  
University

# Foundation Degree Professional Practice in Health and Social Care (HTQ)

Level 5

Number of years: 2

Location: **The Roundhouse**



**Fast-track your progress into a fulfilling health and social care career. This inspiring part-time course features significant elements of work-based learning to hone your practical skills.**

This Higher Technical Qualification (HTQ) is ideal for students who already hold a relevant Level 3 qualification and wish to continue their studies. It is also aimed at individuals who have experience of the health and social care sector and are keen to gain a higher qualification to advance on their career path.

With work-based learning at its core, the course leads to a Level 5 Foundation Degree in Professional Practice in Health and Social Care. It combines academic work with the development of practical skills through relevant industry experience: this could be voluntary work experience or paid employment within the sector.

This course will run in partnership with Sheffield Hallam University.

## **ENTRY REQUIREMENTS**

You will need:

- A relevant Level 3 qualification
- Maths and English GCSE at grade 4 or above

Students with relevant work experience may be exempt from the Level 3 qualification requirement but should still have achieved the GCSE requirements.

## **WHAT WILL YOU LEARN?**

Units will include essential skills for working within the sector such as person-centred care. There will also be a focus on your own personal development through reflection and practical skills gained through work-based learning.

## **HOW WILL YOU LEARN?**

Course units will be delivered on-site. Practical elements will be assessed in the workplace.

## **WHAT WILL YOU NEED TO BRING WITH YOU?**

You will be required to obtain a College Enhanced DBS.

You will also need to secure your own industry experience that meets the needs of the course.

## **HOW WILL YOU BE ASSESSED?**

Assessment will be carried out through a variety of methods including essay and report writing, presentations, practical activities, case studies and role play.

## **WHERE NEXT?**

Possible progression opportunities into employment may include health and social care management or teaching.

Further education opportunities may include progression to degree courses such as Paramedic Science, Nursing, Social Work and Occupational Therapy.

# IT, DIGITAL SKILLS AND COMPUTER SCIENCE

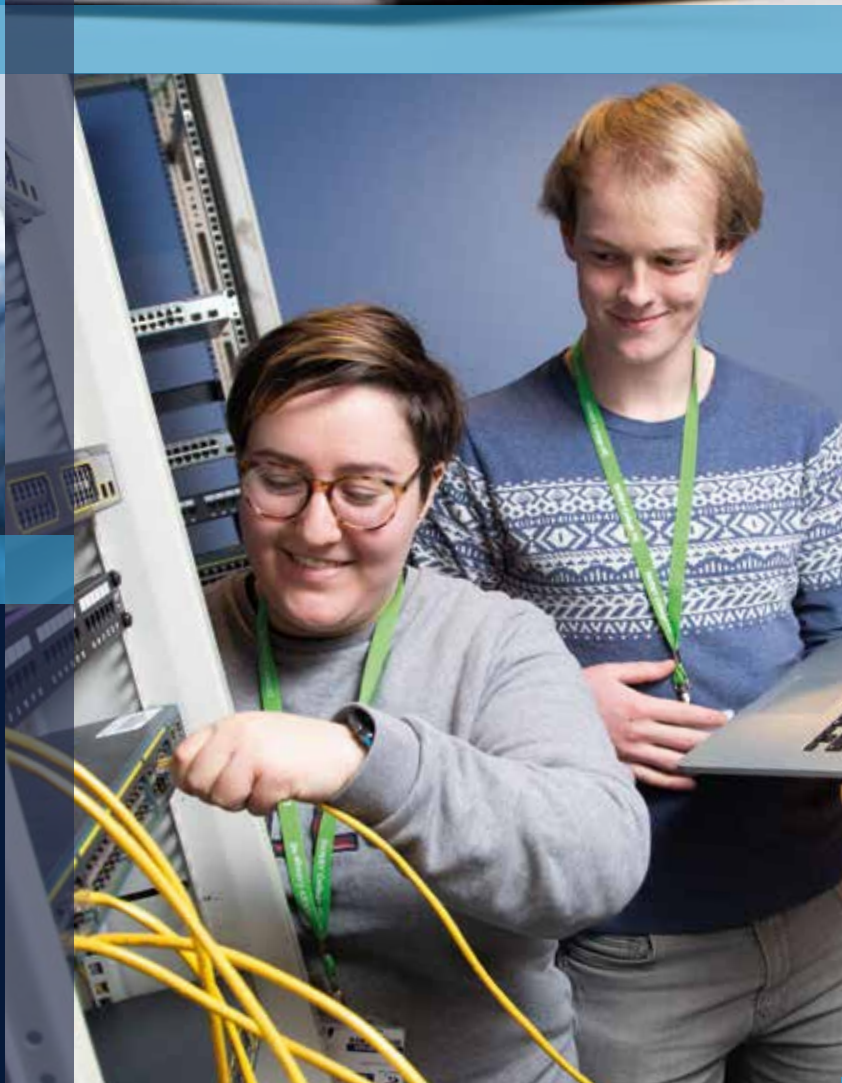
Take your place at the cutting edge of an industry which is constantly reaching new frontiers. If you aspire to a top career in the digital economy, DCG can help you build the advanced software development skills you need in the computing industry.

Employers today are seeking professionals with high-level digital capabilities who can make a real difference to an organisation's efficiency and impact.

Study with DCG and you will be able to develop technical skills based on real-world workplace scenarios, strengthening your career and promotion prospects in the rapidly changing digital age.

Our Foundation Degree in Software Development, offered in association with the University of Derby, provides an exciting new route for those seeking rapid progression in digital careers. It has just been approved as a Higher Technical Qualification (HTQ) because of the way it matches employer expectations.

You will harness latest technology, inspired by tutors with a wealth of industrial and academic experience. Our teaching is always up to date and relevant in areas like programming, computational mathematics, data driven systems, scripting and web technologies, IT product design, and software engineering. You will also have the chance to interact with CEOs of local computing companies to gain further insights into career progression opportunities.



The Foundation Degree Software Development (FdSc) is delivered in partnership with and awarded by the University of Derby. Students will receive a University of Derby Certificate and will have the opportunity to join the University's Alumni Network on completion of their programme.

In partnership with



# Foundation Degree Software Development (FdSc) (HTQ)

Level 5

Number of years: 2

Location: **The Joseph Wright Centre**

UCAS code: **F200**



**If you want to pursue or advance a career as a software developer in the fast-moving digital sector, our new Foundation Degree will give you a strong knowledge base enhanced by wide-ranging engagement with employers.**

## WHO IS THIS COURSE FOR?

New to our portfolio, this dynamic Foundation Degree is a smart choice for anyone interested in exploring all aspects of software design. It includes opportunities for a relevant work placement or meaningful employer engagement each academic year.

The Foundation Degree has been quality marked by the Institute for Apprenticeships and Technical Education (IfATE) as a Higher Technical Qualification (HTQ). This indicates that it is aligned to employer-led occupational standards – so you can be confident that you will be equipped with industry-relevant skills for the workplace or higher levels of education.

The programme is approved through, and forms part of, the University of Derby's School of Computing and Engineering. The qualification is awarded by the University of Derby.

## ENTRY REQUIREMENTS

You will need to be aged 18 or over at the beginning of the course and will be invited to complete an online interview – or a site visit at which interviews will take place – to discuss your qualifications, experience and any other related topics.

You should have one of the following:

- 48 UCAS points, with at least 32 preferably coming from a related subject such as ICT or Computer Sciences
- Access to HE qualifications

You will also need:

- GCSE English at grades 9-4 (A\*-C)
- An appropriate competency in maths for higher level study

All applicants are subject to approval from the University of Derby.

## WHAT WILL YOU LEARN?

In Year 1 there are six modules split over two 12-week semesters:

- Programming
- Computational Mathematics
- Foundations of Computer and IT Systems
- Computer Systems, Data Structures and Data Management
- Scripting and Web Technologies
- Work-based Project

In Year 2 there are six modules split over two 12-week semesters:

- Legal and Ethical Issues in Computing
- Software Engineering
- Data Driven Systems
- IT Product Design
- IT Services and Applications
- Team Project

You will be expected to undertake a relevant work placement or meaningful employer engagement each academic year.

## HOW WILL YOU LEARN?

You will learn on-site at the Joseph Wright Centre, taught by experienced higher education lecturers who have had careers within the digital and IT sector and who can relate this topic using a diverse range of scenarios.

While your on-site studies are likely to be timetabled over two or three days per week, there is an expectation that you will spend the equivalent of a further three days in independent study and research. You will also undertake a period of mandatory employer engagement to support your studies.

This may involve you being invited in on non-timetabled days or working with employers during weekends to fulfil some elements of the course. Please note that classes can take place over traditional half-term holidays that fall within the identified semester weeks.

The core higher education academic year will be for a duration of 33 weeks for the purposes of maintenance loans. You will receive a proportion of this time as direct delivery, with any additional time – as deemed appropriate by the programme team and the awarding body – for activities such as induction, tutorials, research, directed study and reading weeks. The direct delivery time for this course will be 30 weeks.

Your attendance is expected to be no lower than 90%. This is linked to Student Finance England maintenance loans which will be put at risk if you drop below this level.

## WHAT WILL YOU NEED TO BRING WITH YOU?

It is advisable that you have access to your own laptop for research and assignment writing.

Additional trips and visits are usually provided as part of your study programme. However, there may be social or team-building opportunities which would incur additional costs. As a University of Derby affiliate, you would be able to access the same events and activities that are offered to higher education students there.

## HOW WILL YOU BE ASSESSED?

You will be assessed using a variety of methods which may include practical and theory exams, reports and assignments, presentations and project work. The assessment methods are designed to review your understanding and knowledge relevant to the digital sector.

## WHERE NEXT?

The Foundation Degree provides the perfect progression platform for further study on a relevant top-up degree.

You may also wish to progress to employment within the sector as a software developer.

# PROFESSIONAL CONSTRUCTION

In an era of dramatic change for the UK construction industry, well-qualified, forward-thinking and dynamic managers are in demand like never before. Seize the opportunity and let DCG put you on the path to more senior professional roles.

Whatever your ambition, DCG will equip you with the skills, strategic know-how and confidence you need to excel in a fascinating global industry which is worth £90 billion annually to the UK economy.

This is a rewarding time to take your career forward, especially as the industry is striving to address the country's Net Zero Strategy and implement low-carbon, sustainable construction projects in efficient and cost-effective ways.

You will benefit from our close ties with employers across the sector, expert teaching by industry-experienced professionals, exceptional learning facilities, and the real-world relevance which underpins every aspect of our courses.



Our portfolio includes HNC programmes which reflect the knowledge, skills and behaviours identified by employers for success in the workplace. They represent the latest in professional standards and take a highly practical approach to learning, so you will have the chance to respond to client briefs or undertake group projects. The HNCs can be taken as standalone qualifications or as part of our exciting range of Higher Apprenticeships.

Your studies will also match the requirements of professional bodies to give extra credibility to your qualification. In addition, our emphasis on research, problem-solving, cognitive and interpersonal skills provides the ideal platform if you want to progress further in your education.

When you complete your studies, you will be a versatile, self-reflecting professional able to meet and adapt to the demands of the industry in a constantly changing world.

Four of our HNC programmes in Professional Construction have just been designated as Higher Technical Qualifications (HTQs). HTQs are quality marked by the Institute for

Apprenticeships and Technical Education (IfATE) to indicate that they are fully aligned to employer-led occupational standards.

The government is promoting higher technical education as a high-quality option to get ahead, alongside apprenticeships and degrees. For more information on HTQs, please visit:

[www.instituteforapprenticeships.org/qualifications/higher-technical-qualifications](http://www.instituteforapprenticeships.org/qualifications/higher-technical-qualifications)



# HNC in Construction Management for England (HTQ)

Level 4

Number of years: 2

Location: **The Roundhouse**



**If you're looking for a broad introduction to different construction management functions, together with the chance to develop strong practical skills, this part-time HNC will enable you to work towards your career goals.**

## WHO IS THIS COURSE FOR?

Are you employed as a design and build technician, assistant construction site supervisor or assistant project manager in the construction and the built environment industry? Our flexible two-year HNC will pave the way for you to secure more senior roles.

You can study this qualification as a standalone qualification or as part of the Level 4 Higher Apprenticeship for Construction Site Supervisors. The course has been developed in collaboration with several construction employers and leading professional bodies.

Working in the industry and studying at the same time requires you to have good time management and organisational skills. However, it also enables you to utilise the skills you have gained in your own professional practice.

This qualification has been approved as a Higher Technical Qualification (HTQ). HTQs are quality marked by the Institute for Apprenticeships and Technical Education (IfATE) to indicate their alignment to employer-led occupational standards.

## ENTRY REQUIREMENTS

You need to be highly motivated and working in the construction industry. You should have at least one of the following:

- A Level 3 qualification with an overall grade equivalent of Merit. This could be a Level 3 qualification in a construction-related field, three A-levels in relevant subjects or a Level 3 qualification in Engineering.
- Relevant full-time work/industrial experience of five years. If this work experience is not supported by education qualifications such as GCSEs, then a minimum proficiency in Maths and English at Level 2 needs to be evidenced.

Offers of a place on the course are dependent on your achieved qualifications and a successful interview.

## WHAT WILL YOU LEARN?

You will study eight core mandatory units – each worth 15 credits – over 18 months.

There are two pathways available for this HNC:

- HNC in Construction Management for England (Construction Design and Build Technician)
- HNC in Construction Management for England (Construction Site Supervisor)

Units for the Construction Design and Build Technician pathway include:

- Construction Design Project (Pearson-set)
- Construction Technology
- The Construction Environment
- Digital Applications for Construction Information or Digital Applications for Building Information Modelling
- Legal and Statutory Requirements in Construction
- Financial Management and Business Practices in Construction
- Building Information Modelling
- Tender and Procurement

Units for the Construction Site Supervisor pathway include:

- Construction Design Project (Pearson-set)

- Construction Technology
- The Construction Environment
- Digital Applications for Construction Information or Digital Applications for Building Information Modelling
- Legal and Statutory Requirements in Construction
- Financial Management and Business Practices in Construction
- Surveying, Measuring and Setting-Out
- Site Supervision and Operations

## HOW WILL YOU LEARN?

This course is delivered on-site in the Hudson Building on the Roundhouse campus and you will attend College one day a week. It entails 480 guided learning hours such as lectures, tutorials, online instruction and supervised study.

The core higher education academic year will be for a duration of 30 weeks for the purposes of maintenance loans. You will receive a proportion of this time as direct delivery, with any additional time – as deemed appropriate by the programme team and the awarding body – for activities such as induction, tutorials, research, directed study and reading weeks. The direct delivery time for this course will be 30 weeks.

You will attend academic and study skills tutorials and you are expected to complete private study, prepare for and undertake assessments when not under supervision, including preparatory reading, revision and independent research.

We work closely with employer partners to engage them in the design and delivery of the curriculum. This includes guest lectures from industry specialists, professional bodies and visiting academics. We also encourage you to join the CIOB at student membership level during your studies.

## WHAT WILL YOU NEED TO BRING WITH YOU?

You will need to purchase a scientific calculator and technical drawing equipment. For voice-over PowerPoint presentations, you will need access to a microphone.

You will also need access to a computer or laptop with Internet, Windows 7 Operating System or above, Microsoft Office 2010 or above, and the ability to run Revit or AutoCAD Architecture which can be downloaded for free.

The purchase of appropriate books and e-books is encouraged and guidance on which books to purchase will be given by subject specialists.

## HOW WILL YOU BE ASSESSED?

You will produce academic reports and undertake assignments where you will have the opportunity to solve technical problems closely aligned to industrial, commercial and domestic construction scenarios. Evidence for some of the assessments will be generated through a range of activities, including reports, practical performance, verbal presentations and tasks/projects completed both individually and as part of a team.

Full details of the grading system are available on our website.

## WHERE NEXT?

On completion of the HNC, you will be able to perform key construction management tasks, understand processes and operations, and work more effectively.

Your qualification will put you on the path to success in job roles such as design and build technician, assistant construction site supervisor, assistant project manager, assistant health and safety manager, and quantity surveyor technician.

You could also consider progressing to a Level 5 HND, a BSc/BEng Honours Degree or a Degree Apprenticeship at Level 6 in a related discipline.



# HNC in Modern Methods of Construction for England (HTQ)

Level 4

Number of years: 2

Location: **The Roundhouse**

**Studied as a standalone qualification or as part of a Higher Apprenticeship, this part-time HNC is an excellent way to extend your knowledge of modern methods of construction and to take your career to the next level.**

## WHO IS THIS COURSE FOR?

If you are employed as a junior construction design and build technician, offsite construction manager trainee, housing design technician, BIM technician, digital design technician or architectural technologist, this two-year part-time course is for you.

It provides a broad introduction to different modern methods of construction functions, developing and strengthening your core skills while preparing you for studying more specialist subjects at Level 5 or to progress in employment in job roles that require greater personal responsibility.

The HNC delivers a wide range of construction knowledge linked to practical skills gained through research, independent study, directed study and workplace scenarios. It entails vocational activities that help you to develop the behaviours employers are seeking as well as transferable skills such as communication, teamwork, research and analysis.

The qualification has been developed in collaboration with construction employers and leading professional bodies.

You can study the HNC qualification as a standalone qualification or as part of the Level 4 Higher Apprenticeship for Design and Build Technicians. Working in the industry and studying at the same time will require you to have good time management and organisational skills. However, it should also enable you to utilise the skills you have gained in your own professional practice.

Please note that this qualification has been approved as a Higher Technical Qualification (HTQ). HTQs are quality marked by the Institute for Apprenticeships and Technical Education (IfATE) to indicate their alignment to employer-led occupational standards.

## ENTRY REQUIREMENTS

You need to be highly motivated and working in the construction industry. You should have at least one of the following:

- A Level 3 qualification with an overall grade equivalent to Merit. This could be a Level 3 qualification in a construction-related field, three A-levels in relevant subjects or a Level 3 qualification in Engineering.
- Relevant full-time work/industrial experience of five years. If this work experience is not supported by education qualifications such as GCSEs, then a minimum proficiency in Maths and English at Level 2 needs to be evidenced.

Offers of a place on the course are dependent on your achieved qualifications and a successful interview.

## WHAT WILL YOU LEARN?

You will study eight core mandatory units – each worth 15 credits – over 18 months:

- Construction Design Project (Pearson-set)
- Construction Technology
- The Construction Environment
- Digital Applications for Construction Information or Digital Applications for Building Information Modelling
- Building Information Modelling
- Tender and Procurement
- Principles of Alternative Energy
- Principles of Off-site Construction

## HOW WILL YOU LEARN?

This course is delivered on-site in the Hudson Building on the Roundhouse campus and you will attend College for one day a week. It entails 480 guided learning hours such as lectures, tutorials, online instruction and supervised study.

The core higher education academic year will be for a duration of 30 weeks for the purposes of maintenance loans. You will receive a proportion of this time as direct delivery with any additional time – as deemed appropriate by the programme team and the awarding body – for activities such as induction, tutorials, research, directed study and reading weeks. The direct delivery time for this course will be 30 weeks.

You will attend academic and study skills tutorials and you are expected to complete private study, prepare for and undertake assessments when not under supervision – including preparatory reading, revision and independent research.

We work closely with our employer partners to engage them in the design and delivery of the curriculum where possible. This includes guest lectures from industry specialists, professional bodies and visiting academics. We encourage you to join the CIOB at student membership level during your studies.

## WHAT WILL YOU NEED TO BRING WITH YOU?

You will need to purchase a scientific calculator and technical drawing equipment. For voice-over PowerPoint presentations, you will need access to a microphone.

You will also need access to a computer or laptop with Internet, Windows 7 Operating System or above, Microsoft Office 2010 or above, and the ability to run Revit or AutoCAD Architecture which can be downloaded for free.

The purchase of appropriate books and e-books is encouraged and guidance on which books to purchase will be given by subject specialists.

## HOW WILL YOU BE ASSESSED?

You will produce academic reports and undertake assignments where you will have the opportunity to solve technical problems closely aligned to industrial, commercial and domestic construction scenarios. Evidence for some of the assessments will be generated through a range of activities, including reports, practical performance, verbal presentations and tasks/projects completed both individually and as part of a team.

Full details of the grading system are available on our website.

## WHERE NEXT?

On completion of the HNC, you will be able to perform key modern methods of construction tasks, understand processes and operations, and work more effectively. Your qualification will put you on the path to success in job roles such as:

- Construction design and build technician
- Assistant offsite construction manager
- BIM technician
- Digital design technician
- Architectural technologist

You could also consider progressing to a Level 5 HND, a BSc/BEng Honours Degree or a Degree Apprenticeship at Level 6 in a related discipline, drawing on the broad knowledge base you will have gained from this course.





### **Up-to-the-minute resources**

Our higher education students have access to industry-standard software such as Autodesk and Microsoft Project as well as the Construction Information Service (CIS) online tool developed by IHS Markit and NBS.

CIS gives you quick access to current regulations, construction standards, technical advice and industry news on building, engineering, design, and construction processes in the UK. Updated weekly, it offers a powerful search engine to find authoritative information from over 26,000 documents for every stage of the construction lifecycle – from design and completion to operation and maintenance.

Easy-to-use search filters allow you to access full text copies of British standards and technical data from over 500 publishers.

# HNC in Architectural Technology for England (HTQ)

Level 4

Number of years: 2

Location: **The Roundhouse**



**If you are employed as a junior construction design and build technician, junior architectural technologist, junior housing design technician, junior BIM technician or junior digital design technician, this two-year part-time course is for you.**

## WHO IS THIS COURSE FOR?

Are you employed as a junior construction design and build technician, junior architectural technologist, junior housing design technician, junior BIM technician or junior digital design technician? Then this two-year part-time course is for you.

You can study this qualification as a standalone qualification or as part of the Level 4 Higher Apprenticeship for Design and Build Technicians. This qualification has been developed in collaboration with several construction employers, educational institutions and professional bodies.

Working in the industry and studying at the same time will require you to have good time management and organisational skills. However, it also enables you to utilise the skills you have gained in your professional practice.

This qualification has been approved as a Higher Technical Qualification (HTQ). HTQs are quality marked by the Institute for Apprenticeships and Technical Education (IfATE) to indicate their alignment to employer-led occupational standards.

## ENTRY REQUIREMENTS

You need to be highly motivated and working in the construction industry. You should have at least one of the following:

- A Level 3 qualification with an overall grade equivalent of Merit. This could be a Level 3 qualification in Construction or construction-related field, three A-levels in relevant subjects or a Level 3 qualification in Engineering.
- Relevant work/industrial experience of five years full time. If this work experience is not supported by education qualifications such as GCSEs, then a minimum proficiency in Maths and English at Level 2 needs to be evidenced.

Offers of a place on the course are dependent on your achieved qualifications and a successful interview.

## WHAT WILL YOU LEARN?

The qualification entails 480 guided learning hours and 120 credits. You will study eight core mandatory units in total (each unit involves 15 credits) over 18 months (five units in the first academic year and three in the following year).

The units in this qualification include:

- Construction Design Project (Pearson-set)
- Construction Technology
- The Construction Environment
- Legal and Statutory Requirements in Construction
- Digital Applications for Construction Information
- Building Information Modelling
- Principles of Refurbishment
- Digital Applications for Building Information Modelling

## HOW WILL YOU LEARN?

This course is delivered on-site in the Hudson Building on the Roundhouse campus. You will attend College one day a week and the course entails 480 guided learning hours such as lectures, tutorials, online instruction and supervised study.

You are expected to undertake private study, prepare for assessment and undertake assessment when not under supervision, such as preparatory reading, revision and independent research.

We work closely with our partners to engage them in the design and delivery of the curriculum where possible. This includes guest lectures from industry specialists, professional bodies and visiting academics.

## WHAT WILL YOU NEED TO BRING WITH YOU?

You will need to purchase a scientific calculator and technical drawing equipment. For voice-over PowerPoint presentations you will need access to a microphone.

You will also need access to a computer or laptop with Internet, Windows 7 Operating System or above, Microsoft Office 2010 or above, and the ability to run Revit or AutoCAD Architecture which can be downloaded for free from Autodesk for students.

The purchase of appropriate books and e-books is encouraged and guidance on which books to purchase will be given by subject specialists.

## HOW WILL YOU BE ASSESSED?

You will produce academic reports and undertake technical assignments where you will have the opportunity to solve technical problems closely aligned with industrial, commercial and domestic construction scenarios. Evidence for some of the assessments will be generated through a range of activities, including academic reports, practical performance, verbal presentations and tasks/projects completed both individually and as part of a team.

## WHERE NEXT

On completion of the HNC you will be able to perform key architectural technology tasks, understand processes and operations, and work effectively. Your qualification will pave the way into employment in job roles such as assistant architectural technologist, construction design and build technician, BIM technician, digital design technician and housing design technician.

You could progress to an HND at Level 5 or to a BSc (Hons) Architectural Technology, Construction Technology or Architectural Technology and Design, drawing on the broad knowledge base you will have gained from this course.

# HNC in Quantity Surveying for England (HTQ)

Level 4

Number of years: 2

Location: **The Roundhouse**



**Studied as a standalone qualification or as part of a Higher Apprenticeship, this part-time HNC is an excellent way to extend your knowledge of quantity surveying and take your career to the next level.**

## WHO IS THIS COURSE FOR?

If you are employed as a construction quantity surveying technician, this two-year part-time course is for you.

You can study this programme as a standalone qualification or as part of the Level 4 Quantity Surveying Technician Apprenticeship. It provides a broad introduction to construction and different quantity surveying functions. This develops and strengthens your core skills while preparing you for specialist subjects at Level 5 or to enter employment with the qualities necessary for job roles that require some personal responsibility.

The HNC delivers a wide range of construction knowledge linked to practical skills gained through research, independent study, directed study and workplace scenarios. It entails vocational activities that help you to develop behaviours that employers are seeking as well as transferable skills such as communication, teamwork, research and analysis.

This qualification has been developed in collaboration with several construction employers, educational institutions and professional bodies.

Working in the industry and studying at the same time will require you to have good time management and organisational skills. However, it should also offer you the opportunity to utilise the skills you have learned in your professional practice.

Please note that this qualification is a Higher Technical Qualification (HTQ). HTQs are quality marked by the Institute for Apprenticeships and Technical Education (IfATE) to indicate their alignment to employer-led occupational standards.

## ENTRY REQUIREMENTS

You need to be highly motivated and working in the construction industry. You should have at least one of the following:

- A Level 3 qualification with an overall grade equivalent of Merit. This could be a Level 3 qualification in Construction or construction-related field, three A-levels in relevant subjects or a Level 3 qualification in Engineering.
- Relevant work/industrial experience of five years full time. If this work experience is not supported by education qualifications such as GCSEs, then a minimum proficiency in Maths and English at Level 2 needs to be evidenced.

Offers of a place on the course are dependent on your achieved qualifications and a successful interview.

## WHAT WILL YOU LEARN?

You will study eight core mandatory units in total (each unit entails 15 credits) over 18 months:

- Construction Design Project (Pearson-set)
- The Construction Environment
- Digital Applications for Construction Information or Digital Applications for Building Information Modelling
- Measurement and Estimating
- Tender and Procurement
- Construction Economics and Sustainability
- Quantity Surveying Practice
- Law and Legal Frameworks in Quantity Surveying

## HOW WILL YOU LEARN?

This course is delivered on-site in the Hudson Building on the Roundhouse campus. You will attend College one day a week. The course has 480 guided learning hours, which entail lectures, tutorials, online instruction and supervised study.

You will attend academic and study skills tutorials and will complete private study, prepare for and undertake assessments when not under supervision – including preparatory reading, revision and independent research.

We work closely with our employer partners to engage them in the design and delivery of the curriculum where possible. This includes guest lectures from industry specialists, professional bodies and visiting academics. We encourage you to join the RICS at student membership level during your study of this course.

## WHAT WILL YOU NEED TO BRING WITH YOU?

You will need to purchase a scientific calculator and technical drawing equipment. For voice-over PowerPoint presentations you will need access to a microphone.

You will also need access to a computer or laptop with Internet, Windows 7 Operating System or above, Microsoft Office 2010 or above, and the ability to run Revit or AutoCAD Architecture which can be downloaded for free from Autodesk for students.

The purchase of appropriate books and e-books is encouraged and guidance on which books to purchase will be given by subject specialists.

## HOW WILL YOU BE ASSESSED?

You will produce academic reports and undertake technical assignments where you will have the opportunity to solve technical problems closely aligned with industrial, commercial and domestic construction scenarios. Evidence for some of the assessments will be generated through a range of activities, including academic reports, practical performance, verbal presentations and tasks/projects completed both individually and as part of a team.

Full details of the grading system are on our website.

## WHERE NEXT?

On completion of the HNC, you will be able to perform key quantity surveying tasks, understand processes and operations, and work effectively. Your qualification will pave the way into employment as a senior construction quantity surveying technician.

You could also consider progressing to a HND at Level 5 or to a BA (Hons)/BSc (Hons) Quantity Surveying, drawing on the broad knowledge base you will have gained from this course.

# HNC in Construction (Building Services – Heating, Ventilation and Air Conditioning)

Level 4

Number of years: 2

Location: **The Roundhouse**

**Studied as a standalone qualification or as part of a Higher Apprenticeship, this part-time HNC is an excellent way to extend your knowledge of heating, ventilation and air conditioning to take your career to the next level.**

## WHO IS THIS COURSE FOR?

If you are employed as a technician, in management or in designing HVAC systems in the building services engineering sector within the construction and the built environment industry, this two-year part-time course is an ideal way of moving your career forward.

You can study this HNC qualification as a standalone qualification or as part of the Higher Apprenticeship for Building Services Engineering Senior Technicians.

Working in the industry and studying at the same time will require you to have good time management and organisational skills. However, it should also offer you the opportunity to utilise the skills you have learned in your professional practice.

This qualification has been developed to meet the requirements of several professional bodies including the Chartered Institution of Building Services Engineers (CIBSE) and the Chartered Institute of Plumbing and Heating Engineers (CIPHE).

## ENTRY REQUIREMENTS

You need to be highly motivated and working in the building services industry. You should have at least one of the following:

- A Level 3 qualification with an overall grade equivalent of Merit. This could be a BTEC Level 3 qualification in Building Services Engineering, a BTEC Level 3 qualification in Construction and the Built Environment, three A-levels in relevant subjects or a Level 3 qualification in Engineering.
- Relevant work/industrial experience of five years full time. If this work experience is not supported by education qualifications such as GCSEs, then a minimum proficiency in Maths and English at Level 2 needs to be evidenced.

Offers of a place on the course are dependent on your achieved qualifications and a successful interview.

## WHAT WILL YOU LEARN?

You will study eight units in total over two academic years (four units a year). Each unit entails 15 credits.

The units in this qualification include:

- Individual Project (theme is set by the awarding body) – mandatory
- Construction Technology – mandatory
- Construction Practice and Management – mandatory
- Mathematics for Construction – mandatory
- Principles of Heating Services Design and Installation – mandatory
- Principles of Ventilation and Air Conditioning Design and Installation – mandatory
- Scientific Principles for Building Services – mandatory
- Principles of Alternative Energy – optional (please note that the choice of optional unit may be changed based on the availability of the teaching staff.)

## HOW WILL YOU LEARN?

This course is delivered on-site in the Hudson and Stephenson Buildings on the Roundhouse campus. You will attend College one day a week. The course has 480 guided learning hours such as lectures, tutorials, online instruction and supervised study.

Students are expected to undertake private study, prepare for assessment and undertake assessment when not under supervision, such as preparatory reading, revision and independent research.

We work closely with our employer and education partners to engage them in the design and delivery of the curriculum where possible. This includes guest lectures from industry specialists, professional bodies and visiting academics.

## WHAT WILL YOU NEED TO BRING WITH YOU?

You will need to purchase a scientific calculator for the mathematical calculations in your coursework. For voice-over PowerPoint presentations you will need access to a microphone.

You will also need access to a computer or laptop with Internet, Windows 7 Operating System or above, Microsoft Office 2010 or above, and the ability to run AutoCAD Architecture which can be downloaded for free.

The purchase of appropriate books and e-books is encouraged and guidance on which books to purchase will be given by subject specialists.

## HOW WILL YOU BE ASSESSED?

For your course assessments, you will produce academic reports and undertake technical assignments where you will have the opportunity to solve technical problems closely aligned with industrial building services and construction scenarios. Evidence for some of the assessments will be generated through a range of activities, including practical performance, verbal presentations and tasks/projects completed both individually and as part of a team.

Full details of the grading system are on our website.

## WHERE NEXT?

On completion of the HNC, you will be able to meet the demands of employers in the construction and building services engineering sectors and adapt to a constantly changing world. The qualification aims to widen access to higher education and enhances the career prospects of those who undertake it.

Your qualification will put you on the path to success in job roles such as heating/cooling system designer, heating/cooling system installer, and acoustics designer installer.

You could also consider progressing to a Level 5 HND, a BSc/BEng degree or Degree Apprenticeship at Level 6 in a related discipline.

# Higher Apprenticeship – Building Services Engineering Senior Technician

Level 4

Number of years: 3

Location: The Roundhouse

**Aimed at professionals within the building services sector, this Higher Apprenticeship is an excellent route to more senior positions and greater earning potential.**

## WHO IS THIS COURSE FOR?

Typical job roles associated with apprenticeship can include heating/cooling system designer, heating/cooling system installer, acoustics designer/installer, assistant design engineer, assistant engineer and building services engineering senior technician.

As part of your apprenticeship, you will complete the HNC in Construction (Building Services – Heating, Ventilation and Air Conditioning): see page 52.

The programme includes the knowledge, skills and behaviours required to achieve Technician status – or the equivalent – with the industry's recognised professional bodies.

The duration for this apprenticeship is usually three years (which does not include the End Point Assessment of four months) but this will depend upon your previous experience and your access to opportunities to gain the full range of competence.

## ENTRY REQUIREMENTS

You need to be highly motivated and working in the building services industry. You should have at least one of the following:

- A Level 3 qualification with an overall grade equivalent of Merit. This could be a BTEC Level 3 qualification in Building Services Engineering, a BTEC Level 3 qualification in Construction and the Built Environment, three A-levels in relevant subjects or a Level 3 qualification in Engineering.
- Relevant work/industrial experience of five years full time. If this work experience is not supported by education qualifications such as GCSEs, then a minimum proficiency in Maths and English at Level 2 needs to be evidenced.

Offers of a place on the course are dependent on your achieved qualifications and a successful interview.

## WHAT WILL YOU LEARN?

This apprenticeship requires you to achieve the HNC in Construction (Building Services – Heating, Ventilation and Air Conditioning). You will develop knowledge and skills in:

- Engineering principles
- Building services engineering techniques
- Sustainability
- Project management
- Technical drawings, designs, and models
- Policies and procedures
- Mathematical, statistical and data interpretation

You will also be expected to demonstrate behaviours such as:

- Problem solving
- Independent decision making
- Commitment to a code of ethics
- Working in teams
- Working to health, safety and welfare requirements
- Effective communications

You will need to achieve English and Maths at Level 2 before taking your End Point Assessment and this will be included in your Level 4 qualification.

See our website for full details of the knowledge, skills and behaviours required.

## HOW WILL YOU LEARN?

The apprenticeship entails a combination of work-based learning with the help of an assessor and learning at the College by completing the HNC on a part-time basis.

## WHAT WILL YOU NEED TO BRING WITH YOU?

You will need to purchase a scientific calculator for the mathematical calculations in your coursework. For voice-over PowerPoint presentations you will need access to a microphone.

You will also need access to a computer or laptop with Internet, Windows 7 Operating System or above, Microsoft Office 2010 or above, and the ability to run AutoCAD Architecture which can be downloaded for free.

The purchase of appropriate books and e-books is encouraged and guidance on which books to purchase will be given by subject specialists.

## HOW WILL YOU BE ASSESSED?

You will need to build a portfolio of work-based learning evidence with the help of your assessor in readiness for the End Point Assessment (EPA). For the assessment of the HNC in Construction (Building Services – Heating, Ventilation and Air Conditioning), please see page 52.

## WHERE NEXT?

Completing this apprenticeship standard paves the way into employment in one of the following job roles:

- Heating/cooling system designer
- Heating/cooling system installer
- Acoustics designer/installer
- Assistant design engineer
- Assistant engineer
- Building services engineering senior technician
- Building services engineering supervisor
- Building services site technician
- Infrastructure senior technician
- Mechanical engineering senior technician
- Senior BIM technician
- Senior construction technician
- Senior design technician
- Senior engineering technician
- Senior MEP technician
- Senior REVIT technician
- Senior site technician

You could also progress to a Level 5 HND or to a BSc/BEng degree or Degree Apprenticeship at Level 6 in a related discipline, drawing on the broad knowledge base you will have gained from this course.

We encourage you to become a member of the Chartered Institution of Building Services Engineers (CIBSE) at licentiate level.

# Higher Apprenticeship – Construction Design and Build Technician

Level 4

Number of years: 3

Location: The Roundhouse

**If your role involves the co-ordination of design information on construction projects, this Higher Apprenticeship will give you the chance to broaden your knowledge, upgrade your skills and boost your career prospects.**

## WHO IS THIS COURSE FOR?

Typical job roles associated with this apprenticeship can include junior construction design and build technician, assistant design co-ordinator or design and build co-ordinator. In the case of small or medium-sized construction companies, the roles are likely to include design co-ordinator or design manager. They are mainly based on construction sites, with occasional time in offices.

As part of your apprenticeship, you will complete either the HNC in Construction Management (Design and Build Technician Pathway) or the HNC in Modern Methods of Construction (see pages 47-48). These HNCs are approved by the industry's recognised professional bodies as meeting the educational requirements for Technician status or the equivalent level of membership. Your final assessment process will typically be partly representative of the review process required for professional registration.

The duration for this apprenticeship is usually three years but this will depend upon your previous experience and your access to opportunities to gain the full range of competence.

## ENTRY REQUIREMENTS

You need to be highly motivated and working in the construction industry. Your job role and responsibilities should allow you to provide evidence for the knowledge, skills and behaviours of this apprenticeship standard. DCG assessors will check your job description and advise accordingly.

In addition, you should have at least one of the following:

- A Level 3 qualification with an overall grade equivalent of Merit. This could be a Level 3 qualification in a construction-related field, three A-levels in relevant subjects or a Level 3 qualification in Engineering.
- Relevant full-time work/industrial experience of five years. If this work experience is not supported by education qualifications such as GCSEs, then a minimum proficiency in Maths and English at Level 2 needs to be evidenced.

Offers of a place on the course are dependent on your achieved qualifications and a successful interview.

## WHAT WILL YOU LEARN?

This apprenticeship requires you to achieve either the HNC in Construction Management (Design and Build Technician Pathway) or the HNC in Modern Methods of Construction. (See pages 47-48 for more information.)

During your apprenticeship, you will need to achieve knowledge and skills relating to:

- Client requirements
- Health and safety
- Sustainability
- Construction technology
- Development of designs
- Design documentation
- Monitoring compliance
- Monitoring costs

You will also be expected to demonstrate behaviours such as:

- Professional judgement
- Commitment to a code of ethics
- Continuing professional development
- Commitment to equality and diversity
- Effective communication
- Working in teams
- Demonstrating innovation

You will need to achieve English and Maths at Level 2 before taking your End Point Assessment and this will be included in your Level 4 qualification.

See our website for further details of the knowledge, skills and behaviours required.

## HOW WILL YOU LEARN?

The apprenticeship entails a combination of work-based learning with the help of an assessor and learning at the College by completing the HNC on a part-time basis.

## HOW WILL YOU BE ASSESSED?

Once you have achieved the HNC and Level 2 English and Maths, completed a digital portfolio and satisfied the off-the-job training requirements, an End Point Assessment (EPA) will be delivered in the following order:

- Online Test
- Project
- Professional Discussion

For the assessment of the HNC qualification, see pages 47-48.

## WHERE NEXT?

Completing this apprenticeship will pave the way to more senior roles such as:

- Construction design and build technician
- Design and build co-ordinator
- Construction design manager
- Construction contracts manager
- Construction manager
- Construction project manager

You could also progress to a Level 5 HND, a BSc/BEng degree or a Level 6 Degree Apprenticeship in a related discipline, drawing on the broad knowledge base you will have gained from this apprenticeship.

We encourage you to join the Chartered Institute of Building (CIOB) at student membership level during your studies. The apprenticeship could lead to you gaining chartered status and further qualifications through the CIOB or the Royal Institute of British Architects (RIBA), with the potential for moving into a project director role.



# Higher Apprenticeship – Construction Quantity Surveying Technician

Level 4

Number of years: 3

Location: **The Roundhouse**

**Aimed at professionals whose role involves monitoring and controlling costs and contracts on construction projects, this Higher Apprenticeship is an excellent route to more senior positions and greater earning potential.**

## WHO IS THIS COURSE FOR?

Typical job roles associated with this apprenticeship can include assistant quantity surveyor, assistant construction surveyor, quantity surveying technician, assistant cost engineer or assistant cost analyst. Such roles could be based on sites or in offices.

As part of your apprenticeship, you will complete the HNC in Construction Management (Construction Design and Build Technician pathway). See page 47 for further information.

The programme includes the knowledge, skills and behaviours typically required to achieve Technician status – or the equivalent – with the industry's recognised professional bodies. The final assessment process will typically be partly representative of the review process required for professional registration.

The duration for this apprenticeship is usually three years but this will depend upon your previous experience and your access to opportunities to gain the full range of competence.

## ENTRY REQUIREMENTS

You need to be highly motivated and working in the construction industry. Your job role and responsibilities should allow you to provide evidence for the knowledge, skills and behaviours of this apprenticeship standard. DCG assessors will check your job description and advise accordingly.

In addition, you should have at least one of the following:

- A Level 3 qualification with an overall grade equivalent of Merit. This could be a Level 3 qualification in a construction-related field, three A-levels in relevant subjects or a Level 3 Engineering qualification.
- Relevant full-time work/industrial experience of five years. If this work experience is not supported by education qualifications such as GCSEs, then a minimum proficiency in Maths and English at Level 2 needs to be evidenced.

Offers of a place on the course are dependent on your achieved qualifications and a successful interview.

## WHAT WILL YOU LEARN?

This apprenticeship requires you to achieve the HNC in Construction Management (Construction Design and Build Technician pathway). See page 47 for more information.

You will develop knowledge and skills in:

- Health and safety
- Sustainability
- Construction technology
- Contracts
- Procurement
- Cost control
- Financial reporting
- Administration

You will also be expected to demonstrate behaviours such as:

- Commitment to a code of ethics
- Continuing professional development
- Using your own knowledge and expertise to help others when requested
- Commitment to equality and diversity
- Effective communication
- Conflict avoidance
- Working in teams
- Demonstrating innovation

You will need to achieve English and Maths at Level 2 before taking your End Point Assessment and this will be included in your Level 4 qualification.

See our website for further details of the knowledge, skills and behaviours required.

## HOW WILL YOU LEARN?

The apprenticeship entails a combination of work-based learning with the help of an assessor and learning at the College by completing the HNC on a part-time basis.

## WHAT WILL YOU NEED TO BRING WITH YOU?

You need safety boots and Personal Protective Equipment, such as a hard hat and overalls, which should be supplied by your employer. You will need to purchase a scientific calculator and technical drawing equipment. For voice-over PowerPoint presentations, you will need access to a microphone.

You will also need access to a computer or laptop with Internet, Windows 7 Operating System or above, Microsoft Office 2010 or above, and the ability to run Revit or AutoCAD Architecture which can be downloaded for free.

The purchase of appropriate books and e-books is encouraged and guidance on which books to purchase will be given by subject specialists.

## HOW WILL YOU BE ASSESSED?

Once you have achieved the HNC and Level 2 English and Maths, completed a digital portfolio and satisfied the off-the-job training requirements, an End Point Assessment (EPA) will take place which will be delivered in the following order:

- Online Test
- Project
- Professional Discussion

For the assessment of the HNC, please see page 47.

## WHERE NEXT?

Completing this apprenticeship standard paves the way to securing a position such as:

- Quantity surveyor
- Construction surveyor
- Cost engineer
- Cost analyst

You could also progress to a Level 5 HND, a BSc/BEng degree or a Level 6 Degree Apprenticeship in a related discipline, drawing on the broad knowledge base you will have gained from this apprenticeship.

We encourage you to join the CIOB at student membership level during your studies.



# Higher Apprenticeship – Construction Site Supervisor

Level 4

Number of years: 3

Location: The Roundhouse

**Our Higher Apprenticeship is an ideal choice if your job entails supervising specialist contractors and workers on construction projects. It leads to a HNC qualification, giving you a strong platform for promotion and career advancement.**

## WHO IS THIS COURSE FOR?

Typical job roles associated with this apprenticeship can include assistant construction site supervisor, assistant site manager or assistant project manager in the construction and built environment sector. In the case of small and medium-sized construction companies, the roles are likely to include site manager or site supervisor. Such positions are generally based on construction sites with occasional time in offices.

As part of your apprenticeship, you will complete the HNC in Construction Management (Construction Site Supervisor Pathway). See page 47 for more information.

The programme includes the knowledge, skills and behaviours typically required to achieve Technician status – or the equivalent – with the industry's recognised professional bodies. The final assessment process will typically be partly representative of the review process required for professional registration.

The duration for this apprenticeship is usually three years but this will depend upon your previous experience and your access to opportunities to gain the full range of competence.

## ENTRY REQUIREMENTS

You need to be highly motivated and working in the construction industry. Your job role and responsibilities should allow you to provide evidence for the knowledge, skills and behaviours of this apprenticeship standard. DCG assessors will check your job description and advise accordingly.

In addition, you should have at least one of the following:

- A Level 3 qualification with an overall grade equivalent of Merit. This could be a Level 3 qualification in a construction-related field, three A-levels in relevant subjects or a Level 3 Engineering qualification.
- Relevant full-time work/industrial experience of five years. If this work experience is not supported by education qualifications such as GCSEs, then a minimum proficiency in Maths and English at Level 2 needs to be evidenced.

Offers of a place on the course are dependent on your achieved qualifications and a successful interview.

## WHAT WILL YOU LEARN?

This apprenticeship requires you to achieve the HNC in Construction Management (Construction Site Supervisor Pathway). See page 47 for more information.

You will develop knowledge and skills in:

- Construction management
- Planning and organising work
- Monitoring quality
- Monitoring costs
- Health and safety
- Sustainability
- Construction technology
- Project management

You will also be expected to demonstrate behaviours such as:

- Professional judgement
- Commitment to a code of ethics
- Continuing professional development
- Using your own knowledge and expertise to help others when requested
- Commitment to equality and diversity
- Effective communication
- Working in teams
- Demonstrating innovation

You will need to achieve English and Maths at Level 2 before taking your End Point Assessment and this will be included in your Level 4 qualification.

## HOW WILL YOU LEARN?

The apprenticeship entails a combination of work-based learning with the help of an assessor and learning at the College by completing the HNC on a part-time basis.

## WHAT WILL YOU NEED TO BRING WITH YOU?

You need safety boots and Personal Protective Equipment, such as a hard hat and overalls, which should be supplied by your employer. You will need to purchase a scientific calculator and technical drawing equipment. For voice-over PowerPoint presentations, you will need access to a microphone.

You will also need access to a computer or laptop with Internet, Windows 7 Operating System or above, Microsoft Office 2010 or above, and the ability to run Revit or AutoCAD Architecture which can be downloaded for free.

The purchase of appropriate books and e-books is encouraged and guidance on which books to purchase will be given by subject specialists.

## HOW WILL YOU BE ASSESSED?

Once you have achieved the HNC and Level 2 English and Maths, completed a digital portfolio and satisfied the off-the-job training requirements, an End Point Assessment will take place which will be delivered in the following order:

- Online test
- Project
- Professional discussion

For the assessment of the HNC, please see page 47.

## WHERE NEXT?

Completing this apprenticeship standard paves the way to securing a position such as:

- Assistant construction site supervisor
- Assistant project manager
- Assistant health and safety manager
- Construction site supervisor
- Construction site manager
- Project manager

You could also progress to a Level 5 HND, a BSc/BEng degree or a Level 6 Degree Apprenticeship in a related discipline, drawing on the broad knowledge base you will have gained from this apprenticeship.

We encourage you to join the CIOB at student membership level during your studies.

# PUBLIC SERVICES, SECURITY AND OFFENDER MANAGEMENT

If you are looking for a role where you can make a real difference to society, DCG will help you prepare for a worthwhile and challenging future within the criminal justice system.

Our Foundation and Honours Degrees could give you a head start in some of the most rewarding and demanding walks of life – from the police, probation and prison services to security work and victim support. You will explore the issues and practicalities involved in the management and rehabilitation of offenders as well as latest developments within the security industry.

Alongside your academic knowledge, you will also enhance your communication, problem-solving, teamwork and leadership skills.

The teaching team in our Public and Security Services Academy has vast experience as well as an excellent network of contacts. You will be taught by lecturers who have had careers within the uniformed public services such as the police, prison service and army and who can relate security and offender management to a diverse range of scenarios.

Leading professionals will also contribute to your learning through guest lectures and give you a real insight into the challenges facing these important sectors today.



The Foundation Degree Criminal Justice (Security and Offender Management) (FdSc) and the BA (Hons) Security and Offender Management (Top Up) are delivered in partnership with and awarded by the University of Derby. Students will receive a University of Derby Certificate and will have the opportunity to join the University's Alumni Network on completion of their programme.

In partnership with



# Foundation Degree Criminal Justice (Security and Offender Management) (FdSc)

Level 5

Number of years: 2

Location: Broomfield Hall

UCAS code: L313

**If you're keen to pursue or advance a career in the criminal justice agencies of the police, prison or probation service, this worthwhile Foundation Degree will give you a sound knowledge base for success.**

## WHO IS THIS COURSE FOR?

Grounded in real-world practice, our two-year Foundation Degree covers some of the most pressing issues facing our society today and sets you up for a hugely rewarding career.

Initially you will review youth crime and justice, criminological theory and victimology before turning your focus to criminology, professional practice and applied research.

In Year 2, topics broaden and build on specialist knowledge, with units such as offender management and substance misuse, penology, and policing and society. In the final semester, you will explore crime and procedure, research methods and offender management.

The FdSc forms part of the three-year Offender Management degree programme at DCG and is delivered at Broomfield Hall. The qualification is awarded by the University of Derby.

Please note that, from September 2025, this programme is set to be designated as a Higher Technical Qualification (HTQ). HTQs are quality marked by the Institute for Apprenticeships and Technical Education (IfATE) to indicate their alignment to employer-led occupational standards.

## ENTRY REQUIREMENTS

You need to be aged 18 or over at the beginning of the course. All applicants will be invited to complete a phone interview or site visit at which interviews will take place to discuss their qualifications, experience and any other related issues.

You should have one of the following:

- 64 UCAS points, with at least 32 preferably coming from a related subject such as Public Services, Law or Sociology
- Access to HE qualifications

You will also need:

- GCSE English at grades 9-4 (A\* - C)
- An appropriate competency in maths for higher level study
- A Disclosure and Barring Service (DBS) check

All applicants are subject to approval from the University of Derby.

## WHAT WILL YOU LEARN?

Modules are:

### Year 1

- Applied Victimology
- Youth, Crime and Justice
- Criminological Theory
- Introduction to Criminology
- Applied Research in Criminology
- Professional Practice

### Year 2

- Social Research Methods
- Penology, Punishment and Rehabilitation
- Offender Management and Substance Misuse
- Offender Management
- Crime and Procedure
- Policing and Society

You will be expected to undertake a relevant work placement for a minimum of 72 hours each academic year.

## HOW WILL YOU LEARN?

You will learn on-site at Broomfield Hall Higher Education Centre. Although you may only be in classes on three days per week, there is an expectation that you will spend the equivalent of a further three days in independent study and undertake a period of mandatory work placement to support your studies. This may involve you being invited in on non-timetabled days or weekends to fulfil some elements of the course. Please note that classes will take place over traditional half-term holidays that fall within the identified semester weeks.

Attendance is expected to be over 90%. This is linked to Student Finance England maintenance loans which will be put at risk if you drop below this level.

The core higher education academic year will be for a duration of 33 weeks for the purposes of maintenance loans. You will receive a proportion of this time as direct delivery, with any additional time – as deemed appropriate by the programme team and the awarding body – for activities such as induction, tutorials, research, directed study and reading weeks. The direct delivery time for this course will be 30 weeks.

## WHAT WILL YOU NEED TO BRING WITH YOU?

It is advisable that you have access to your own laptop for research and assignment writing. In order to access work placement opportunities, you will need a DBS check, the cost of which will be included as part of your course fees.

Additional trips and visits are usually provided as part of your study programme. However, there may be social or team building opportunities which would incur additional costs of around £15-20. In previous years students have paid around £200 for a three-day visit to London, taking in the Old Bailey and Royal Courts of Justice.

## HOW WILL YOU BE ASSESSED?

You will be assessed using a variety of methods which may include practical and theory exams, reports and assignments, presentations and practical work. The assessment methods are designed to review your understanding and knowledge relevant to the sector.

## WHERE NEXT?

The Foundation Degree provides the perfect progression platform for further study on the BA (Hons) Security and Offender Management at DCG (see overleaf). Opportunities to study other top-up degrees at the University of Derby are also available, subject to approval.

You may also wish to progress to employment within the security industry, custodial care, probation service, reservist forces, police specials, the criminal justice sector or charitable organisations.

The course will run with a minimum of eight students. In 2023-24 we had 15 students enrolled on this programme.

# BA (Hons) Security and Offender Management (Top Up)

Level 6

Number of years: 1

Location: Broomfield Hall

UCAS code: L312

**Higher levels of professionalism, specialist skills and up-to-date knowledge are expected from those working in the criminal justice sector today. With a focus on real-world learning, our top-up programme helps you meet those expectations and leads to a highly regarded Honours Degree.**

## WHO IS THIS COURSE FOR?

This one-year top-up degree has been designed in response to the expanding nature of work in the criminal justice agencies in the public and private sectors, including the police, prison and probation services.

It is a unique programme where you will not only learn about the significance of Her Majesty's Prison and Probation Service (HMPPS) but also gain an understanding of how the service, working with the police, ensures public protection and security.

This includes the management of violent, sexual and mentally disordered offenders both within the custodial environment and the community, and the provision of interventions to reduce re-offending and lower recidivism rates.

The learning outcomes seek to improve your employability by developing your critical thinking and analytical skills, your scholarship and your intellectual skills – all of which are transferable. We encourage a focus on independent learning to undertake real-life projects. All these skills will equip you for a wide range of careers in the security and offender management field.

The qualification is awarded by the University of Derby.

## ENTRY REQUIREMENTS

All applicants will be invited to an interview to discuss their qualifications, experience and any other related issues.

You should have one of the following:

- A Foundation Degree in a relevant subject such as Criminal Justice or Public Services – you must have attained 120 credits at Level 5
- A HND in Public Services or the equivalent

You will also need GCSE English and Maths at grades 9-4 (A\*- C) or the equivalent.

Students wishing to progress from any other Level 5 qualification in a relevant subject will be considered on their own merit following a full mapping exercise.

You should have confidence in presenting to new groups of people and leading activities and should have a desire to work with the community.

All applicants are subject to approval from the University of Derby.

## WHAT WILL YOU LEARN?

Modules include:

- Mentally Disordered Offenders
- Security, Public Protection and Safer Custody Arrangements
- Interventions to Reduce Offending
- Sexual Violence, Exploitation and Abuse
- Independent Research Project (Dissertation)

It is expected that you will undertake around 72 hours of work experience to enhance your overall employability skills.

## HOW WILL YOU LEARN?

You will learn on-site at Broomfield Hall Higher Education Centre. This is a full-time course, with around two days per week scheduled for taught sessions including lectures and seminars. Therefore it is expected that you will use the remainder of the time for your independent study, research and work experience.

Your attendance is expected to be over 90%. This is linked to Student Finance England maintenance loans which will be put at risk if you drop below this level.

The core higher education academic year will be for a duration of 33 weeks for the purposes of maintenance loans. You will receive a proportion of this time as direct delivery, with any additional time – as deemed appropriate by the programme team and the awarding body – for activities such as induction, tutorials, research, directed study and reading weeks. The direct delivery time for this course will be 30 weeks.

## WHAT WILL YOU NEED TO BRING WITH YOU?

Having your own laptop is essential to aid your independent study and assignment work.

Additional trips and visits are usually provided as part of your study programme. However, there may be social or team building opportunities which would incur additional costs of around £15-20. In previous years, students have paid £200 for a two-night trip to the Royal Courts of Justice and Old Bailey in London.

## HOW WILL YOU BE ASSESSED?

The degree will be assessed through a range of assignments and exams which include essays, presentations, case studies, assessment reports, independent research projects and practical activities.

## WHERE NEXT?

You could choose to extend your studies and progress to other higher education provision such as a postgraduate course, provided that you meet the minimum threshold for that particular programme.

Alternatively, you may wish to seek employment in security and offender management related careers, such as the police, probation and prison services, social work or youth offending agencies. Some of these fields may require further study. The BA (Hons) (Top Up) meets the entry criteria for the degree holder route for joining the police and probation services.

There is also the option of pursuing a career within the voluntary sector, working in areas such as the rehabilitation of offenders or with victims.

The course will run with a minimum of eight students. In 2023-24 we had 12 students enrolled on the programme.



# SPORT

Studying with Derby College Group (DCG) will help you shape up for an action-packed career in sports coaching, personal training or sports massage therapy. Our outstanding facilities, expert staff and impressive links with sports organisations will ensure you reach your personal best.

Our Foundation Degree Sport Coaching (FdA), run in association with the University of Derby, will equip you with the academic and vocational skills to become an effective professional coach in an arena where career opportunities are growing rapidly.

We also offer a Level 4 qualification for fitness professionals and, if you would like to specialise in working with injured athletes, the portfolio includes a specialist Certificate in Sports Massage Therapy too.

With Derby College Group, you will benefit from first-rate sports facilities. Our well-equipped sports centre and playing fields at Broomfield Hall are the ideal setting in which to hone your skills.

The enthusiastic and dedicated teaching team in our Sport Academy boasts wide-ranging coaching and fitness training experience – plus excellent partnerships with sports clubs, fitness clubs, recreation centres and schools – to help you make the most of your studies.



The Foundation Degree Sport Coaching, Performance and Education (FdA) is delivered in partnership with and awarded by the University of Derby. Students will receive a University of Derby Foundation Degree Certificate and will have the opportunity to join the University's Alumni Network on completion of their programme.

In partnership with



# Certificate in Advanced Personal Training

Level 4

Number of years: **1 (full time) and 18 weeks (part time)**

Location: **Broomfield Hall**

**Demands on today's personal trainers are rapidly evolving in line with the needs of the clients they serve. Qualifications like the Certificate in Advanced Personal Training are becoming increasingly important to keep ahead of the game.**

## WHO IS THIS COURSE FOR?

Our Level 4 Certificate will help set you apart as a personal training professional. CIMSPA-endorsed, it builds on the knowledge you have gained on a Level 3 course so that you can apply new techniques to support, enhance and manage a client's journey while helping them to achieve their goals.

The qualification will serve as an impressive addition to your CV at a time when the personal training industry has never been more competitive. It will help you become a highly successful, results-driven professional who can confidently differentiate the services you offer to provide an ethical service and build a successful business.

It will also ensure you take a more scientific and evidence-based approach to programming, training, monitoring and managing clients which translates into better client attraction and retention.

The full-time Certificate programme includes a number of additional qualifications added to its delivery platform. These additional qualifications are also available as standalone part-time evening classes.

See our website for the start dates of the part-time programme.

## ENTRY REQUIREMENTS

You must hold a Level 3 Diploma in Personal Training – or an equivalent qualification – which should be evidenced prior to starting the course.

You should also be able to apply factual and theoretical knowledge and to use a range of cognitive and practical skills to generate specific solutions for personal training clients. This will require you to work in predictable and unpredictable situations using your knowledge, skills and competencies.

You need to have achieved English and Maths GCSE at grade 4 or above.

## WHAT WILL YOU LEARN?

This qualification provides you with the enhanced knowledge and skills to fully understand your clients, utilise an evidence-based approach to programming and develop a successful and sustainable personal training business. It covers:

- research, evaluation and use of credible research and information to inform personal training and coaching practice
- integration and application of technologies, digital and social media into personal training practice to support, enhance and manage the client journey
- application of behaviour change and communication techniques to support, enhance and manage the client journey
- assessment, performance analysis and evaluation to support, enhance and manage the client journey
- design and application of long-term periodisation, planning, coaching and evaluation to optimise client success

The study programme will also include tutorials, enrichment activities, a work placement totalling 108 hours, designing exercise programmes for older adults, exploring nutrition for exercise, and instructing studio cycling.

As this is a Level 4 qualification, the academic expectation is equivalent to that of the first year of a degree programme. You will need to take advantage of the services of our HE Study Coaches to help with your theoretical writing and academic research.

## HOW WILL YOU LEARN?

This course will be delivered on-site at Broomfield Hall but the personal training aspects of the programme will take place in a gym or appropriate fitness venue. You should expect to spend at least one day in a vocational setting, undertaking training with clients.

There are practical sessions in which you are expected to take part and others that you are expected to lead.

You are expected to maintain attendance of over 95% throughout the year.

## WHAT WILL YOU NEED TO BRING WITH YOU?

You will benefit from having a tablet or laptop to aid your studies.

You are expected to wear black tops – such as T-shirts, jumpers or hoodies – when in class and when representing DCG during practical sessions. You are free to wear what you choose on your lower half, providing it is suitable for the activity being undertaken.

There are DCG-branded HE-specific kit options to purchase if you wish to do so. This is not, however, mandatory: we merely expect compliance with our colour code.

## HOW WILL YOU BE ASSESSED?

You will be assessed via:

- case studies
- presentations
- observations
- viva

## WHERE NEXT?

By completing this qualification, you will be able to enhance your employment credibility within the fitness industry.

You can also consider progression to the:

- Foundation Degree Sport Coaching, Performance and Education
- Level 3 Diploma in Sports Massage Therapy
- Level 2 Award in Alcohol Awareness
- Level 2 Award in Smoking Cessation
- Level 2 Award in Mental Health Awareness

A minimum of five candidates must be enrolled for this course to start.

# Certificate in Sports Massage Therapy

Level 4

Number of years: **24 weeks (full time) or 18 weeks (part time)**

Location: **Broomfield Hall**

**Interested in furthering your skills in sports massage? This is your opportunity to gain a respected qualification which enables you to work with injured clients to professional standards.**

## WHO IS THIS COURSE FOR?

If you already have a Level 3 Sports Massage qualification, this CIMSPA-endorsed course takes your skills to the next stage. It builds on the knowledge you have already gained by introducing you to the skills required to treat and correct common patterns of dysfunction and pre-diagnosed injuries.

The course is offered as a day-time full-time option over 24 weeks or as an evening part-time option over 18 weeks. The full-time Certificate programme includes a number of additional qualifications added to its delivery platform. These additional qualifications are also available as standalone part-time evening classes. Please see our website for starting dates.

## ENTRY REQUIREMENTS

You must have completed a Level 3 Diploma in Sports Massage Therapy.

It is also recommended that you have:

- good customer service and communication skills
- excellent personal hygiene, appearance and professional demeanour
- experience working with regular clients
- English and Maths GCSE at grade C/4 or higher

## WHAT WILL YOU LEARN?

- Treatment modalities to support soft tissue repair
- Conducting subjective and objective physical assessments
- Providing sports massage techniques to prevent and manage injury

## HOW WILL YOU LEARN?

This highly practical course will be delivered on-site at Broomfield Hall.

You are expected to work with clients over a prolonged period of time, evidencing your treatments to specific areas of the body. A significant proportion of the course should be conducted independently away from the classroom.

## WHAT WILL YOU NEED TO BRING WITH YOU?

You may wish to purchase your own massage equipment, fold-away beds and oils in order to practise. This is not, however, a requirement of the course.

## HOW WILL YOU BE ASSESSED?

This qualification will be delivered, assessed and assured in line with:

- the CNHC code of conduct, ethics and performance
- Skills for Health's QCF assessment principles

A range of practical and knowledge-based assessments will be arranged, including vocational experience and observation of practice.

Assessments are carried out over a number of observations of your work with clients, plus additional worksheets and critical evaluation of your practice.

You will be expected to provide a client to work on for your scenario-based practical assessments.

## WHERE NEXT?

After completing this qualification, you will be able to gain employment and obtain insurance to work as a sports massage therapist.

You can also consider progression to the:

- Foundation Degree Sport Coaching, Performance and Education
- Level 2 Award in Gym Instruction
- Level 2 Award in Alcohol Awareness
- Level 2 Award in Smoking Cessation
- Level 2 Award in Mental Health Awareness
- Level 2 Award in Understanding Nutrition, Performance and Healthy Eating

A minimum of five candidates must be enrolled for this course to start.



# Foundation Degree Sport Coaching, Performance and Education (FdA)

Level 5

Number of years: 2

Location: Broomfield Hall

UCAS code: C610

**Offering opportunities to coach different sports at different levels, our Foundation Degree will help you build a unique blend of skills and knowledge for a fulfilling career in coaching, teaching or performance analysis.**

## WHO IS THIS COURSE FOR?

Excellent coaches are needed across all areas of sport participation. If you are up for the challenge, this Foundation Degree will equip you to deliver progressive coaching practices, encourage athlete potential and prepare sports people for competition.

As well as developing your knowledge and understanding of sport coaching in specified contexts, you will learn how to analyse scientific data and convert it into coaching and training regimes. Our theory-into-practice philosophy will not only enhance your coaching knowledge but also build your vocational skills.

Whether your sport of interest is cycling, golf, football, basketball or athletics, you can focus your studies on areas which particularly interest you. Opportunities around sport coaching at all levels will be incorporated into your study programme, including working at elite levels and with sports clubs in the local community.

The Foundation Degree will also serve as an advanced coaching programme if you wish to undertake coaching opportunities with sports clubs and National Governing Bodies.

The qualification is awarded by the University of Derby.

## ENTRY REQUIREMENTS

You will need:

- 64 UCAS points
- GCSE English Language and Maths at grade C (4) or above

64 points equates to MPP on a Level 3 Extended Diploma or MM on a Level 3 Diploma. You will require DDE on three A-levels or CC from two A-levels.

We will accept up to 20 points towards the total from Level 3 qualifications such as AS Levels (where those AS Levels are not taken on to A2 Level), the Extended Project or Music qualifications. We also accept the Access to HE Diploma. We do not accept points from Key Skills Level 3.

You will be interviewed to ensure the course is suitable for you. This will most likely be carried out via telephone or at an open day event on campus.

## WHAT WILL YOU LEARN?

### Year 1

- The Apprentice: understanding your coaching profile
- Assistant Coach: preparation and planning
- Club Coach: coaching practice

### Year 2

- The Apprentice: developing your coaching profile
- Senior Coach: analysing and performance
- Head Coach: managing the coaching environment

## HOW WILL YOU LEARN?

You will learn on-site at Broomfield Hall – through a wide range of lectures, practical work, laboratory work and hands-on experience – as well as working in sports centres. The course includes approximately three days a week of contact time to allow time for independent study and coaching placements.

Our highly qualified teaching staff have excellent academic and practical backgrounds in coaching – from elite level England basketball coaches to grassroots local league coaches. Our practical-based approach to teaching means you will gain wide-ranging skills you can use in your career to cement your theoretical knowledge. There are practical sessions in which you will be expected to take part and others that you are expected to lead.

The course design allows you to pick themes of interest to you for the basis of your assessments. This makes your studies specific to you and your career pathway.

You will have the opportunity to go on field trips so you can put your learning into practice. Field trips in the past have included visits to a Physiotherapy and Rehabilitation Centre, a Biomechanics Lab and professional sports clubs to observe coaching in the natural environment and to look at the analysis methods used.

We also offer you the chance to gain work experience as part of your course by delivering coaching sessions in a further education setting. This is a great way to develop your skills and build the experience employers are looking for. We have extensive links with schools and sports clubs in the local community to develop your coaching experience and enhance your CV.

Your attendance is expected to be over 90%. This is linked to Student Finance England maintenance loans which will be put at risk if you drop below this level.

The core higher education academic year will be for a duration of 33 weeks for the purposes of maintenance loans. You will receive a proportion of this time as direct delivery, with any additional time – as deemed appropriate by the programme team and the awarding body – for activities such as induction, tutorials, research, directed study and reading weeks. The direct delivery time for this course will be 30 weeks.

## WHAT WILL YOU NEED TO BRING WITH YOU?

Although it is not a prerequisite, it is helpful for you to have your own laptop/tablet to enable you to meet the required independent study demands. Practical sports attire is required in some sessions and it is expected that you will provide your own. You will also have the opportunity to purchase a departmental uniform to wear during your coaching sessions.

## HOW WILL YOU BE ASSESSED?

You will be assessed through a variety of assignments including laboratory-based work, reports, presentations, coaching analysis, essays and practical work. There are no formal exams set for this qualification. External examiners have praised our assessments for their innovative approach.

## WHERE NEXT?

On successful completion of the Foundation Degree, you will have the opportunity to join a final-year top-up programme and achieve a full BA (Hons) Sport Coaching and Development, Sport and Education or Analysis and Coaching Performance at the University of Derby. You could also consider further study within teaching – particularly primary education.

Coaches are needed at every level of sport participation. Jobs are available in schools, national governing bodies, councils and sports clubs. You could also consider setting up your own coaching company.

A minimum of 12 candidates must be enrolled for this course to start.

# TEACHER TRAINING, COACHING AND MENTORING

Planning to change your career to teaching? Already working in education and need to update your practice? Want to develop your assessment skills? Keen to become a Higher Level Teaching Assistant?

Derby College Group's Professional Education, Training and Development Academy could put you on the pathway to achieving your ambitions. Our high-calibre, inclusive, relevant and up-to-date programmes lead to recognised qualifications that meet latest professional standards and offer clear progression routes to success in a worthwhile educational career.

We strive for excellence in delivering first-rate lessons, support and feedback as well as continuous professional development. You will have access to high-quality resources, library and career development services.

Some of our programmes are run in collaboration with the University of Derby. An Ofsted inspection rated the University's Further Education and Skills teacher training provision – in which we are a main partner – as 'outstanding'.



Our trainees consistently exit as 'outstanding' practitioners. Employment data is very positive and most trainees secure relevant teaching jobs or enhance their role in the sector.

Our cohorts come from a broad range of contexts across secondary education, further education and non-mainstream provision, allowing for a rich sharing of experiences to enhance your learning opportunities.

We have a friendly and experienced teaching team who will inspire you through a blend of classroom-based learning, research, tutorials, lesson observations and insights into the latest learning technologies. Throughout, you will have the chance to apply theory to your own practice.



The Certificate in Education Post 14 (Education and Training) (Cert Ed) and the Postgraduate Certificate in Education Post 14 (Education and Training) (PGCE) are delivered in partnership with and awarded by the University of Derby. Students will receive a University of Derby Certificate and will have the opportunity to join the University's Alumni Network on completion of their programme.

In partnership with



# Certificate in Education Post-14 (Education and Training) (Cert Ed)

Level 5

Number of years: 2

Location: **The Roundhouse**

**Keen to become a fully qualified teacher in the FE and Skills sector? Teaching KS4 in a school? Pursuing a teaching career with a college, prison, training provider or voluntary organisation? This course will advance your career.**

## WHO IS THIS COURSE FOR?

The Cert Ed is ideal if you are seeking a solid foundation in all aspects of teaching in preparation for a highly successful career in education. It is an in-service part-time route to a full teacher qualification, offered in partnership with the University of Derby – giving you an excellent ‘earn as you learn’ route to achieve your goals.

The programme is designed to develop your skills, knowledge and professional behaviours so that you become a highly effective teacher. You will improve your knowledge of how people learn, how to plan effective and engaging teaching sessions and how to assess – both during the session and through summative assessment. You will be using theoretical underpinning knowledge to continuously improve your professional practice.

You will explore the context and the design of your curriculum, gaining a solid understanding of the external pressures influencing it. You will also have an opportunity to pursue a specific interest in the second year, such as Effective Classroom Management.

There are also pathway modules in Supporting Learners with Disabilities, Teaching English up to Level 2 in the Post-14 Sector, Training to Teach Maths up to Level 2 in the Post-14 Sector, Teaching Sport in the Post-14 Sector, and Teaching STEM Engineering. Further information on pathways will be available at the DCG information session.

The qualification is awarded by the University of Derby.

## ENTRY REQUIREMENTS

All applicants must attend a 1-1 video interview to discuss their qualifications, experience, motivation and aspirations, and to obtain an application pack.

You will need to provide evidence of:

- at least a Level 3 qualification in a subject relevant to what you teach
- an ETF-recognised Level 2 qualification in English
- an ETF-recognised Level 2 qualification in Maths
- access to a minimum of 75 hours teaching (in a full teaching role) each year

Recognition of Prior Learning for some modules in Year 1 may be available for applicants with an existing Level 4 PTLLS or CTLLS/Certificate in Education and Training qualification.

All applicants are subject to approval from the University of Derby.

## WHAT WILL YOU LEARN?

You will study a range of modules over the two years which will include:

- Introduction to the FE Teaching Role (20 credits)
- Teaching Practice 1 (20 credits)
- Applied Learning Theories (20 credits)
- Teaching Practice 2 (20 credits)
- The Curriculum Explored (20 credits)
- Core/Specialist pathway – such as Effective Classroom Management (or, for those on a Specialist Pathway, a specialist module in Teaching Mathematics, English, Sport, Learners with Disabilities, Science or Engineering)

## HOW WILL YOU LEARN?

All sessions take place on-site at the Roundhouse and are classroom based. The course is delivered using innovative learning methods, technology-enhanced resources and one-to-one observations of you in your own practice.

Throughout, you will experience a wide range of teaching techniques and will be both supported and encouraged to experiment with these techniques within your own classroom so that you exit the programme as a creative and innovative practitioner.

## HOW WILL YOU BE ASSESSED?

Assessment is through coursework and an exciting range of assessment methods is used. These include observations of your teaching practice, self-evaluation, reflective tasks, written assignments, individual and group presentations, and academic poster presentations. All assessment methods have been designed to focus on skills specific to the professional teacher while incorporating key transferable skills.

## WHERE NEXT?

Upon successful completion of this Level 5 programme, you will be equipped to become an effective teacher in post-14 education. The course offers a foundation for professional development and enables you to apply for professional formation (QTLS) which is now equated with Qualified Teacher Status (QTS).

This is only the beginning of a rich and rewarding career in education. With further experience you can progress your role into educational management and leadership.

Some of you will want to achieve an assessor qualification, especially if you are teaching apprentices or undertaking workshop/workplace training.

This course will only run with a minimum of 15 enrolments.

# Postgraduate Certificate in Education Post-14 (Education and Training) (PGCE)

Level 7

Number of years: 2

Location: **The Roundhouse**

**Are you a graduate aspiring to become a fully qualified teacher in the FE and Skills sector? Do you want a platform for Masters level study in education? Our PGCE gives you a solid foundation for a successful career in teaching.**

## WHO IS THIS COURSE FOR?

Aimed at students who already hold an Honours Degree, our PGCE is an in-service part-time route to a full teacher qualification, offered in partnership with the University of Derby. It enables you to earn as you learn on the way to qualification.

The PGCE equips you with the skills, knowledge and professional behaviours to enable you to become a highly effective and fully qualified teacher, whether in the FE and Skills sector, teaching KS4 in a school, or pursuing a career in a college or prison, with a training provider or in the voluntary sector.

You will improve your knowledge of how people learn, how to plan effective and engaging teaching sessions and how to assess – both during the session and through summative assessment. You will be using theoretical underpinning knowledge to continuously improve your professional practice.

You will explore the context and the design of your curriculum, gaining a solid understanding of the external pressures influencing it. You will also have an opportunity to pursue a specific interest in the second year, such as Effective Classroom Management.

There are also pathway modules in Supporting Learners with Disabilities, Teaching English up to Level 2 in the Post-14 Sector, Training to Teach Maths up to Level 2 in the Post-14 Sector, Teaching Sport in the Post-14 Sector, and Teaching STEM Engineering. Further information on pathways will be available at the DCG information session.

The qualification is awarded by the University of Derby.

## ENTRY REQUIREMENTS

All applicants must attend a 1-1 video interview for further details and to obtain an application pack. This will be informal, and we will discuss your qualifications, experience, motivation and aspirations.

You need evidence of:

- an Honours Degree (class 2:2 or above) in a subject relevant to what you teach (If your degree is a lower classification you may be eligible for the Certificate in Education programme)
- an ETF-recognised Level 2 qualification in English
- an ETF-recognised Level 2 qualification in Maths
- access to a minimum of 75 hours teaching per year (in a full teaching role)

All applicants are subject to approval from the University of Derby.

## WHAT WILL YOU LEARN?

- Exploring the FE Teaching Role (20 credits)
- Professional Practice 1 (20 credits)
- Applied Learning Theories (20 credits)
- Professional Practice 2 (20 credits)
- The Curriculum Examined (20 credits)
- Core/Specialist Pathway: Examining Subject Pedagogy (20 credits)

Pathway modules include Teaching English (Literacy), Teaching Maths, Teaching STEM Engineering, Supporting Learners with Disabilities, Teaching Science, and Teaching Sport in the Post-14 Sector.

## HOW WILL YOU LEARN?

You will attend weekly classroom sessions at the Roundhouse. The course is delivered using innovative learning methods, technology-enhanced resources and one-to-one observations of you in your own practice.

Throughout, you will experience a wide range of teaching techniques and will be both supported and encouraged to experiment with these techniques within your own classroom so that you exit the programme as a creative and innovative practitioner.

## HOW WILL YOU BE ASSESSED?

Assessment is through coursework and an exciting range of assessment methods is used. These include observations of your teaching practice, self-evaluation, reflective tasks, written assignments, individual and group presentations, and poster presentations. All assessment methods have been designed to focus on skills specific to the professional teacher, while incorporating key transferable skills.

You are required to undertake research and write in an appropriate academic style, using Harvard Referencing systems. All assessments require you to apply theory to your own practice and you are expected to engage with academic research and learning theory in a manner commensurate with Masters-level study.

## WHERE NEXT?

Once you have achieved a full teaching qualification you can secure a teaching role in the post-14 sector as a qualified teacher. This course offers a foundation for professional development and enables you to apply for professional formation (QTLS) which is now equated with Qualified Teacher Status (QTS).

It also provides you with an ideal platform to advance straight to an MA ED. If you progress to the University of Derby, you will already have achieved 60 credits towards your Masters qualification.

Some of you may also want to achieve an assessor qualification, especially if you are teaching apprentices or undertaking workshop/workplace training.

The PGCE is only the beginning of a rich and rewarding career in education. With further experience you can progress your role into educational management and leadership.

This course will only run with a minimum of 15 enrolments.

# Certificate for Higher Level Teaching Assistants

## Level 4

Number of years: 1

Location: **The Roundhouse**

**If you're a qualified teaching assistant keen to progress to a HLTA role, choose this Level 4 programme for an excellent learning experience and a highly regarded qualification.**

### WHO IS THIS COURSE FOR?

Have you worked in learning support for a period of time? Are you passionate about your role in developing educational opportunities for future generations? Are you now supporting teachers and other professionals, perhaps delivering some planned lessons?

Would you like to develop your skills and knowledge further and be recognised for the hard work you already do? Do you wish to enhance your expertise in supporting learning and gain a professional qualification? Then the Higher Level Teaching Assistant (HLTA) Certificate is the course for you.

You will build knowledge and effective skills in handling the challenges that you are likely to encounter at school. Your school will secure additional high-quality assistance while the children and young people with whom you work will benefit from effective professional support to maximise their potential.

A qualification completed with Derby College Group sets you a cut above the rest. Our reputation for developing excellent teaching assistants is very good and our pass rate is 100% consistently.

### ENTRY REQUIREMENTS

You must be aged 19 or over and have evidence of:

- usually at least a grade C/4 in GCSE English and Maths
- employment and experience in a teaching assistant/learning support role – part time or full time – within a school or provider setting (EYFS is allowed)
- the full support of your head teacher/line manager – a supporting letter will be needed at interview stage
- significant experience in working as a teaching assistant with a range of children and young people
- capacity to attend College fortnightly for three hours in the evening
- confidence in using standard IT equipment
- ability to work at Level 4

### WHAT WILL YOU LEARN?

You will work towards your Level 4 qualification thematically studying the following units:

- Professional Knowledge and Development for Higher Level Teaching Assistants
- Child Development and Wellbeing
- Supporting Children and Young People with Special Educational Needs
- Promoting Children's and Young People's Positive Behaviour
- Working with Individuals and Groups of Learners
- Positive Working Relationships
- Curriculum Planning, Monitoring, Delivery and Assessment

### HOW WILL YOU LEARN?

You will develop knowledge, skills and professional behaviours holistically during this course, and use your experience and employment to practise what you learn. Your work in classrooms with children, young people or adults is critical in enabling you to apply theory to practice.

A Level 4 qualification requires you to engage in academic reading and writing and to adopt Harvard referencing systems. We will support you to develop or refresh your academic writing skills during your studies.

### HOW WILL YOU BE ASSESSED?

A range of assessment methods is used, including group presentations, group tasks, academic posters, written tasks, professional discussions, assessment of skills during observations of your practice in your school, reflective practice, and professional and personal development plans.

The assessment methods used are designed for you to experience what your learners may experience, and will build your academic skills, communication and confidence.

### WHERE NEXT?

Once you have completed the HLTA course, you can:

- progress in your current job role
- advance to a Foundation Degree (Teaching Assistants, Early Years, Children and Young People or SEND Pathway)
- develop a teaching career

There are also other opportunities and courses which you could consider:

- Level 2 Award in Specific Learning Difficulties
- Level 3 Certificate in Assessing Vocational Achievement
- Level 4 Award in Internal Quality Assurance
- Level 5 Specialist Certificate in Teaching Disabled Learners

For those teaching in the FE sector:

- Level 3 Award in Education and Training (14+)
- Level 5 Certificate in Education (14+)
- Level 7 PGCE (14+)

This course requires a minimum of 12 enrolments to run. You will be notified one week prior to the start date if the course is NOT going to run.

# Higher Apprenticeship – Learning and Skills Teacher

Level 5

Number of years: 2

Location: **The Roundhouse**

**DCG offers a well-established and innovative pathway to qualifying as a teacher in the Post-14 sector: a supportive and rigorous Higher Apprenticeship route.**

## WHO IS THIS COURSE FOR?

The apprentice teacher route gives you the opportunity to earn as you learn and to develop your professional practice in classroom, work-based and workshop settings.

You will build specific skills in:

- undertaking educational research and applying learning to practice
- generic teaching, learning and assessment knowledge, theory and skills, including promoting positive behaviours for learning
- subject pedagogy
- the professional behaviours of a teacher
- practising of safeguarding
- utilising digital technology

You will also develop transferable abilities in effective communication, reflective practice, improving resilience, stakeholder engagement and relationship building.

## ENTRY REQUIREMENTS

- A teacher apprenticeship contract – a minimum of 2.5 years to enable the End Point Assessment to take place following two years of learning
- Evidence of (at least) a Level 3 qualification in your own subject-specialism
- Evidence of an approved Level 2 qualification in English Language and Maths (or a commitment to achieve these prior to the End Point Assessment)
- A mentor in the organisation where you work to support your development

## WHAT WILL YOU LEARN?

To evidence the apprenticeship standard and become an outstanding teacher who has a positive impact on learners in the sector, you will work towards an agreed set of qualifications. You are also required to demonstrate:

- the nine professional duties
- the knowledge, skills and behaviours described in the occupational standards

In addition to taking mandatory qualifications, you may wish to enhance your studies by completing optional short courses in:

- Coaching and Mentoring
- Understanding Specific Learning Difficulties

## HOW WILL YOU LEARN?

You will have study time to work in your curriculum team and to attend College to work towards your qualifications, meet with your personal tutor, plan your own professional development and prepare for the End Point Assessment.

## HOW WILL YOU BE ASSESSED?

Apprentice teachers are assessed using varied methods, including assignments, collaborative presentations, poster presentations and reflections. Alongside this, there will be observations of your teaching practice conducted by expert tutors from our Teacher Training Academy or by your workplace mentor.

You will also have an End Point Assessment consisting of a lesson observation followed by a professional discussion carried out by an External End Point Assessor. A second professional discussion, supported by your portfolio of evidence, is again conducted by an External End Point Assessor.

Throughout, assessment is robust, meaningful and developmental.

## WHERE NEXT?

You could consider:

- QTLS: professional formation for the FE and Skills sector, equating to QTS in schools
- A permanent position as a teacher in Post-14 education, for example with schools, FE colleges, training providers and prison education
- A BA (Hons) Education Studies or Masters in Education (depending on your prior qualifications)

# Certificate in Professional Coaching Practice

Level 5

Number of years: 1

Location: **The Roundhouse**

**Do you have a passion for developing others in the workplace? Coaching is now recognised as a powerful strategy for developing individuals effectively – and this course will help you build on your skills.**

## WHO IS THIS COURSE FOR?

Our Level 5 Certificate in Professional Coaching Practice is an ideal qualification for people with responsibility for coaching. It covers planning and preparing specific learning and development opportunities and requires you to practise your coaching skills in the workplace while improving your understanding of the principles of professional coaching.

The course is also designed to support you to move into a development role or to start a career as a freelance coach.

On completion of your studies, you will be able to:

- understand the principles of professional coaching
- plan, prepare and deliver effective professional coaching
- reflect on professional coaching practice to improve your coaching capability
- assess your own skills, behaviours and knowledge as a coach
- provide evidence of your own development as a coach

## ENTRY REQUIREMENTS

All applicants must attend a bespoke information session and informal interview to discuss their qualifications, experience, workplace role, motivation and aspirations.

You need evidence of:

- a recognised Level 2 or equivalent qualification in English
- a Level 3 qualification and/or a demonstration of your ability to work at Level 5
- coaching as part of your workplace role: you must be able to undertake a minimum of 12 hours of formal and contracted coaching with supervision and support and be able to show how you have reflected on your performance
- the capacity to attend ten classroom-based learning sessions during the programme, take part in a minimum of two tutorials, and engage in a minimum of two workplace observations/supervision

## WHAT WILL YOU LEARN?

The mandatory units are:

- Principles of Professional Coaching
- Professional Coaching Practice

## HOW WILL YOU LEARN?

The course is delivered using a range of ten classroom-based sessions, two hours of supervision, and workplace observations. There is a key expectation that you will conduct independent study to enable you to learn and achieve.

## HOW WILL YOU BE ASSESSED?

Assessment is through coursework and an exciting range of assessment methods is used. These include observations of your coaching practice, self-evaluation, reflective tasks, written assignments, individual and group activities. All assessment methods have been designed to focus on skills specific to the professional coach, while incorporating key transferable skills.

Some assessments require you to apply theory to your own practice and you are expected to engage with academic research and learning theory.

## WHERE NEXT?

You could progress into a coaching role in any organisational setting, including the education sector. You could also advance to a work-based teaching and learning role such as assessor-coach.

In addition, this programme may provide progression opportunities to other CMI courses such as a Level 5 qualification in Leadership and Management or the Diploma in Professional Coaching Practice.

# MONEY MATTERS

Choosing to study a higher education course is a real investment in your future, leading to better career prospects and greater earning potential. We will provide all the advice and support you need to overcome any financial concerns you may have.

## An affordable option

Higher education fees with Derby College Group are competitive – usually £7,000 to £8,000 for a full-time course and £5,250 to £6,000 for a part-time course. Studying locally also means you will not face significant accommodation and transport costs.

## Tuition fees

You can pay for your higher education course through:

- a direct payment to us
- sponsorship from an employer
- a student loan

## Student loans

The Student Loans Company administers financial support for higher education. If you apply for a loan:

- you do not have to pay fees up front
- you do not need to pay back anything until after you have completed your programme and are earning over £25,000 per year
- you will not pay anything back at all if you never reach that salary level

Depending on your household income, you may also be eligible for a maintenance loan to cover your living costs.

## Applying for a loan

If you choose to apply for a loan, you will need to complete an online form each year you study. Your tuition fee will automatically be paid to us.

It makes sense to apply for student finance as early as possible. You can do so as soon as finance applications are open and you have accepted an offer – you do not have to wait until you have achieved all your entry grades.

Find out more: [www.gov.uk/student-finance/overview](http://www.gov.uk/student-finance/overview)

Call: 0800 028 0289

Web: [www.derby-college.ac.uk](http://www.derby-college.ac.uk)

## Bursaries available

DCG offers a range of bursaries for which students can apply at the start of each academic year. If your application is successful, your bursary will be paid throughout the year.

You will be asked to complete a series of questions via an online questionnaire and provide a short personal statement. We especially target our support at students:

- from ethnically diverse and minority backgrounds
- who live in areas where people do not often progress to higher education
- who are the first in their family to undertake higher education
- with an inclusion need







## Advanced Learner Loan

### Advanced Learner Loan

You could also qualify for a loan if you are on other programmes at Level 3 or above, including our Access to Higher Education Diplomas.

The introduction of the Advanced Learner Loan means that even more students aged 19 or over now have access to a financial support package which is similar to that available to university undergraduates.

Rather than having to pay for your fees up front, you can access a loan from the Student Loans Company which you only need to repay once you have completed your studies and when your earnings reach a certain point. For those taking out a loan after August 2023, the earning threshold is £25,000 a year.

The loans are easy to apply for. Your household income and employment status are not taken into account and there are no credit checks.

**Please note:** the details about the Advanced Learner Loan are subject to confirmation and could change.

Find out more: [www.gov.uk/advanced-learner-loan](http://www.gov.uk/advanced-learner-loan)

Or contact Student Services on **0800 028 0289**

Email: [enquiries@derby-college.ac.uk](mailto:enquiries@derby-college.ac.uk)

Web: [www.derby-college.ac.uk](http://www.derby-college.ac.uk)

### Disabled Students' Allowance

As a higher education student in England, you can apply for the Disabled Students' Allowance (DSA) if you have a disability (as defined under the Equality Act 2010), long-term health condition, mental health condition or specific learning difficulty such as dyslexia. The support depends on your individual needs and not on your income.

The Disabled Students' Allowance pays for extra support to help you make the most of your studies. This could be payment for study skills support, such as dedicated support for dyslexia, or for specialist equipment such as electronic note-taking software.

The application process for the DSA can take up to 14 weeks.

Find out more:

[www.gov.uk/disabled-students-allowances-dsas](http://www.gov.uk/disabled-students-allowances-dsas)

Email: [InclusionHE@derby-college.ac.uk](mailto:InclusionHE@derby-college.ac.uk)



# YOUR COLLEGE LIFE

We want you to make the most of your time with us. From excellent careers advice to comprehensive support services, outstanding nursery provision to a dynamic students' union, it all adds up to a great learning experience.

## Student Services

The experienced and friendly staff in Student Services are dedicated to your wellbeing and success. They can give you the initial guidance and information you need to choose a programme that is right for you and your future plans.

They can also refer you to other support services within the College which are not directly related to your studies, such as financial hardship or health and mental health issues.

## Learning Support

If you require learning support, our team can help you to maximise your potential and reach your goals. We are an inclusive education provider and a support team is available on all College sites. They work both in and out of classrooms and during exams, providing technology, equipment, modifications and much more. This range of support will enable you to access all the opportunities that College has to offer.

If you have dyslexia, autism, ADHD or any other specific needs, please provide us with as much detail as possible. One of the Learning Support Services team will be in touch to find out more about you and the methods of support that suit you best.

Find out more:

[www.derby-college.ac.uk/student-support](http://www.derby-college.ac.uk/student-support)

Call: 0800 028 0289

## Careers guidance

Our experienced Careers Team will help you take full advantage of your skills, knowledge, learning and opportunities. They have been awarded the top accreditation under the national Career Mark scheme and also hold the IAG matrix Standard.

The team provides impartial advice and guidance – whether you are considering university, are looking for new opportunities in the job market or want to embark on a career change.

If you are thinking about moving on to university, we offer advice about UCAS applications and information on taster days and workshops held at our partner universities. Our Higher Education Guide will also help you select the right programme at the right institution and steer you through the application process.



## Derby College Students' Union

Derby College Students' Union (DCSU) helps improve your DCG experience and champions the learner voice. Among its unrivalled services, DCSU:

- listens to ideas from students about potential events and activities they wish to attend
- offers a range of trips to places such as Alton Towers, Drayton Manor and Amsterdam
- engages in charity work with which students can get involved
- provides the new TOTUM Card, powered by NUS extra, which can be bought directly from the DCSU offices, or online at [nus.org.uk](http://nus.org.uk), allowing access to thousands of discounts nationwide, both online and in-store
- offers easily accessible volunteering and work experience opportunities to students who wish to improve their CVs
- provides a 'safe place' for students to access advice
- receives and acts on feedback about how to ensure students have a positive DCG experience
- offers affordable stationery, art and IT materials which are available to buy at each office

Find out more: [www.dcsu.co.uk](http://www.dcsu.co.uk)

Email: [info@dcsu.co.uk](mailto:info@dcsu.co.uk)

[www.facebook.com/DerbyCollegeSU](http://www.facebook.com/DerbyCollegeSU)



## Little Explorers Nursery

Our unique forest school nursery, focused on the outdoor learning environment, is set in the picturesque grounds of Broomfield Hall and provides excellent care for children, along with clubs for older children in the school holidays. In 2023 it was again rated 'outstanding' by Ofsted inspectors.

Find out more: [littleforestexplorers.co.uk](http://littleforestexplorers.co.uk)

Call: 01332 836620



## Residential accommodation

If you are enrolling on a programme where the qualification is awarded by the University of Derby, you may have access to the University's own accommodation. You are advised to get in touch with the University of Derby's accommodation office.

Find out more: [www.derby.ac.uk/life/accommodation](http://www.derby.ac.uk/life/accommodation)

Call: 01332 594111



**DERBY COLLEGE GROUP**

# OPEN DAYS 2023-2024

## THE ROUNDHOUSE

**THURSDAY 9<sup>TH</sup> NOVEMBER 2023** 5.00pm - 7.00pm

**THURSDAY 8<sup>TH</sup> FEBRUARY 2024** 5.00pm - 7.00pm  
During Apprenticeship Week

**THURSDAY 7<sup>TH</sup> MARCH 2024** 5.00pm - 7.00pm

## ADULT OPEN EVENING

**THURSDAY 18<sup>TH</sup> APRIL 2024** 5.00pm - 7.00pm

## ALL SITES OPEN EVENING

**THURSDAY 6<sup>TH</sup> JUNE 2024** 5.00pm - 7.00pm

## THE JOSEPH WRIGHT CENTRE

**WEDNESDAY 25<sup>TH</sup> OCTOBER 2023** 5.00pm - 7.00pm

**WEDNESDAY 31<sup>ST</sup> JANUARY 2024** 5.00pm - 7.00pm

**WEDNESDAY 28<sup>TH</sup> FEBRUARY 2024** 5.00pm - 7.00pm

## BROOMFIELD HALL

**WEDNESDAY 15<sup>TH</sup> NOVEMBER 2023** 5.00pm - 7.00pm

**WEDNESDAY 14<sup>TH</sup> FEBRUARY 2024** 5.00pm - 7.00pm

**WEDNESDAY 24<sup>TH</sup> APRIL 2024** 5.00pm - 7.00pm

**SATURDAY 8<sup>TH</sup> JUNE 2024** 9.00am - 12.00pm

**PLEASE NOTE:** you must pre-register for all of our events via our website before attending.

For further information about our Open Days:  
[www.derby-college.ac.uk/events](http://www.derby-college.ac.uk/events)



## WHERE TO FIND US

**The Roundhouse**  
Roundhouse Road  
Pride Park  
Derby DE24 8JE

**The Joseph Wright Centre**  
Cathedral Road  
Derby DE1 3PA

**Broomfield Hall**  
Morley, Ilkeston  
Derby DE7 6DN

**The Community College**  
2 Pimlico  
Ilkeston  
Derbyshire DE7 5JS

**0800 028 0289**

[enquiries@derby-college.ac.uk](mailto:enquiries@derby-college.ac.uk)  
[www.derby-college.ac.uk](http://www.derby-college.ac.uk)

Follow us on:



In line with the Consumer Act and as articulated in our Student Protection Plan, we reserve the right to close a course, if there are insufficient students to make the course viable.

All details contained within this publication were correct at the time of going to print. Special thanks to the staff and students who agreed to be photographed for the publication.

© Derby College Group 2023/24

# OPEN DAYS