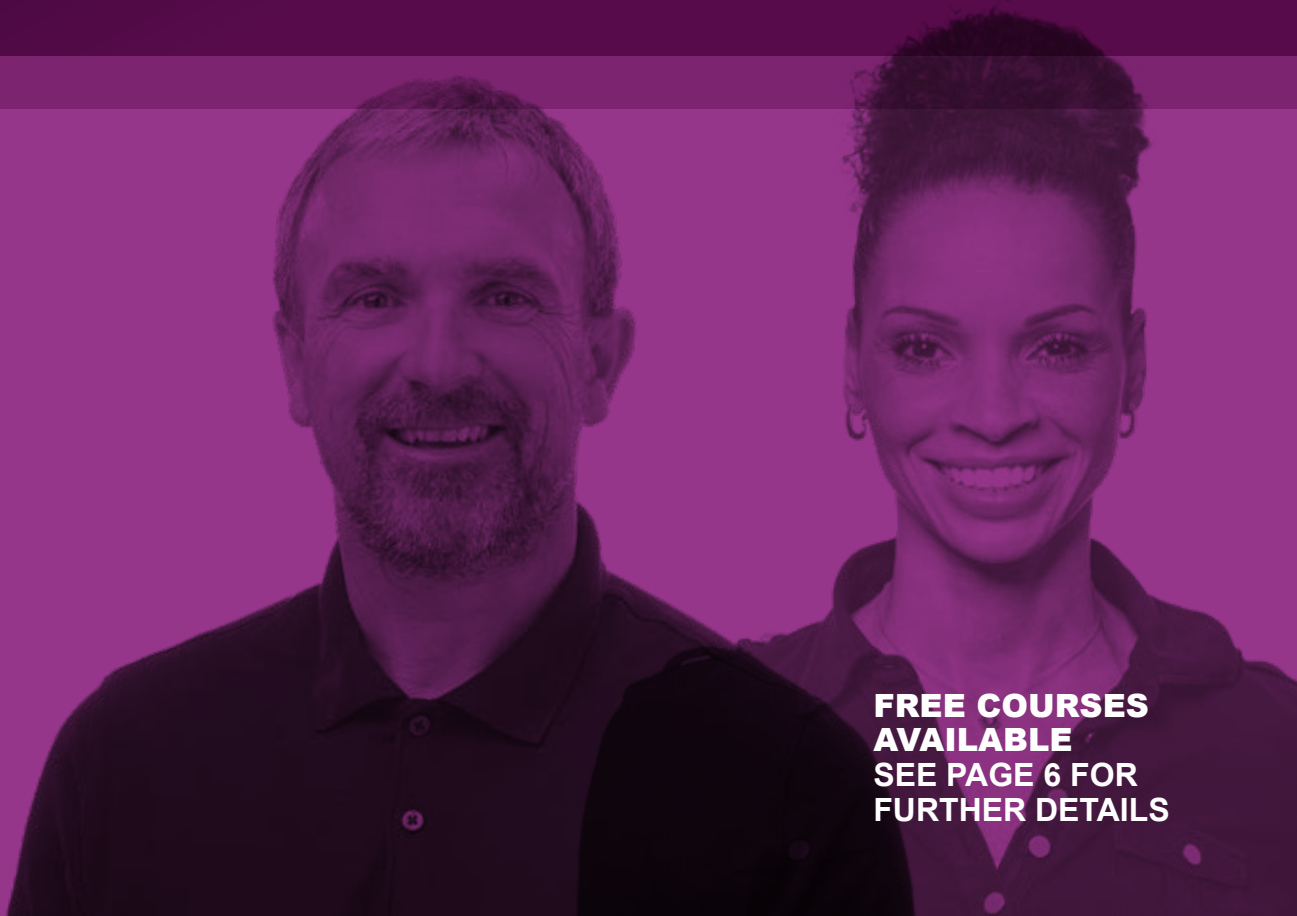




DCG

DERBY COLLEGE GROUP

ADULT COURSE GUIDE FOR 2025-2026



**FREE COURSES
AVAILABLE
SEE PAGE 6 FOR
FURTHER DETAILS**



WELCOME TO DERBY COLLEGE GROUP

Transform your future through learning

Looking to do something new, exciting and different with your life? Then you've come to the right place.

At Derby College Group (DCG), we're all about inspiring people to realise their dreams and achieve a brighter future.

You could be seeking a new job, going for that promotion, re-skilling for a career change or setting up your own business.

You could be returning to education later in life, rekindling your confidence through learning or considering a degree-level qualification.

You could be keen to build skills and knowledge that make your everyday life easier. You could want to help your children with their homework. Or you could simply be interested in pursuing new hobbies and broadening your circle of friends.

Whatever your ambitions, DCG has a flexible study option that's just right for you.

We look forward to welcoming you to our community.

HOW TO USE THIS GUIDE

Your stepping stone to success in work and life

This easy-to-use guide is the ideal starting point for your journey with DCG.

You'll find course listings on **pages 25 to 38** for a brief overview of everything we offer. Look carefully – you might even find learning opportunities you'd never considered before.

Then visit our website at **www.derby-college.ac.uk** to find out more about each course. Even better, join one of our open days to meet our staff, see our campuses and get a genuine feel for college life.



Applying to DCG

- You can apply online at **www.derby-college.ac.uk**. You'll find an online application form on every course page.
- If you need help with your application, call our Student Services team on **0800 028 0289** or book in at one of our campuses where we'll help you fill in your application.
- We may need to interview you to talk through your options, qualifications, experience and aspirations. For your convenience, interviews will take place throughout the summer and some may be over the phone or via Microsoft Teams.
- Your interview could include a screening assessment. This might be online or in person on one of our campuses. The assessment will confirm that the course you've selected is at the right level for you.
- You can complete your enrolment over the summer – online or at one of our special events.
- For some of our courses aimed at adults, you'll find that enrolment takes place all year round. Do check the individual course pages on our website for further information.

Don't forget our Open Enrolment Events

Come along to one of our Open Enrolment Events which take place in August and September.

You'll find the dates at **www.derby-college.ac.uk**

WHY CHOOSE DERBY COLLEGE GROUP?

Achieve your very best with DCG

A broad choice of courses

We're proud to offer an exciting portfolio of courses to suit all interests and aspirations. At DCG, we're determined to break down barriers to education. Whatever your experience – and whether you have few or no previous qualifications – there's a learning pathway to suit you.

Boost your career prospects

DCG gives you the chance to improve your skills, broaden your knowledge, gain valuable qualifications and add an extra dimension to your CV. You could secure that dream job, clinch a promotion, set up a commercial venture or introduce new services to your business.

Considering higher education?

Interested in studying at HNC, Foundation Degree or Honours Degree level? Our flexible and cost-effective study options could be the answer. And don't forget to check out our new Higher Technical Qualifications (HTQs) which provide an alternative to degrees and apprenticeships.



Impressive standards

Your learning is in safe hands with DCG. In our latest Ofsted inspection in autumn 2024, we were rated as a 'good' college which makes a 'strong' contribution to meeting skills needs in our area.

Teaching expertise

Our professional teaching teams are dedicated to helping you reach your full potential. Inspiring and engaging, tutors are passionate about their subjects – and many bring vast industry experience to their roles.

All the support you need

If you're seeking advice or guidance, Student Services should be your first port of call. You'll find a team of experienced, friendly staff at every campus who can help you make the most of your time at DCG.

Learning that fits around you

We're committed to providing flexible study pathways, including part-time learning opportunities so that you can balance your studies with your lifestyle, work and family commitments.

Making it affordable

Don't forget that education is an investment in your future. If you're worried about the financial commitment involved, check out the funding calculator which will soon be going live on our website or ask us for advice on Advanced Learner Loans and other forms of financial support. Some courses may even be **FREE** depending on your circumstances.

State-of-the-art facilities

Latest learning technologies and industry-standard facilities add up to a great learning environment at DCG. There are library services at all our main campuses, with study spaces, computers with Internet access, printing and photocopying resources.

Transform your social life

There's a real sense of community at DCG – it's a place where people of all ages and backgrounds come together to make friends and discover new interests. You'll find the Students' Union offers an array of clubs, societies and entertainment.

Easy to reach

Our central campuses in Derby and Derbyshire are served by good public transport links. See www.derby-college.ac.uk/student-support/transport-getting-to-college for information about the routes available.

ARE YOU ELIGIBLE FOR A FREE COURSE?

Can you afford to miss out?

Funding for low-income students

The Department for Education's Adult Skills Fund allows low-income learners to be fully funded if they're taking certain courses.

As part of the eligibility criteria, we can fully fund learners who are unemployed, employed or self-employed – as long as they earn below £25,000 annual gross salary. For details, visit www.gov.uk and search for Adult Skills Fund.

From August 2025, the East Midlands Combined County Authority (EMCCA) will take control of the Adult Skills Fund for our area. See www.eastmidlands-cca.gov.uk

Free Courses for Jobs

Under a new initiative, Free Courses for Jobs (FCFJ), local students may be able to benefit from an even higher earnings threshold to be eligible for full funding.

FCFJ helps individuals without a Level 3 qualification or higher to gain the skills they need to get the job they want, whatever their stage of life. It is also open to unemployed individuals and those who already hold a Level 3 qualification but earn below the national living wage.

The scheme aims to reduce sector skills shortages, support individuals to boost their career prospects in their current industry or enable them to reskill for a new sector.

Locally, the EMCCA has now set a low-earnings threshold salary level of £33,796.80 for students living within the area and studying specific Level 3 courses. See www.eastmidlands-cca.gov.uk for more information.

Please note

These initiatives do not cover all courses, so please contact us to find out if you're eligible and if it applies to the course in which you're interested. You'll need to provide evidence of your low earnings if you're claiming full funding.



Further financial support


We're committed to helping people who might face financial barriers while pursuing their learning ambitions. You'll find full information about the tuition fees for each course on our website. Remember that:

- if you're studying at Level 3 or higher, you may be eligible for an Advanced Learner Loan
- if you're taking a higher education course, you can apply for a loan from the Student Loans Company
- additional financial support may be available through DCG

There is more information and handy guides to paying your fees at: www.derby-college.ac.uk/student-support or contact us directly:

Tel: 0800 028 0289

Email: studentservices@derby-college.ac.uk



**“The Access course
is great if you feel you need
extra support before starting
university. We cover such a wide
range of subjects and I also like
the freedom that studying at
Broomfield Hall brings.”**

*Celine Frosthagen, whose dream is to
work as a zoo keeper, is studying the
Access Diploma in Animal Science
and plans to progress to degree-
level studies with DCG.*

Our online funding calculator

Not sure what funding you might be entitled to? We'll shortly be including an easy-to-use funding calculator on our website at www.derby-college.ac.uk

ADVANCED LEARNER LOANS

The flexible way to pay for your tuition fees

Qualify now, pay later

If you're aged 19 or over, an Advanced Learner Loan could help with the costs of your studies at DCG. The loans are easy to apply for, your household income and employment status are not taken into account and there are no credit checks. You'll only start repaying in the April after you have completed your studies and when your earnings reach a certain point. At the time of going to print, the earning threshold was £25,000 a year.

What can I use the loan for?

Loans can be used to pay for eligible academic, vocational, technical and professional qualifications at Levels 3, 4, 5 and 6.

How does it work?

The Advanced Learner Loan works in a similar way to the higher education student loans systems. You'll apply for it via the Student Loans Company and the payment will then be made directly to DCG. Provided your loan is approved before you enrol, there'll be no upfront cost to you.

How much are the loans for?

For all eligible qualifications, the loan will be for up to 100% of the cost of your training, including tuition and material fees. The minimum you can apply for is £300.

How to apply

- You'll need to have an interview with a member of DCG staff for the subject discipline for which you are applying.
- Information will then be sent to you with details of how to apply online.




Advanced Learner Loan

Find out more at: www.gov.uk/advanced-learner-loan or contact our friendly Student Services team on:

Tel: 0800 028 0289

Email: enquiries@derby-college.ac.uk

PLEASE NOTE: details about the Advanced Learner Loan are subject to confirmation and could change. For updates see: www.derby-college.ac.uk

A man with a beard and short hair is wearing a grey and black Adidas hoodie. He is standing outdoors with green foliage in the background. The image is framed by a purple border.

“I really enjoyed the fitness training side and leadership elements of my DCG courses. They prepare students well for a life in the public and uniformed services.”

***Marek Piontkowski**, who took DCG courses from Level 3 to the BA (Hons) Security and Offender Management and then a PGCE teaching qualification. He has now joined the teaching team at DCG's Broomfield Hall.*

Other support available

There is a national bursary fund to help individuals with learning difficulties or disabilities, parents who need help with childcare, and ex-military personnel.

In addition, our Advanced Learner Loan Bursary Fund may help you meet the associated costs of coming to College, such as childcare and travel. See: www.derby-college.ac.uk/student-support/19-plus

HIGHER EDUCATION STUDENT FINANCE

Investing in your future

Study close to home

DCG offers a growing portfolio of higher education courses to boost your career prospects and earning potential. Our fees are competitive and studying locally means you will not face significant accommodation and transport costs.

Tuition fees

You can pay for your higher education programme through:

- a direct payment to DCG
- sponsorship from an employer
- a student loan

Student loans

The Student Loans Company administers financial support for higher education. If you apply for a loan:

- you don't have to pay fees up front
- you don't need to pay back anything until after you have completed your programme and are earning over £25,000 per year
- you won't pay anything back at all if you never reach that salary level

Depending on your household income, you may also be eligible for a maintenance loan to cover your living costs.

Applying for a loan

If you choose to apply for a loan:

- you will need to complete an online form each year you study
- your tuition fee will automatically be paid to DCG

We recommend that you apply for student finance as early as possible. You can do so as soon as finance applications are open and you have accepted an offer.



Inclusive education

We are an inclusive education provider and work with our students to create an inclusive teaching plan. If you have an inclusion need (such as dyslexia, autism or anxiety for example), please provide us with as much detail as possible.

One of the Higher Education Support Team will be in touch to learn more about you and the methods of support that suit you best. We offer a range of technology support solutions as well as a base room on each campus that you can access.



Disabled Students' Allowance

As a higher education student in England, you can apply for the Disabled Students' Allowance (DSA) if:

- you have a disability (as defined under the Equality Act 2010)
- you have a long-term health condition
- you have a mental health condition or specific learning difficulty such as dyslexia

Disabled Students' Allowances pay for extra support to help you make the most of your studies. This could be for:

- study skills support such as dedicated support for dyslexia
- specialist equipment such as electronic note-taking software

The application process for the DSA can take up to 14 weeks. For further information, visit: www.gov.uk/disabled-students-allowances-dsas or email DCG at: inclusionHE@derby-college.ac.uk for full details and assistance with your application.



Learn more at:

www.gov.uk/student-finance or contact us:

Tel: 0800 028 0289

www.derby-college.ac.uk

GET BACK INTO LEARNING WITH DCG

Make a fresh start

A brighter future through learning

Open to everyone, our Community Learning programmes will help you get the most out of life, learning and work. You could add important qualifications to your CV, boost your career prospects and gain greater confidence in your own abilities. Don't worry if you've been out of education for a while: all we ask is that you want to learn. Even better, you'll find that many of our courses are **FREE**.

Improve your English and maths

We offer English and Maths Functional Skills qualifications that can help you with everyday tasks – whether handling money, grasping statistics, calculating measurements, composing letters and emails, making presentations or understanding written instructions. You could even find yourself helping the kids with their homework!

Make the grade with GCSEs

Our flexible GCSE classes in English Language, English Literature, Maths and Biology are specially designed for adults. A strong GCSE profile can transform your life chances while enhancing your self-esteem and independence. Add these all-important qualifications to your CV and you'll find it easier to progress to further study, gain an advantage in your career and apply for better paid jobs.





Boost your digital know-how

Get to grips with the digital age. Knowledge of the latest technologies is just as important as English and maths these days and our digital skills courses will help you thrive in this exciting new era.

You may need to make better use of a computer, tablet or smart phone and improve your abilities with everyday activities like website searches, social media, Internet banking and job applications. Alternatively, you may want to feel more assured in the workplace when using packages such as email, word processing and spreadsheets.

There's an option at DCG to suit you, whether you're a complete beginner or keen to take your skills up to Level 2.

Level 3 qualifications for career success

If you're applying for a better job, seeking promotion or considering a career change, we have a growing range of Level 3 qualifications to translate your plans into reality. If you've been out of the job market for a while, they may also open the door to employment.

Ideal for adults, the Level 3 courses cover professions ranging from health and social care to education and training, from business administration to leadership and management. They could even be a stepping stone to a coveted university place to take your career further and faster.

Adult students thrive in the friendly and welcoming learning environment at DCG. You'll meet fellow learners from diverse backgrounds and age groups who bring wide-ranging experiences to their studies.

Don't forget our FREE course options!

If you're an adult, living in England and studying your first Level 3 qualification – or if you are unemployed or earning under the National Living Wage annually – you may be entitled to full government funding to cover the cost of these courses. **See page 6.**

Alternatively, you could consider applying for an Advanced Learner Loan (**see page 8**) to fund your programme.

GET BACK INTO LEARNING WITH DCG

ESOL language learning

If English isn't your main language, we can help you improve your reading, writing, listening and speaking skills in ways which will make a genuine difference to your life. Our English for Speakers of Other Languages (ESOL) programmes are an excellent choice if you want to build on your English skills for talking to your GP, child's school, community services or employer.

The programmes will help you study further, improve your CV or build your confidence when making job applications. You'll also learn about life in modern Britain, invaluable if you plan to apply to become a British citizen.



A great learning environment

DCG provides a supportive and relaxed atmosphere for your studies. You'll find that classes are small and our friendly, approachable tutors will deliver a learning experience to meet your individual needs.

Throughout your course, we will work closely with you to find the styles of learning that suit you best and match your aspirations.

At your convenience

Flexibility is key at DCG. We do everything we can to help you fit your learning around a busy lifestyle. Many of our courses are organised so that you're able to balance your studies with your other commitments at home and work. See our course listings starting on **page 25** for further information about the different day, evening and weekend study options available.

Whether within or beyond the city, all our College campuses are easy to reach via public transport too.

Distance learning

Distance is no object when it comes to learning with DCG.

For the ultimate in flexibility, choose one of our popular distance learning courses. You can:

- fit convenient, affordable learning around your work and home life
- study at home or on the go – at any time and from anywhere
- access engaging study materials from a range of devices
- use our easy-to-navigate distance learning platform
- gain expert support from our distance learning specialists
- work towards recognised qualifications in various subjects
- improve your career prospects with skills in areas like customer service, team leading, event planning and digital marketing.

Find out more: www.derby-college.ac.uk/distance-learning

Your course may be FREE

Don't miss out! You may be able to take one of our short courses or distance learning courses for free. There's an exciting array of topics.

You'll find the costs of each programme in our course listings starting on **page 25** – and further details on our website.

OUR COMMUNITY COLLEGE AT ILKESTON

Reskill, retrain, reinvent yourself

Exciting adult learning opportunities

If you want to chart a new direction in life, our Community College is a great place to start. It's the perfect setting to update your knowledge, gain new skills, retrain for success in the jobs market, go for promotion or take up a fresh leisure interest.

Situated in the heart of Ilkeston at Pimlico, the Community College expands much more than your knowledge. You'll meet new people, widen your social circle and broaden your horizons.





A broad choice of courses

Our portfolio of adult learning opportunities is constantly growing to meet the needs of local learners like you. The Community College offers everything from introductory courses to professional level qualifications, with a focus on flexible learning pathways that can fit around your lifestyle.

If you're considering a change of career, our programmes stand you in good stead. You can also choose subjects to help with your day-to-day activities, such as improving your English, maths, digital, British Sign Language or first aid skills. You could even try Spanish or creative crafts.

Excellent facilities

We're proud of our inspiring facilities which give you access to the latest learning technologies and resources, such as our well-equipped IT suite.

Find out more

Why not attend an open day or pop in and speak to us for more details on the exciting range of opportunities available at Ilkeston? Find out more at:

www.derby-college.ac.uk/adult-community-learning/



HIGHER TECHNICAL QUALIFICATIONS

Take your skills to the next level

Step up to an HTQ

Higher Technical Qualifications (HTQs) open doors to high skilled and highly paid jobs. They're ideal if you're looking for a more vocational course at Level 4 or 5 – and you can rest assured that they're Independently approved against the knowledge, skills and behaviours that business and industry expect.

Our students find that HTQs offer an inspiring alternative to degrees and apprenticeships. Meanwhile, our employer partners regard them as a trusted route to higher qualifications, ensuring their workforce is well equipped for the future.

DCG is approved by the Institute for Apprenticeships and Technical Education to run HTQs in subjects such as Architectural Technology; Building Services; Construction Management; Modern Methods of Construction; Quantity Surveying; Electrical and Electronic Engineering; Mechanical Engineering; Software Development; and Health and Social Care.





East Midlands Institute of Technology

The introduction of HTQs coincides with the opening of new high-tech facilities at DCG as part of the East Midlands Institute of Technology (EMIoT).

The EMIoT welcomed its first students in September 2024 in what is a new era for higher-level technical education in engineering, digital, professional construction and leadership skills.

The new EMIoT hub at the Roundhouse campus features state-of-the-art classrooms and collaborative workspaces designed to provide students with a hands-on and immersive learning experience which will benefit their careers for years to come.

DCG has partnered with the University of Derby, Loughborough University and Loughborough College – as well as global powerhouse employers – to launch the Institute of Technology initiative with the aim of boosting the region's economic growth.

It will broaden opportunities for anyone wishing to retrain or upskill mid-career, in particular for emerging digital and low-carbon economies.

The portfolio will also feature micro-credentials – short courses typically taught over four to 12 weeks. These enable individuals to reskill for senior positions, without the time and financial commitment of a full study programme.

Find out more: www.derby-college.ac.uk/east-midlands-institute-of-technology/

EAST MIDLANDS

I	N	S	T	I	T	U	T	E	O	F
T	E	C	H	N	O	L	O	G	Y	

OUR COMMERCIAL CENTRES

Make the most of our services for the wider community

Dog Grooming Salon

Our dog grooming salon provides a high-quality service catering for a large range of dog breeds and sizes at very competitive prices cheaper than commercial salons.

Based at Broomfield Hall, the salon is run by experienced grooming professionals, supported by students who are developing their own grooming skills. Services include bathing and drying; clipping, styling and trimming; ear cleaning; and nail trimming. We are happy to discuss specific requirements with every owner.

We also offer specialist courses for anyone interested in pursuing a career in dog grooming, along with taster sessions and 'groom your own dog' days.

For further information or bookings:

Tel: **01332 836615**

Email: **dog.grooming@derby-college.ac.uk**

www.facebook.com/DerbyCollegeDogGrooming

Check out our price list at: **www.derby-college.ac.uk/open-to-the-public/dog-grooming-salon**



Broomfield Hall Animal Unit

Our Animal Unit provides a range of experiences for the community. We hold open days throughout the year for the public and prospective students to come and see DCG's facilities and animals. We also offer animal parties for children, animal experiences, keeper-for-a-day experiences, after-school clubs and junior zoo clubs throughout the holidays.

For further information and to book:

Tel: 0800 028 0289

Email: animal.unit@derby-college.ac.uk

www.facebook.com/broomfieldhallanimalunitandfarm



OUR COMMERCIAL CENTRES

The Florist

We offer bespoke floristry designs produced within the beautiful grounds of Broomfield Hall. Whether you're seeking innovative wedding designs, stunning gifts for that special occasion or advice on funeral tributes, our staff are always pleased to meet with you and discuss your personal requirements.

For further information and bookings:

Email: sarah.dale@derby-college.ac.uk



The Plant Centre

If you're looking for very competitively priced plants, look no further than the Plant Centre at Broomfield Hall. A haven for gardening enthusiasts, the centre offers an impressive selection including seasonal bedding, vegetable and herb plants, alpines and border perennials – all grown by our talented Horticulture students.

For further information:

Email: rebecca.herring@derby-college.ac.uk

www.derby-college.ac.uk/open-to-the-public/the-plant-centre



Little Explorers Forest School Nursery

Rated 'outstanding' by Ofsted, our unique 54-place Forest School nursery is set in the picturesque grounds of Broomfield Hall.

It offers high-quality care for children aged from three months to five years, plus care for older children during the school holidays – all in a safe, well-organised and attractive environment. The curriculum includes Forest School sessions in woodland areas of the site and visits to our farm. The nursery is run by a team of qualified, experienced and highly motivated staff.

For further information:

Tel: 01332 836620

www.littleforestexplorers.co.uk



OUR COMMERCIAL CENTRES

DCG Equestrian Centre

An approved BHS riding establishment, our Equestrian Centre is run as a commercial as well as educational training yard which meets the highest standards. The centre provides excellent training for Horse Care Management students and runs competitions, training clinics and short courses for intermediate and advanced riders.

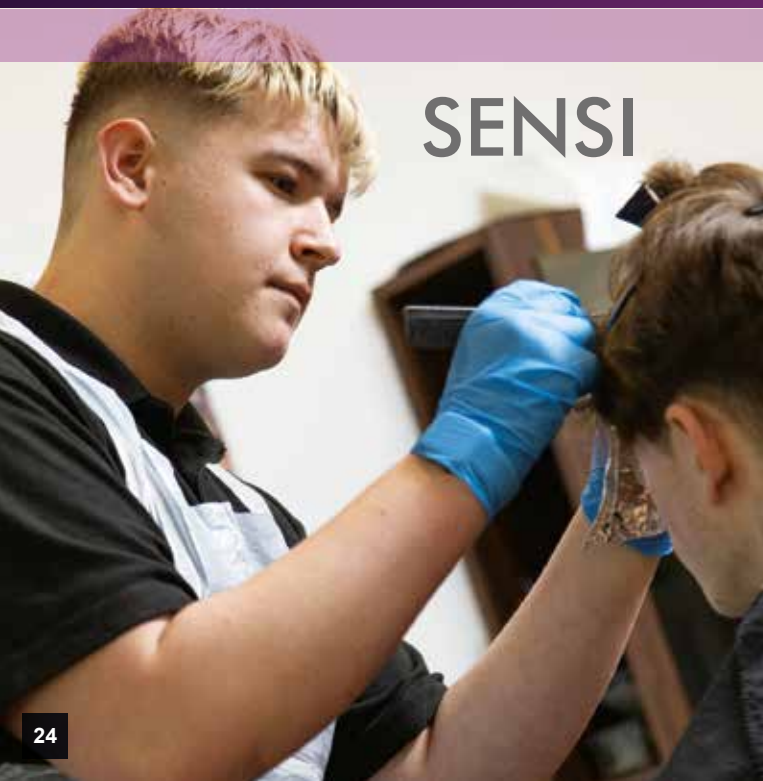
We also offer a wide range of facilities, including an indoor arena, outdoor school and cross-country facilities for hire, along with a 5km off-road ride around the Broomfield estate.

For further information:

Tel: **0800 028 0289**

Email: amy.alexander@derby-college.ac.uk

www.derby-college.ac.uk/equestrian-centre



SENSI

SENSI

Our SENSI hair and beauty salon at the Roundhouse offers a range of commercial hair, beauty and barbering services.

The salon is a 'feel good' place to prepare for a special occasion, enjoy deep relaxation and indulge in a little pampering. Hair treatments include cutting, blow dry, colouring, perming and barbering services while beauty treatments include facials, eyelash tints, waxing, manicures, pedicures, make-up and massage. Our affordable prices mean you can feel like a million dollars – for much less!

For further information, special offers and appointments:

Tel: **0800 028 0289**

www.derby-college.ac.uk/sensi

ADULT COURSES 2025-2026

*Find the study programme that's
right for you with our easy-to-use
listings, starting on the next page.*

YOUR KEY GUIDE

Locations

- RH** = The Roundhouse
- HB** = Roundhouse Hudson Building
- BH** = Broomfield Hall
- JWC** = The Joseph Wright Centre
- ILK** = The Community College, Ilkeston
- SJC** = St James Centre
- SF** = Sinfen
- WP** = Workplace
- OS** = Off Site
- FLEX** = Flexible Location

Study modes

DIST = Distance Learning

ROLL ON ROLL OFF = programmes which are ongoing throughout the year and you can enrol at any time

***FREE** = these courses may be fully funded for eligible students

OUR COURSES 2025-2026												
Course Title	Location	Weeks	Hours per week	Level	Start / w/c	Days / Times		Free	Free* (subject to eligibility)	Tuition Fee (£)	Exam Fee (£)	Advanced Learner Loan
Adult English, Maths and Digital Skills												
Would you benefit from improving your English and maths skills? Would digital know-how boost your confidence in every aspect of life, learning and work? We offer friendly, reassuring study support to help you achieve your goals.												
Adult Functional Skills English - Various Levels	ILK	35	2	0	15 Sept 2025	Various		-	Free*	0	0	-
Adult Functional Skills English - Various Levels	RH	35	2	0	15 Sept 2025	Various		-	Free*	0	0	-
Adult Functional Skills English - Various Levels	JWC	35	2	0	15 Sept 2025	Various		-	Free*	0	0	-
Adult Functional Skills Maths - Various Levels	ILK	35	2	0	15 Sept 2025	Various		-	Free*	0	0	-
Adult Functional Skills Maths - Various Levels	RH	35	2	0	15 Sept 2025	Various		-	Free*	0	0	-
Adult Functional Skills Maths - Various Levels	JWC	35	2	0	15 Sept 2025	Various		-	Free*	0	0	-
Adult Functional Skills Maths - Various Levels	SF	35	2	0	15 Sept 2025	Various		-	Free*	0	0	-
Adult Functional Skills - Maths	DIST	35	2	2	15 Sept 2025	Wed 13:30 - 15:30		-	Free*	0	0	-
Employer-based Functional Skills English - Outreach	SJC	12	2	0	Roll on roll off	Contact us		-	-	0	0	-
Employer-based Functional Skills Maths - Outreach	SJC	12	2	0	Roll on roll off	Contact us		-	-	0	0	-
Beginners IT	ILK	17	2	0	16 Sept 2025	Tue 12:30 - 14:30		-	Free*	0	0	-
Essential Digital Skills - Various Levels	JWC	17	2½	0	15 Sept 2025	Mon 12:15 - 14:45		-	Free*	0	0	-
Essential Digital Skills - Various Levels	RH	17	2½	0	16 Sept 2025	Tue 18:00 - 20:45		-	Free*	0	0	-
Essential Digital Skills - Various Levels	ILK	17	2½	0	16 Sept 2025	Tue 09:30 - 12:00 or Thu 18:00 - 20:45		-	Free*	0	0	-
Essential Digital Skills - Various Levels	SF	17	2½	0	17 Sept 2025	Wed 09:00 - 11:30 or 12:00 - 14:30		-	Free*	0	0	-
Award in Digital and IT Skills	RH	13	2½	2	15 Sept 2025	Mon 18:00 - 20:45		-	Free*	403.2	0	-
Award in Digital and IT Skills for Career Progression	ILK	12	2½	2	16 Sept 2025	Tue 18:00 - 20:45		-	Free*	403.2	0	-
Award in Digital and IT Skills - Cybersecurity	RH	11	2½	2	6 Jan 2026	Mon 18:00 - 20:45		-	Free*	403.2	0	-
Award in Digital and IT Skills - Cybersecurity	ILK	11	2½	2	6 Jan 2026	Tue 18:00 - 20:45		-	Free*	403.2	0	-
Award in Digital and IT Skills - Using Digital Technologies and Spreadsheets	RH	11	2½	2	13 Apr 2026	Mon 18:00 - 20:45		-	Free*	403.2	0	-
Award in Digital and IT Skills - Using Digital Technologies	ILK	11	2½	2	14 Apr 2026	Tue 18:00 - 20:45		-	Free*	403.2	0	-
Certificate in Digital and IT Skills	RH	35	2½	2	15 Sept 2025	Mon 18:00 - 20:45		-	Free*	1008	0	-
Certificate in Digital and IT Skills	ILK	35	2½	2	15 Sept 2025	Tue 18:00 - 20:45		-	Free*	1008	0	-

OUR COURSES

2025-2026

Course Title	Location	Weeks	Hours per week	Level	Start / w/c	Days / Times	Free	Free* (subject to eligibility)	Tuition Fee (£)	Exam Fee (£)	Advanced Learner Loan
Agriculture and Arboriculture Go for growth with part-time study opportunities in our Land-based Academy. We can help you develop new skills, add to your portfolio of professional qualifications and expand your business.											
Agriculture											
Award in the Safe Application of Pesticides using Pedestrian Handheld Equipment (PA6) (NPTC 0216-54)	BH	1	6	2	Roll on roll off	Contact us	-	-	170	80	-
Award in the Safe Application of Pesticides using Pedestrian Handheld Equipment (PA6) (NPTC 0216-54) (Knapsack Around Water Application)	BH	1	6	2	Roll on roll off	Contact us	-	-	170	80	-
Award in the Safe Application of Pesticides Using Self Propelled, Mounted, Trailed Horizontal Boom Sprayers (PA2) (NPTC 0216-50)	BH	1	6	2	Roll on roll off	Contact us	-	-	160	90	-
Principles of Safe Handling and Application of Pesticides (PA1) (NPTC 0216-49)	BH	1	6	2	Roll on roll off	Contact us	-	-	120	80	-
Award in the Safe Use of a Manually Fed Woodchipper (NPTC 0020-57)	BH	1	6	2	Roll on roll off	Contact us	-	-	145	55	-
Award in the Safe Use of Manually Fed Woodchippers (NPTC 0020-58)	BH	1	6	2	Roll on roll off	Contact us	-	-	145	55	-
Award in the Safe Use of Brush-cutters and Trimmers (NPTC 0014-21 and 0014-26)	BH	1	12	2	Roll on roll off	Contact us	-	-	255	90	-
Certificate of Competence in the Safe Use of Hand-held Hedge Cutters (NPTC 0014-34)	BH	1	6	2	Roll on roll off	Contact us	-	-	170	80	-
Certificate of Competence in the Safe Use of Mowers (NPTC 0014-35)	BH	1	6	2	Roll on roll off	Contact us	-	-	250	80	-
Banks Person Training	BH	1	6	2	Roll on roll off	Contact us	-	-	170	80	-
Certificate of Competence in the Safe Use of All-Terrain Vehicles (NPTC 0014-32)	BH	1	12	2	Roll on roll off	Contact us	-	-	255	90	-
Award in the Transport of Animals by Road (Short Journeys) (NPTC 0141-04)	BH	1	6	2	Roll on roll off	Contact us	-	-	125	75	-
Certificate of Competence in Forklift Truck Operations (NPTC 0014-33)	BH	1	12	2	Roll on roll off	Contact us	-	-	255	90	-
Certificate of Competence in Tractor Driving and Related Operations (NPTC 0014-31)	BH	1	12	2	Roll on roll off	Contact us	-	-	255	90	-
Trailer Use and Reversing	BH	1	6	2	Roll on roll off	Contact us	-	-	170	80	-
Certificate of Competence in the Safe and Responsible Use of Veterinary Medicines (NPTC 0141-21)	BH	1	12	2	Roll on roll off	Contact us	-	-	255	90	-
Lambing - an Introduction to Theory and Practical	BH	1	5	1	8 Mar 2026	Contact us	-	-	50	0	-
Introduction to Smallholding	BH	1	6	2	11 Oct 2025	Weekends	-	-	180	0	-

OUR COURSES 2025-2026	Location	Weeks	Hours per week	Level	Start / w/c	Days / Times	Free	Free* (subject to eligibility)	Tuition Fee (£)	Exam Fee (£)	Advanced Learner Loan
Course Title											
Agriculture (continued)											
Smallholding - Animal Husbandry	BH	1	6	2	7 Mar 2026	Weekends	-	-	180	0	-
Smallholding - Boundary Repair and Maintenance	BH	1	6	2	17 Jan 2026	Weekends	-	-	180	0	-
Smallholding - The Smallholder's Calendar and Use of Machinery	BH	1	6	2	16 May 2026	Weekends	-	-	180	0	-
Smallholders Course	BH	4	12	2	11 Oct 2025	Weekends	-	-	600	0	-
Arboriculture											
Introduction to Basic Chainsaw Use and Safety	BH	1	6	1	Roll on roll off	Contact us	-	-	75	0	-
Introduction to Basic Crosscutting	BH	1	6	1	Roll on roll off	Contact us	-	-	75	0	-
Award in the Safe Application of Pesticides using Pedestrian Handheld Equipment (PA6) - Installing Pesticide Plugs in Tree Stumps (PA6PP) (NPTC 0216-54)	BH	1	4	2	Roll on roll off	Contact us	-	-	120	80	-
Award in the Safe Use of Mobile Elevated Work Platforms (NPTC 0017-02)	BH	1	12	2	Roll on roll off	Contact us	-	-	255	90	-
Certificate of Competence for Arboricultural Ground Workers (NPTC 0039-24)	BH	1	6	2	Roll on roll off	Contact us	-	-	170	80	-
Certificate of Competence in Chainsaw Maintenance and Cross-Cutting (NPTC 0039-20)	BH	1	12	2	Roll on roll off	Contact us	-	-	260	140	-
Certificate of Competence in Felling and Processing Medium Trees over 380mm and up to 760mm (NPTC 0039-33)	BH	1	18	2	Roll on roll off	Contact us	-	-	255	90	-
Certificate of Competence in Small Tree Felling up to 380mm (NPTC 0039-21)	BH	1	18	2	Roll on roll off	Contact us	-	-	330	140	-
Certificate of Competence in Tree Climbing and Aerial Rescue (NPTC 0039-22)	BH	1	30	2	Roll on roll off	Contact us	-	-	510	140	-
Certificate of Competence in Using a Chainsaw from a Rope and Harness (NPTC 0039-23)	BH	1	12	2	Roll on roll off	Contact us	-	-	370	140	-
CPD Module in Chainsaw Maintenance and Cross-cutting	BH	1	6	2	Roll on roll off	Contact us	-	-	255	90	-
CPD Module in Felling up to 380mm	BH	1	6	2	Roll on roll off	Contact us	-	-	255	90	-
Award in the Safe Use of a Chainsaw from a Mobile Elevated Work Platform (NPTC 0021-15)	BH	1	12	3	Roll on roll off	Contact us	-	-	255	90	-
Certificate of Competence in Emergency Treework Planning (NPTC 0039-36)	BH	1	6	3	Roll on roll off	Contact us	-	-	255	90	-
Certificate of Competence in Individual Windblown Trees (NPTC 0039-37)	BH	1	18	3	Roll on roll off	Contact us	-	-	255	90	-

OUR COURSES 2025-2026												
Course Title	Location	Weeks	Hours per week	Level	Start / w/c	Days / Times		Free	Free* (subject to eligibility)	Tuition Fee (£)	Exam Fee (£)	Advanced Learner Loan
Animal Care and Equine Turn your passion for animals into a fulfilling career. We're experts in everything from dog grooming to equine, wildlife and zoo management, so we can help you raise your profile as a skilled and dedicated animal care professional.												
Animal Care												
Dog Grooming Taster Day	BH	1	5	0	Contact us	Contact us		-	-	80	0	-
Keeper for a Day Experience	BH	1	6	0	Roll on roll off	Weekends and Holidays 09:30 - 15:30		-	-	95	0	-
Animal Experience	BH	1	1½	1	Roll on roll off	Weekends and Holidays		-	-	30	0	-
Certificate for Dog Grooming Assistants	BH	18	6	2	8 Sept 2025	Mon 09:30 - 16:00		-	-	1480	0	-
Certificate for Dog Grooming Assistants	BH	18	6	2	9 Sept 2025	Tue 09:30 - 16:00		-	-	1480	0	-
City & Guilds Diploma in Dog Grooming	BH	32	6	3	5 Sept 2025	Contact us		-	-	3417	0	-
Animal Care Higher Education												
Access to HE Diploma (Animal Science) - 1 year	BH	30	15	3	8 Sept 2025	Contact us		-	-	5197	0	-
Foundation Degree in Animal Management (FdSc) (Full-time - 2 years)	BH	30	15	5	15 Sept 2025	Contact us		-	-	7500	0	-
Foundation Degree in Animal Management (FdSc) (Part-time - 4 years)	BH	30	8	5	15 Sept 2025	Contact us		-	-	3750	0	-
Foundation Degree in Animal Management (Zoo and Wildlife) (FdSc) (Full-time - 2 years)	BH	30	15	5	15 Sept 2025	Contact us		-	-	7500	0	-
Foundation Degree in Animal Management (Zoo and Wildlife) (FdSc) (Part-time - 4 years)	BH	30	8	5	15 Sept 2025	Contact us		-	-	3750	0	-
BSc (Hons) Animal Management (Top Up) (Full-time - 1 year)	BH	30	15	6	15 Sept 2025	Contact us		-	-	7500	0	-
BSc (Hons) Animal Management (Top-up) (Part-time - 2 years)	BH	30	8	6	15 Sept 2025	Contact us		-	-	3750	0	-
BSc (Hons) Animal Management (Zoo and Wildlife) (Top Up) (Full-time - 1 year)	BH	30	15	6	15 Sept 2025	Contact us		-	-	7500	0	-
BSc (Hons) Animal Management (Zoo and Wildlife) (Top-up) (Part-time - 2 years)	BH	30	8	6	15 Sept 2025	Contact us		-	-	3750	0	-
Equine												
Improve Your Riding	BH	11	1	1	17 Sept 2025	Wed 18:00 - 19:00		-	-	220	0	-
Improve Your Riding	BH	11	1	2	16 Sept 2025	Tue 18:00		-	-	220	0	-
Improve Your Riding	BH	11	1	2	16 Sept 2025	Tue 19:00		-	-	220	0	-
Improve Your Riding	BH	11	1	2	17 Sept 2025	Wed 19:00 - 20:00		-	-	220	0	-
Improve Your Riding	BH	11	1	2	18 Sept 2025	Thu 19:00 - 20:00		-	-	220	0	-
Improve Your Riding	BH	11	1	3	18 Sept 2025	Thu 19:00 - 20:00		-	-	220	0	-

OUR COURSES 2025-2026												
Course Title	Location	Weeks	Hours per week	Level	Start / w/c	Days / Times		Free	Free* (subject to eligibility)	Tuition Fee (£)	Exam Fee (£)	Advanced Learner Loan
Equine Higher Education												
FdSc Equine Science (Rehabilitation and Performance) (Full-time - 2 years)	BH	30	15	5	15 Sept 2025	Contact us		-	-	7500	0	-
FdSc Equine Science (Rehabilitation and Performance) (Part-time - 4 years)	BH	30	8	5	15 Sept 2025	Contact us		-	-	3750	0	-
FdSc Equine Science (Riding and Coaching) (Full-time - 2 years)	BH	30	15	5	15 Sept 2025	Contact us		-	-	7500	0	-
FdSc Equine Science (Riding and Coaching) (Part-time - 4 years)	BH	30	8	5	15 Sept 2025	Contact us		-	-	3750	0	-
BSc (Hons) Equine Science (Biomechanics and Performance) (Full-time - 1 year)	BH	30	15	6	15 Sept 2025	Contact us		-	-	7500	0	-
BSc (Hons) Equine Science (Biomechanics and Performance) (Top Up) (Part-time - 2 years)	BH	30	8	6	15 Sept 2025	Contact us		-	-	3750	0	-
BSc (Hons) Equine Science (Riding and Coaching) (Full-time - 1 year)	BH	30	15	6	15 Sept 2025	Contact us		-	-	7500	0	-
BSc (Hons) Equine Science (Riding and Coaching) (Top Up) (Part-time - 2 years)	BH	30	8	6	15 Sept 2025	Contact us		-	-	3750	0	-
Business, Leadership and Management												
Hit the ground running in a new job – or secure that promotion you've always dreamed about. Our courses in business, management and accountancy will put rapid career progression within your grasp.												
AAT Award in Bookkeeping	RH	12	6	1	12 Sept 2025	Fri 09:00 - 15:00		-	-	540	0	-
AAT Award in Bookkeeping	RH	12	6	1	9 Jan 2026	Fri 09:00 - 15:00		-	-	540	0	-
AAT Certificate in Bookkeeping	RH	18	6	2	9 Sept 2025	Tue 09:00 - 16:45		-	-	828	0	-
AAT Certificate in Accounting (Part-time)	RH	36	7	2	9 Sept 2025	Tue 09:00 - 16:45		-	-	1836	0	-
AAT Diploma in Accounting (Part-time)	RH	36	6	3	9 Sept 2025	Tue 9:00 - 16:45		-	-	2880	0	Yes
Certificate in Digital Marketing	DIST	26	6	2	Roll on roll off	Contact us		-	Free*	0	0	-
Certificate in Equality and Diversity	DIST	26	8	2	Roll on roll off	Contact us		-	Free*	0	0	-
Certificate in Event Planning	DIST	26	4	2	Roll on roll off	Contact us		-	Free*	0	0	-
Certificate in Information, Advice or Guidance	DIST	26	5	2	Roll on roll off	Contact us		-	Free*	0	0	-
Certificate in Lean Management Organisational Techniques	DIST	26	4	2	Roll on roll off	Contact us		-	Free*	0	0	-
Certificate in Living in a Fair and Diverse Society	DIST	26	4	2	Roll on roll off	Contact us		-	Free*	0	0	-
Certificate in Principles of Business Administration	DIST	26	7	2	Roll on roll off	Contact us		-	Free*	0	0	-
Certificate in Principles of Team Leading	DIST	26	7	2	Roll on roll off	Contact us		-	Free*	0	0	-
Certificate in Safeguarding, Prevent and British Values	DIST	26	4	2	Roll on roll off	Contact us		-	Free*	0	0	-
Diploma in Business and Administration	OS	52	6¾	2	Roll on roll off	Contact us		-	-	1356	0	-
Diploma in Customer Service	OS	36	0.42	2	Roll on roll off	Contact us		-	-	1987	0	-

OUR COURSES

2025-2026

Course Title	Location	Weeks	Hours per week	Level	Start / w/c	Days / Times	Free	Free* (subject to eligibility)	Tuition Fee (£)	Exam Fee (£)	Advanced Learner Loan
Business, Leadership and Management (continued)											
ILM Award in Leadership and Team Skills	OS	26	1.08	2	Roll on roll off	Contact us	-	-	1103	0	-
ILM Certificate in Leadership and Team Skills	OS	52	0.92	2	Roll on roll off	Contact us	-	-	1631	0	-
ILM Certificate in Leadership and Management	OS	52	0.67	3	Roll on roll off	Contact us	-	-	2000	0	-
Diploma in Business Administration	OS	52	8¼	3	Roll on roll off	Contact us	-	-	2573	0	-
Certificate in Advice and Guidance	OS	52	3	3	Roll on roll off	Contact us	-	-	811	0	-
Diploma in Advice and Guidance	OS	52	4	4	Roll on roll off	Contact us	-	-	2225	0	-
Childcare											
If you're looking to build your leadership skills or to improve your prospects with a higher level qualification, our Diploma programme can help you become a more confident, knowledgeable and effective practitioner.											
Diploma in Leadership and Management in Residential Childcare	WP	52	3	5	Roll on roll off	Contact us	-	-	2882	0	Yes
Conservation and Countryside											
If you're working in the great outdoors and have an interest in environmental issues, we can help you develop the practical techniques you need to safeguard and manage landscapes, woodlands and wildlife habitats.											
Introduction to Sustainable Woodland Management	BH	1	2	1	11 Oct 2025	Morning	-	-	45	0	-
Introduction to UK Ecology	BH	1	2	1	27 Oct 2025	Morning	-	-	45	0	-
Construction - Electrical Installation											
DCG has a reputation across the construction sector for delivering first-rate, up-to-date and relevant training. Join us for convenient part-time study options which will help you advance your career as an electrician.											
City & Guilds Diploma in Electrical Installation (2365)	RH	36	6	2	8 Sept 2025	Evenings	-	-	4358	0	-
Technical Occupational Entry Qualification in Electrical Installation	RH	36	6	3	8 Sept 2025	Contact us	-	-	4704	0	-
Creative Crafts											
Unleash your creativity and showcase your talent with our fascinating courses in creative crafts. You can pursue new interests and finesse your skills on projects which will transform your surroundings.											
Introduction to Upcycling and Crafting	ILK	6	3	0	Roll on roll off	Various	-	Free*	0	0	-
Award in Creative Craft: Crafting and Upcycling	ILK	25	3	1	18 Sept 2025	Thu 10:00 - 13:00 or 17:30 - 20:30	-	Free*	672	0	-
Award in Creative Craft: Crafting and Upcycling	ILK	25	3	2	18 Sept 2025	Thu 10:00 - 13:00 or 17:30 - 20:30	-	Free*	588	0	-
Engineering											
Inject some power into your career plans. Our opportunities for part-time study in Engineering are designed to give you – and your employer – maximum flexibility as they can be fitted around your work commitments.											
Award in Advanced Manufacturing Engineering	RH	36	7½	3	9 Sept 2025	Contact us	-	-	3456	0	Yes
Diploma in Advanced Manufacturing Engineering	RH	36	7½	3	8 Sept 2025	Contact us	-	-	3456	0	Yes

OUR COURSES 2025-2026	Location	Weeks	Hours per week	Level	Start / w/c	Days / Times	Free	Free* (subject to eligibility)	Tuition Fee (£)	Exam Fee (£)	Advanced Learner Loan
Course Title											
Engineering Higher Education											
HNC in Electrical and Electronic Engineering (HTQ)	RH	36	9	4	8 Sept 2025	Contact us	-	-	4250	0	-
HNC in Mechanical Engineering (HTQ)	RH	36	9	4	8 Sept 2025	Contact us	-	-	4250	0	-
Foundation Degree in Engineering - 2 years	RH	36	9	5	2 Sept 2025	Contact us	-	-	8500	0	-
BEng (Hons) Engineering (Top Up) - 1 year	RH	36	9	6	4 Sept 2025	Contact us	-	-	8500	0	-
ESOL (English for Speakers of Other Languages)											
If English isn't your main language, studying at DCG can improve your reading, writing, listening and speaking skills. Our ESOL programme can help you access further education or employment and ensure you feel more confident in everyday life.											
ESOL (Skills for Life) - Entry Level	SJC	14	6	0	Roll on roll off	Contact us	Free	-	0	0	-
Floristry											
If you have a flair with flowers, let your talent blossom with part-time study at DCG. It could be the stepping stone to a change of career, the inspiration for a new business or a chance to refresh your ideas and techniques.											
Floristry Taster	BH	1	3	0	21 Jan 2026	Contact us	-	-	30	0	-
Floristry Taster	BH	1	3	0	25 Mar 2026	Contact us	-	-	30	0	-
Floristry Taster	BH	1	3	0	13 May 2026	Contact us	-	-	30	0	-
Floristry Taster	BH	1	3	0	17 Jun 2026	Contact us	-	-	30	0	-
Make a Door Wreath for Christmas	BH	1	3	1	21 Nov 2025	Contact us	-	-	25	0	-
Make a Door Wreath for Christmas	BH	1	3	1	28 Nov 2025	Contact us	-	-	25	0	-
Make a Door Wreath for Christmas	BH	1	3	1	6 Dec 2025	Saturday Morning	-	-	25	0	-
Certificate in Floral Design	BH	35	3	1	9 Sept 2025	Contact us	-	-	427	0	-
Hand Tied Flowers	BH	9	6	2	8 Sept 2025	Contact us	-	-	400	0	-
Floral Decorating for a Function	BH	5	3	2	9 Sept 2025	Contact us	-	-	50	0	-
Flowers for Church and Religious Celebrations	BH	5	3	2	14 Oct 2025	Contact us	-	-	50	0	-
Funeral Designed Flowers	BH	9	6	2	17 Nov 2025	Contact us	-	-	400	0	-
Seasonal Flowers for the Home	BH	5	3	2	2 Dec 2025	Contact us	-	-	50	0	-
Innovative Techniques in Floral Design	BH	5	3	2	20 Jan 2026	Contact us	-	-	50	0	-
Valentine's Floral Arrangements	BH	1	2	1	12 Feb 2026	Contact us	-	-	40	0	-
Floral Arrangements: Traditional and Contemporary	BH	8	6	2	23 Feb 2026	Contact us	-	-	400	0	-
Trends within the Floristry Industry	BH	5	3	2	3 Mar 2026	Contact us	-	-	50	0	-
Mother's Day Gift	BH	1	2	1	27 Mar 2026	Contact us	-	-	35	0	-
Natural Mechanics for Floristry	BH	5	3	2	21 Apr 2026	Contact us	-	-	50	0	-
Wedding Floral Designs	BH	8	6	2	4 May 2026	Contact us	-	-	400	0	-
Flowers from the Garden	BH	5	3	2	2 Jun 2026	Contact us	-	-	50	0	-

OUR COURSES

2025-2026

Course Title	Location	Weeks	Hours per week	Level	Start / w/c	Days / Times	Free	Free* (subject to eligibility)	Tuition Fee (£)	Exam Fee (£)	Advanced Learner Loan
--------------	----------	-------	----------------	-------	-------------	--------------	------	--------------------------------	-----------------	--------------	-----------------------

GCSE

If you don't have GCSEs – or would like to improve your existing grades – our flexible learning options help you gain these valuable qualifications, which could lead on to further study or new job opportunities. Many of our learners are fully funded for these courses.

GCSE English Language - Adults	ILK	32	2½	2	9 Sept 2025	Tue 18:00 - 20:45 or Wed 10:00 - 12:45	-	Free*	0	0	-
GCSE English Language - Adults	RH	32	2½	2	9 Sept 2025	Tue 18:00 - 20:45	-	Free*	0	0	-
GCSE English Language - Adults	JWC	32	2½	2	10 Sept 2025	Wed 09:30 - 12:15	-	Free*	0	0	-
GCSE English Literature - Adults	JWC	32	2½	2	8 Sept 2025	Mon 09:30 - 12:15	-	Free*	720	0	-
GCSE English Literature - Adults	ILK	32	2½	2	9 Sept 2025	Tue 12:45 - 15:30	-	Free*	720	0	-
GCSE Biology	RH	32	2½	2	8 Sept 2025	Mon 18:00 - 20:45	-	Free*	1008	0	-
GCSE Biology for Adults - Blended Learning	JWC	32	2½	2	10 Sept 2025	Wed 18:00 - 20:30	-	Free*	1008	0	-
GCSE Maths - Adults	ILK	32	2½	2	8 Sept 2025	Thu 09:30 - 12:15 or 18:00 - 20:45	-	Free*	0	0	-
GCSE Maths - Adults	JWC	32	2½	2	8 Sept 2025	Thu 09:30 - 12:15	-	Free*	0	0	-
GCSE Maths - Adults	RH	32	2½	2	10 Sept 2025	Mon 18:00 - 20:45	-	Free*	0	0	-

Health

DCG can help you excel in challenging and rewarding roles across the health and social care sectors. We offer a full range of highly flexible, specialist programmes designed to boost your prospects, whatever stage of your career you've reached.

Introduction to Care	SJC	4	3	0	25 Sept 2025	Contact us	-	-	56	0	-
Award in Preparing to Work in Adult Social Care	SF	12	3	1	22 Sept 2025	Contact us	-	-	445.2	0	-
Award in Preparing to Work in Adult Social Care	RH	6	1	1	Roll on roll off	Contact us	-	-	112		-
Intermediate Certificate in Preparing to Work in Adult Social Care	RH	6	2	2	Roll on roll off	Contact us	-	-	811		-
Diploma in Leadership and Management for Adult Care	RH	52	3	5	Roll on roll off	Contact us	-	-	2882	0	-
BTEC Diploma in Care	WP	52	8½	2	Roll on roll off	Contact us	-	-	2225	0	-
Diploma in Healthcare Support	OS	52	7	3	Roll on roll off	Contact us	-	-	2225	0	-
Diploma in Lead Adult Care	OS	52	7¼	3	Roll on roll off	Contact us	-	-	2225	0	-
Diploma in Residential Childcare	OS	52	1½	3	Roll on roll off	Contact us	-	-	2882	0	-
Award in Mental Health Awareness	DIST	26	1	1	Roll on roll off	Contact us	-	Free*	0	0	-
Certificate in Awareness of Mental Health Problems	RH	12	1	2	Roll on roll off	Contact us	-	-	811		-
Certificate in Mental Health First Aid for Leaders	DIST	26	5	2	Roll on roll off	Contact us	-	Free*	0		-
Certificate in Understanding Mental Health	RH	24	1	3	Roll on roll off	Contact us	-	Free*	811	0	-
Certificate in Principles of Working With and Supporting Individuals with Learning Disabilities	DIST	26	6	2	Roll on roll off	Contact us	-	Free*	0	0	-

OUR COURSES 2025-2026							Location	Weeks	Hours per week	Level	Start / w/c	Days / Times	Free	Free* (subject to eligibility)	Tuition Fee (£)	Exam Fee (£)	Advanced Learner Loan
Course Title																	
Health (continued)																	
Certificate in Understanding Autism	DIST	26	5	2	Roll on roll off	Contact us	-	Free*	0	0	-						
Certificate in Understanding Behaviour that Challenges	DIST	26	4	2	Roll on roll off	Contact us	-	Free*	0	0	-						
Certificate in Understanding Nutrition and Health	DIST	26	5	2	Roll on roll off	Contact us	-	Free*	0	0	-						
Certificate in Understanding Specific Learning Difficulties	DIST	26	5	2	Roll on roll off	Contact us	-	Free*	0	0	-						
Award in Introduction to Counselling Skills	OS	10	3	2	25 Sept 2025	9:30 - 12:30	-	-	168	0	-						
Award in Introduction to Counselling Skills	RH	8	4	2	11 May 2026	17:00 - 21:00	-	-	168	0	-						
Certificate in Counselling Skills	RH	21	4	2	15 Sept 2025	17:00 - 21:00	-	-	811	0	-						
Certificate in Counselling Skills	RH	23	4	2	8 Jan 2026	09:30 - 13:30	-	-	811		-						
Certificate in Applied Counselling Studies	RH	34	4½	3	9 Sept 2025	16:30 - 21:00	-	-	811	0	-						
Certificate in Applied Counselling Studies	RH	34	4½	3	10 Sept 2025	16:30 - 21:00	-	-	811	0	-						
Health Higher Education																	
Foundation Degree: Assistant Practitioner Health and Social Care (HTQ)	RH	35	12	5	9 Sept 2025	Contact us	-	-	8500	0	-						
Health and Safety																	
Put health and safety first by choosing one of our flexible programmes. Whatever your role, first aid should be a key concern and our training will help you keep up to date with the latest thinking.																	
Award in Emergency First Aid at Work	ILK	1	6	3	Roll on roll off	Contact us	-	-	100	0	-						
Award in Full First Aid at Work	ILK	1	18	3	Roll on roll off	Contact us	-	-	290	0	-						
Award in Refresher First Aid at Work	ILK	1	12	3	Roll on roll off	Contact us	-	-	195	0	-						
Horticulture																	
Calling all enthusiastic gardeners ... why not cultivate your skills further with the help of DCG? Join us in the stunning setting of Broomfield Hall for an inspiring learning experience.																	
College Certificate in Garden Design and Landscape Construction	BH	1	24	1	17 Nov 2025	Contact us	-	-	120	0	-						
College Certificate in Pruning	BH	1	12	1	21 Oct 2025	Contact us	-	-	120	0	-						
College Certificate in Pruning	BH	1	12	1	9 Feb 2026	Contact us	-	-	120	0	-						
Certificate of Competence in the Safe Use of Abrasive Wheel Machines (AABW02)	BH	1	6	2	Roll on roll off	Contact us	-	-	255	90	-						
Certificate in Plant Identification and Botany	BH	1	24	2	9 Sept 2025	Contact us	-	-	300	0	-						
RHS Certificate in Practical Horticulture	BH	36	3	2	11 Sept 2025	Evening	-	-	600	0	-						
RHS Certificate in Practical Horticulture	BH	36	3	2	12 Sept 2025	Daytime	-	-	600	0	-						
Certificate in Practical Horticulture	BH	36	3	3	12 Sept 2025	Daytime	-	-	850	0	-						

OUR COURSES 2025-2026												
Course Title	Location	Weeks	Hours per week	Level	Start / w/c	Days / Times	Free	Free* (subject to eligibility)	Tuition Fee (£)	Exam Fee (£)	Advanced Learner Loan	
Hospitality and Catering With the hospitality industry undergoing major transformation, this is a good time to broaden your skills. Our Bakery Diploma is ideal for anyone looking to refresh their know-how.												
Bakery Diploma	WP	18	7	2	Roll on roll off	Contact us	-	-	1645	1500	-	
Inclusion Curriculum (for students with learning difficulties and/or disabilities) Every student has individual needs. Whatever your personal circumstances, we work hard to ensure you fulfil your potential – and can plan your future direction with confidence.												
Adult Options	BH	35	12	0	1 Sept 2025	Contact us	-	-	0	0	-	
Adult Options - Preparing for Employment (1 day)	BH	35	6	0	1 Sept 2025	Contact us	-	-	0	0	-	
Adult Options - Preparing for Employment (2 days)	BH	35	12	0	1 Sept 2025	Contact us	-	-	0	0	-	
Adult Options	ILK	35	12	0	3 Sept 2025	Contact us	-	-	0	0	-	
Adult Options - Preparing for Employment (1 day)	ILK	35	6	0	1 Sept 2025	Contact us	-	-	0	0	-	
Adult Options - Preparing for Employment (2 days)	ILK	35	12	0	1 Sept 2025	Contact us	-	-	0	0	-	
Adult Options - IT and Work Skills	ILK	35	6	0	8 Sept 2025	Contact us	-	-	0	0	-	
IT, Digital Skills and Computer Science Keen to improve your proficiency with Excel or Power BI? Or looking to advance your career as a software developer in the fast-moving digital sector? Log into DCG's expertise for an excellent learning experience.												
Excel for Beginners	ILK	1	7	0	Roll on roll off	Contact us	-	-	125	0	-	
Intermediate Excel	ILK	1	7	0	Roll on roll off	Contact us	-	-	150	0	-	
Advanced Excel	ILK	1	7	0	Roll on roll off	Contact us	-	-	180	0	-	
Beginners Power BI	ILK	1	7	0	Roll on roll off	Contact us	-	-	180	0	-	
Advanced Power BI	ILK	1	14	0	Roll on roll off	Contact us	-	-	375	0	-	
IT, Digital Skills and Computer Science Higher Education												
Foundation Degree (FdSc) in Software Development (HTQ) - 2 years	JWC	32	9½	5	29 Sept 2025	Contact us	-	-	8500	0	-	
Languages Language skills can make a difference in every aspect of your life, whether you want to feel more confident in conversations on holiday or to improve the way you communicate in the workplace. Check out our courses in Spanish and British Sign Language.												
Award in Spanish: Beginners Speaking and Listening	ILK	16	2	0	15 Sept 2025	Contact us	-	-	150	0	-	
Spanish Next Steps (Award in Spanish Reading and Writing)	ILK	20	2½	0	19 Jan 2026	Contact us	-	-	270	15	-	
Award in British Sign Language	RH	30	2	1	17 Sept 2025	Wed 18:45 - 20:45	-	Free*	384	0	-	
Award in British Sign Language	ILK	30	2	1	18 Sept 2025	Thu 18:00 - 20:00	-	Free*	384	0	-	
Basic British Sign Language	RH	6	2	1	Roll on roll off	Wed 18:00 - 20:00	-	-	50	0	-	

OUR COURSES 2025-2026	Location	Weeks	Hours per week	Level	Start / w/c	Days / Times	Free	Free* (subject to eligibility)	Tuition Fee (£)	Exam Fee (£)	Advanced Learner Loan
Course Title											
Languages (continued)											
Basic British Sign Language	JWC	6	2	1	Roll on roll off	Thu 09:30 - 11:30	-	-	50	0	-
Certificate in British Sign Language	RH	35	2½	2	15 Sept 2025	Mon 18:00 - 20:30	-	Free*	600	0	-
Certificate in British Sign Language	RH	35	4	3	16 Sept 2025	Tue 16:30 - 20:30	-	-	724	276	Yes
Professional Construction Higher Education											
High-calibre and dynamic management professionals are urgently needed within the construction industry. If you're looking to take your next career step, DCG will help build your technical skills, practical experience and industry knowledge.											
HNC in Architectural Technology for England (HTQ) - 2 years	RH	34	8	4	15 Sept 2025	Contact us	-	-	4250	0	-
HNC in Building Services for England (Heating, Ventilation and Air Conditioning) (HTQ) - 2 years	RH	34	8	4	15 Sept 2025	Contact us	-	-	4250	0	-
HNC in Construction Management for England (HTQ) - 2 years	RH	34	8	4	15 Sept 2025	Contact us	-	-	4250	0	-
HNC in Modern Methods of Construction for England (HTQ) - 2 years	RH	34	8	4	15 Sept 2025	Contact us	-	-	4250	0	-
HNC in Quantity Surveying for England (HTQ) - 2 years	RH	34	8	4	15 Sept 2025	Contact us	-	-	4250	0	-
Public Services, Security and Offender Management Higher Education											
Raise your skill levels, gain recognised qualifications and meet exacting industry standards with the help of DCG. We have a wealth of expertise in criminal justice, security and offender management to support your career progression.											
Foundation Degree Criminal Justice (Security and Offender Management) (FdSc) - 2 years	BH	32	9¼	5	8 Sept 2025	Contact us	-	-	7500	0	-
BA (Hons) Security and Offender Management (Top Up) - 1 year	BH	32	9¼	6	8 Sept 2025	Contact us	-	-	7500	0	-
Retail											
As the retail industry continues to undergo rapid change, it pays to broaden and update your skills when you're looking for progression and promotion. If you need that extra push to take your career to the next level, DCG is at your service.											
Certificate in the Principles of Customer Service	DIST	26	7	2	Roll on roll off	Contact us	-	Free*	0	0	-
Certificate in the Principles of Warehousing	DIST	26	4	2	Roll on roll off	Contact us	-	Free*	0	0	-
Certificate in Understanding Retail Operations	DIST	26	4	2	Roll on roll off	Contact us	-	Free*	0	0	-
Diploma in Retail Skills	DIST	26	5	2	Roll on roll off	Contact us	-	-	0	0	-
NVQ Certificate in Customer Service	DIST	26	8	2	Roll on roll off	Contact us	-	-	0	0	-
NVQ Diploma in Team Leading	DIST	52	1	2	Roll on roll off	Contact us	-	-	0	0	-

OUR COURSES 2025-2026												
Course Title	Location	Weeks	Hours per week	Level	Start / w/c	Days / Times		Free	Free* (subject to eligibility)	Tuition Fee (£)	Exam Fee (£)	Advanced Learner Loan
Sport Achieve your personal best in an action-packed career centred on sport and exercise. DCG can help you hit your stride if you want to go further, faster as a personal trainer, fitness instructor, sports coach or sports therapist.												
Certificate in Gym Instruction, Nutrition and Instructing Kettlebells (Bundle)	BH	18	6	2	8 Sept 2025	Contact us		-	-	930	0	-
Active IQ Technical Specialist Diploma in Sport Massage Therapy (Bundle)	BH	36	6	3	8 Sept 2025	Contact us		-	-	2225	0	Yes
PTI, Circuit Training, Studio Cycling and Mental Health (Personal Training Bundle)	BH	18	12	3	8 Sept 2025	Contact us		-	-	2225	0	Yes
Certificate in Sports Massage Therapy	BH	24	18	4	27 Oct 2025	Daytime		-	-	811	0	Yes
Sport Higher Education												
Foundation Degree Sports Coaching - Performance and Education - 2 years	BH	30	15	5	15 Sept 2025	Contact us		-	-	7500	0	-
Teacher Training, Coaching and Mentoring Keen to change career to a rewarding role in teaching, training, assessing or educational support? Already working in the sector and need to update your practice or gain new qualifications? DCG has inspirational study opportunities just for you.												
Introduction to Being a Teaching Assistant	OS	8	2	2	6 Nov 2025	Thu 13:00 - 15:00		-	Free*	0		-
Introduction to Being a Teaching Assistant	OS	8	2	2	16 Apr 2026	Thu 13:00 - 15:00		-	Free*	0		-
Certificate for Teaching Assistants	RH	25	3	2	1 Oct 2025	Wed 09:30 - 12:30		-	-	1620	0	-
Certificate for Teaching Assistants	RH	25	3	2	4 Mar 2026	Wed 09:30 - 12:30		-	-	1620	0	-
Diploma for Teaching Assistants	RH	30	3	3	2 Oct 2025	Thu 17:00 - 20:00		-	-	2232	0	Yes
Diploma for Teaching Assistants	RH	30	3	3	2 Mar 2026	Mon 09:30 - 12:30		-	-	2232	0	Yes
Certificate for Higher Level Teaching Assistants	RH	30	3	4	4 Nov 2025	Tue 17:00 - 20:00		-	-	1417	0	Yes
Award in Support Work in Schools and Colleges	RH	25	3	2	1 Oct 2025	Wed 09:30 - 12:30		-	-	648	0	-
Award in Support Work in Schools and Colleges	RH	25	3	2	4 Mar 2026	Wed 09:30 - 12:30		-	-	648	0	-
Award in Education and Training	RH	14	3	3	5 Nov 2025	Wed 17:00 - 20:00		-	-	475	0	-
Award in Education and Training	RH	14	3	3	5 Mar 2026	Thu 17:00 - 20:00		-	-	475	0	-
Award in Education and Training - BSL	RH	15	3	3	28 Jan 2026	Contact us		-	-	475	0	-
Certificate for Forest School Leaders	BH	33	3	3	15 Sept 2025	Contact us		-	-	1488	0	-
Award in Assessing Competence in the Work Environment	RH	18	3	3	Roll on roll off	Contact us		-	-	650	0	-
Award in Assessing Vocationally Related Achievement	OS	18	3	3	Roll on roll off	Contact us		-	-	650	0	-
Award in Understanding the Principles and Practices of Assessment	RH	12	2	3	Roll on roll off	Contact us		-	-	200	0	-
Certificate in Assessing Vocational Achievement (Flexible Location)	-	20	1	3	Roll on roll off	Contact us		-	-	811	0	-

OUR COURSES 2025-2026

Course Title

Location

Weeks

Hours per week

Level

Start / w/c

Days / Times

Free

Free* (subject to eligibility)

Tuition Fee (£)

Exam Fee (£)

Advanced Learner Loan

Teacher Training, Coaching and Mentoring (continued)

Award in the Internal Quality Assurance of Assessment Processes and Practice	RH	45	1	4	Roll on roll off	Contact us	-	-	850	0	-
Award in Leading the Internal Quality Assurance of Assessment Processes and Practice	RH	45	2½	4	Roll on roll off	Contact us	-	-	1000	0	Yes
Award / Certificate / Diploma in Internal Quality Assurance	RH	24	2	4	Roll on roll off	Contact us	-	-	200	0	-

Teacher Training, Coaching and Mentoring Higher Education

Certificate in Education Post 14 (Education and Training) (Cert Ed) - 2 years	RH	33	4	5	9 Sept 2025	Tue 16:00 - 20:00	-	-	3750	0	-
Postgraduate Certificate in Education Post 14 (Education and Training) (PGCE) - 2 years	RH	33	4	7	9 Sept 2025	Tue 16:00 - 20:00	-	-	4250	0	-

WHERE TO FIND US

The Roundhouse

Roundhouse Road
Pride Park
Derby DE24 8JE



Broomfield Hall

Morley, Ilkeston
Derby DE7 6DN



The Joseph Wright Centre


Cathedral Road
Derby DE1 3PA



The Community College

2 Pimlico
Ilkeston
Derbyshire DE7 5JS





Also find us in the community

St James Centre
Malcolm Street
Derby DE22 8LU

The Community Enterprise Centre
Sheridan Street
Sinfen
Derby DE24 9HG

Derwent Stepping Stones
St Marks Road
Chaddesden
Derby DE21 6AH

Important information

DCG has a range of policies and procedures in place covering issues such as proof of identity, protection of personal data, criminal convictions and equality and diversity.

For full details, please see our website:
www.derby-college.ac.uk/student-support



DCG

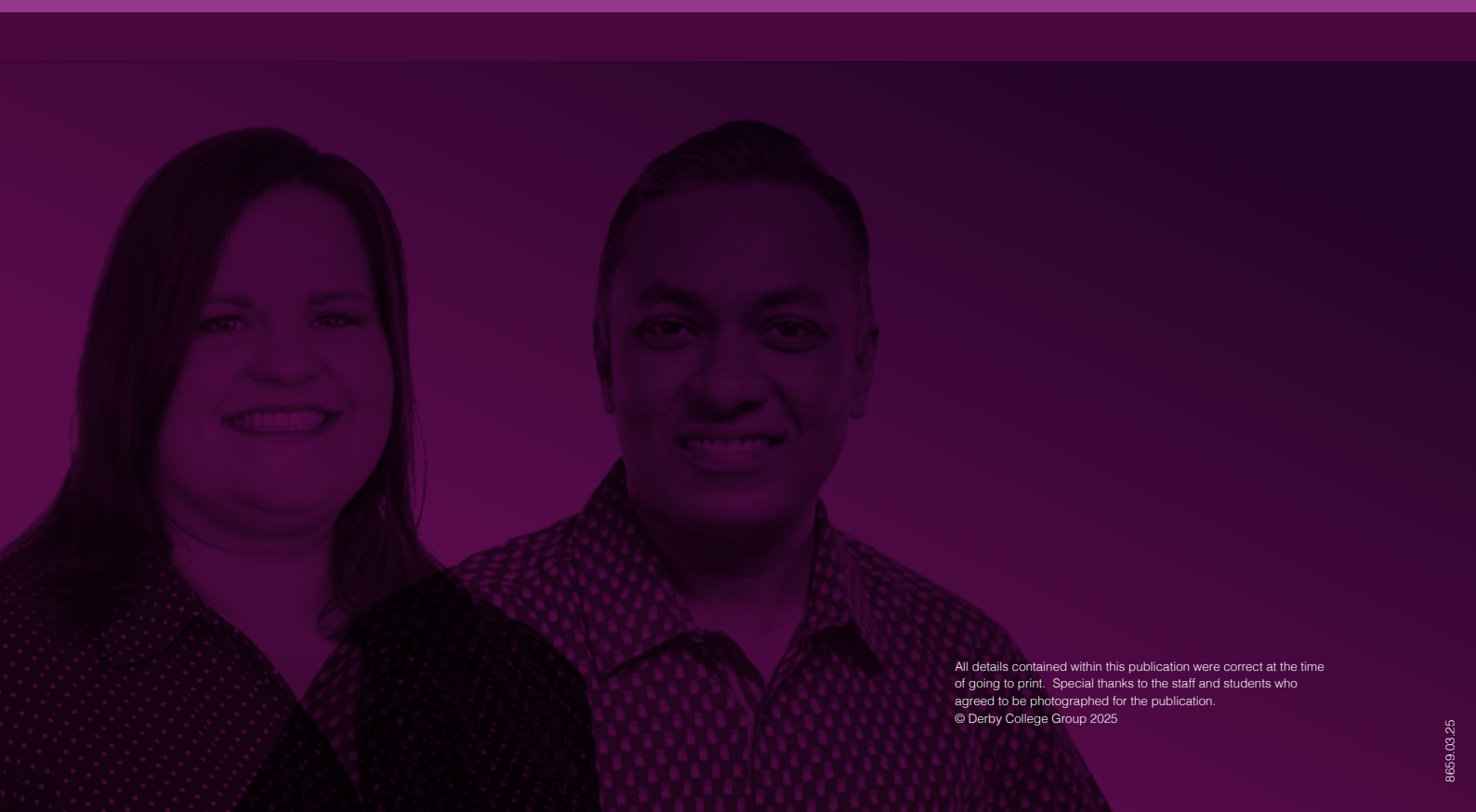
DERBY COLLEGE GROUP

0800 028 0289

enquiries@derby-college.ac.uk

www.derby-college.ac.uk

Follow us on:



All details contained within this publication were correct at the time of going to print. Special thanks to the staff and students who agreed to be photographed for the publication.

© Derby College Group 2025