

Here is the latest news from Derby College

[View this email in your browser](#)



**Dates for your diary!**

Current students at Derby College

[Term Dates](#)

[Parents Evening Dates 17/18](#)

Prospective students of Derby College

[Information Evenings and general events](#)



**Maths and English**

To equip your child with the skills and knowledge needed, revision is key. Creating and following a maths and English revision plan will enable them to focus on the skills they are confident with and the areas that they feel they need more support.

Accessing resources outside of College will help them to develop their skills. We have Doodle and Moodle pages for both maths and English that can be accessed at any time. There are specific resources on key topics that will develop and support their learning.

We are holding a Maths Easter conference 27th – 29th March; your child will have been informed and asked to identify sessions they would like to attend. On the 27th March, the topics will be for both Functional skills maths and GCSE maths. The 28th and 29th March

will focus on GCSE maths. To prepare students for the GCSE exam we will be carrying out "Walk through mocks" to support students' confidence and exam strategies.

We have also planned an English Easter event focusing on creative writing 26th and 27th March. The sessions are available to all students who are studying GCSE or Functional Skills English. We are very fortunate to have two published writers who will share their skills with students; this will support their confidence in developing ideas in writing. The sessions run by the two writers will be offered on a first come first served basis. Students also have the opportunity to book on the following skills masterclasses "How to use Apostrophes", "How to use Commas", "Common Grammar Errors", and "Spelling Strategies".

Please support your child in attending these events. With your help, we can support your child to reach their full potential.

We hope you have found the GCSE English Paper one leaflet helpful; we will be sending the Paper two leaflet out within the next week.

Please make a note of these important examination dates:

#### **GCSE exam dates - 2018**

*English:*

5<sup>th</sup> June " Paper 1

8<sup>th</sup> June " Paper 2

*Maths:*

24<sup>th</sup> May - Non-calculator

7<sup>th</sup> June " Calculator

12<sup>th</sup> June " Calculator

#### **Functional Skills exam dates - 2018**

*English:*

W/C 12<sup>th</sup> February " Reading

English writing exams will be booked on demand.

*Maths:*

W/C 23<sup>rd</sup> April and 18<sup>th</sup> June

If you have any questions regarding maths and English, please contact the team via [Englishandmaths@derby-college.ac.uk](mailto:Englishandmaths@derby-college.ac.uk)

---



### Merger Talks Commence

Bilborough Sixth Form College and the Derby College Group (DCG) have started initial discussions about a potential merger earmarked for January 2019.

The independent governing bodies of both organisations agreed that a joint Project Steering Group would be formed to progress a merger proposal.

Senior leaders from Bilborough Sixth Form College and DCG met recently and agreed the timeline for a due diligence process to now be progressed. [Read more.](#)

16-18 STUDENT BURSARY FUND/FURTHER EDUCATION FREE MEALS  
**FOR ONGOING SUPPORT**  
FOR STUDENTS WHO HAVE COMPLETED THE FULL APPLICATION

ACADEMIC YEAR 2017/18

**PART A**

**SITE ATTENDED:**

Joseph Wright Centre  Johnson Building  Hudson Building  Other - please specify   
Roundhouse  Broomfield Hall  Ilkeston

Term applied for: Term 2  Term 3

A new claim must be made at the beginning of each term - with recent proof of household income/benefits dated within the last 3 months if your financial situation has changed. Incomplete forms will not be processed and will be returned to you. All applicants must be home students or have special residency status under the Bursary guidelines and cannot be supported through another Government Training Scheme or undertaking a waged Apprenticeship. Applicants can only be supported if their course is funded by the Funding Body.

**YOUR DETAILS:**

Student Identification Number:

Date of Birth:  Current Age:

DERBY college

### Term 3 bursary (after the Easter Holidays)

For continued bursary support in the final term your child needs to [complete a continuation form](#). If the family circumstances have not changed we no longer need to see any proof of evidence, just sign and print your name in Part B of the form. It's not too late to apply for Term 2 if your child hasn't already got support in place – just [download the form](#) and return to the Student Service help desk.



### Careers

The Careers team are starting to focus on supporting students to plan their next step, especially if their current course finishes this summer. We are in the process of updating the 'My Career' site on Moodle. Over the next few weeks the new look, easier to use site, will be finalised and will offer a range of updated resources covering options including job searching,

apprenticeships, interview skills, further study and higher education, plus tools to help those who are unsure about what to do next. Students can access the site at any time via

the College website. In addition, the Careers staff are available at various times on all sites to offer face to face help and guidance on next steps, where needed

---



### **Derby Resignalling – improving future performance**

Derby Resignalling is the biggest rail investment in Derby for decades and will create a modern and improved track layout through the station area. It is also a key part of the Midland Main Line Upgrade – the largest upgrade of the line to take place since it opened in 1870, which supports better journeys between Sheffield, Derby, Nottingham and London.

This £200m Derby Resignalling investment is being delivered by Network Rail working in partnership with East Midlands Trains and CrossCountry and **while Derby Station remains open throughout the work, customers travelling to and through Derby will experience significant disruption between 22 July and 7 October 2018**. To help everyone plan ahead, a dedicated customer website is now available, covering both East Midlands Trains and CrossCountry services, making it simple and easy for all passengers to understand the temporary changes to their journeys while the works take place. It is available at <https://www.dby2018.co.uk> For more information about the project visit <https://www.networkrail.co.uk/derby-r...> and follow [#dby2018](#) on Twitter for regular updates. For all our national news, campaigns and to see how we're at the heart of revitalising Britain's railway, please follow: <http://www.facebook.com/networkrail> <http://www.instagram.com/networkrail> <http://www.linkedin.com/company/netwo...> <http://twitter.com/networkrail> <http://www.youtube.com/networkrail>

---



### **Lambing Sunday**

Sunday 18 March 2018 - 11:00 - 15:00

**ENTRANCE BY  
PRE-PAID TICKET ONLY**

Come and see the new born lambs and animals at the Broomfield Hall Campus

### **Plus;**

Animal Care Unit will also be open for people to see the animals including the Porcupine, Wallabies, Donkeys, Meerkats, Reptiles and much more...

[Find out more.](#)

---

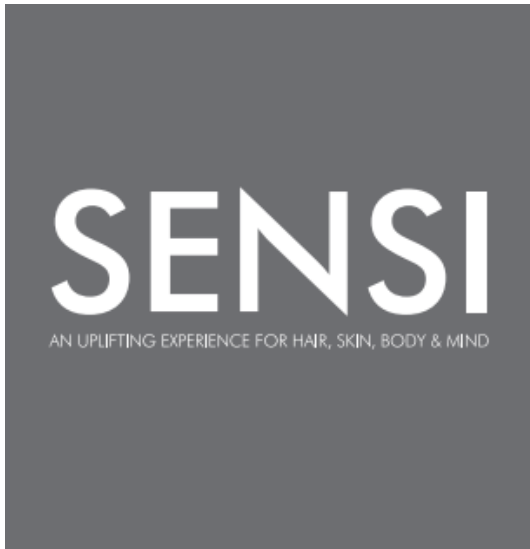


### **ENTREPRENEURIAL STYLISTS JOIN NEW DERBY COLLEGE SCHEME**

Five graduate hair stylists at Derby College have returned to the SENSI commercial training salon at the Roundhouse in Pride Park to work on a self-employed basis and learn essential business and enterprise skills for their future careers. [Read](#)

[more.](#)

---



**SENSI - An uplifting experience for skin, body and mind**

Derby College has two hair and beauty salons, one at The Roundhouse Derby and one at Ilkeston Pimlico campus.

**WE NEED YOU!**

**Barbering clients required for hair cuts** on Friday at SENSI Roundhouse 12.30-3pm Â£2.

No need to book just drop in!

**Hairdressing clients required for blow drying, setting, basic colouring** - Thursdays 9.30am-12noon at Ilkeston.

**Call 01332 387 474 for more information.**

*It's never too late to learn*

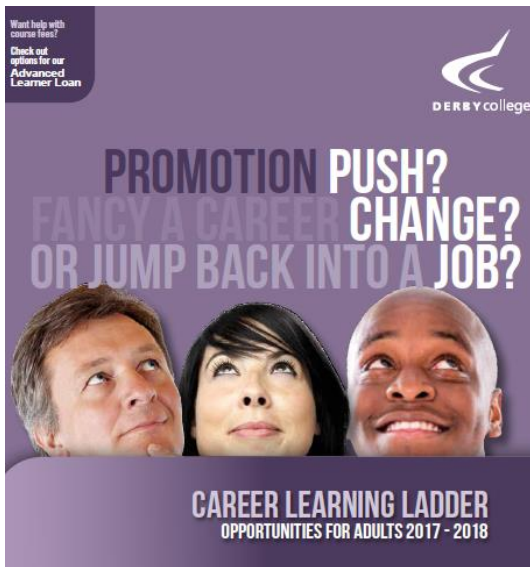


**Do you want to improve your skills and prospects?**

Do you need an up-to-date maths or English qualification on your CV? Have you been away from education for a while and are now keen to refresh your skills? Would you like to be confident in helping your children with their homework? **Then why not consider a FREE Adult Maths and English course at Derby College?**

[Read More.](#)





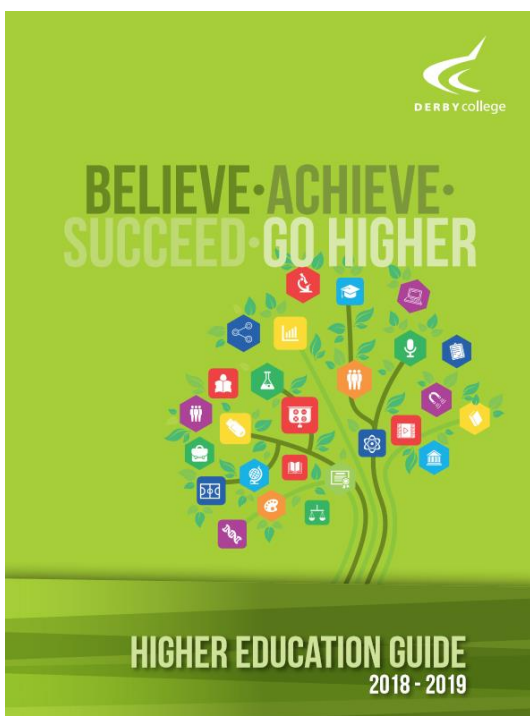
## Career Learning Ladder opportunities for adults 2017 - 2018

Our Career Learning Ladder guide is full of inspiration for anyone who wants to take the next step on their journey to success in work and life. Whether you're keen to upgrade and update your skills, looking for a promotion at work, planning a change of career, hoping to launch your own business or considering university-level study, Derby College will put you on the right pathway. [Read more online](#) about study programmes or [download your copy of the Career Learning Ladder](#).

**Advanced Learner Loan**

## ADVANCED LEARNER LOANS

If you are aged 19 or over, you could qualify for a new type of loan to help pay for your tuition fees as you prepare to head further up the career ladder.



## NEW: Higher Education Prospectus

At Derby College, we recognise that higher education is a sound investment in your future. Whether you want to gain an edge in the job market, enhance your promotion prospects or even chart a completely new career direction, we can help you to achieve your ambitions.

If you are considering a higher education course or looking at the options available to your child after their current College study programme. It's vital to research thoroughly and choose wisely – and this prospectus is an excellent starting point.

[View the Higher Education Prospectus.](#)

---



### Learning for Leisure

Take a look at our part-time learning opportunities.

Our courses have been designed for adults who are looking to pursue a hobby or learn a new skill. This year we also have a selection of adult and child learning workshops to inspire the whole family. [Read more.](#)



**There's more to Derby College**  
*We have a number of facilities & services open to the public*



ENGINE SHED   SENS1   Littleexplorers   theGARAGE @ Derby College   theflorist   HARBORNE EVENTS   dog   DERBY COLLEGE







*Copyright Â© 2018 Derby College, All rights reserved.*

You are receiving this Derby College e-shot because you registered your details with us online @ [www.derby-college.ac.uk](http://www.derby-college.ac.uk) if you would like to unsubscribe from this mailing list email [rebecca.hinds@derby-college.ac.uk](mailto:rebecca.hinds@derby-college.ac.uk)

**Our mailing address is:**

Derby College  
The Roundhouse  
Roundhouse Road  
Derby, Derbyshire DE24 8JE  
United Kingdom

[Add us to your address book](#)

[unsubscribe from this list](#) [update subscription preferences](#)

