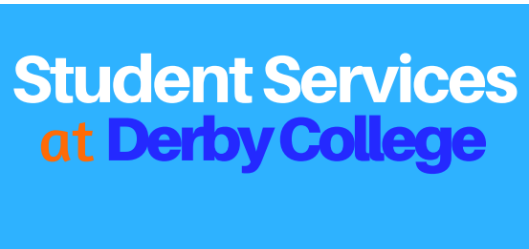


Here is the latest news from Derby College

[View this email in your browser](#)



Dates for your diary!

Current students at Derby College

[Term Dates](#)

[Parents Evening Dates 17/18](#)

Prospective students of Derby College

[Information Evenings and general events](#)



Working on maths and/or English at home has been proven to increase students'™ chance of gaining a grade 4 or above in GCSE. This is also true for achieving Functional Skills.

Your child can access BKSB from home and work on key skill areas they need to develop. When homework is set, can you please encourage your child to complete it on time and hand it in. This will help their teacher ensure they are on track.

The College will be offering sessions to support with exam coping strategies. These will not only help with English and maths exams, but

also exams in the area they are studying.

College life is in full swing and exam time will be with us very soon. Please make a note of these important dates:

GCSE exam dates - 2018

English:

5th June â€“ Paper 1

8th June â€“ Paper 2

Maths:

24th May - Non-calculator

7th June â€“ Calculator

12th June â€“ Calculator

Functional Skills exam dates - 2018

English:

W/C 5th and 12th February â€“ Reading

W/C 30th April and 8th May â€“ Writing

Maths:

W/C 23rd April and 18th June

If you have any questions regarding maths and English, please contact the team via Englishandmaths@derby-college.ac.uk



The Careers team are currently supporting over 600 level 3 students to research and apply for Higher Education choices, via the UCAS application process.

80 applications have already been submitted to UCAS, with students applying for a wide range of subject areas, including; Psychology, International Relations, Primary Education, Veterinary Nursing, Medicine, Counselling Practice, Nursing, Art History, Accounting, Illustration, Policing, Social Work, Acting, Human Resource Management, Paramedic Science and Hospitality Management.

If you are supporting a student who is in the process of applying, or considering applying, for Higher Education this year, please ask them to complete and submit their online UCAS form as soon as possible and also see their personal tutor to complete the hand-in checklist. Careers staff are available on all sites at various times for students to call in for advice or assistance.

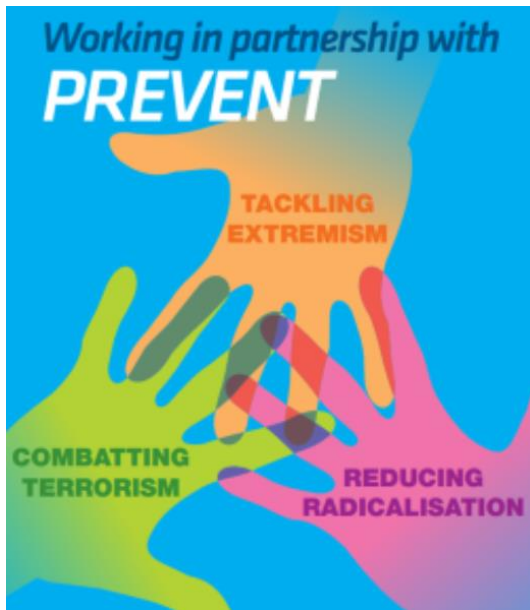
All student groups have received a session delivered by Careers staff on 'Applying to Higher Education' and been given a comprehensive 'Applying to HE' guide to help with all aspects of the process. Limited replacement paper copies of the booklet are available from Careers staff and an electronic version of the booklet is available on the 'My Career' site on Moodle.



Our online applications are now open for full time study programmes for school leavers starting College in September 2018. Our BRAND NEW 'Career and Technical opportunities for school leavers 2018/2019' publication, will help you to discover the exciting opportunities your child can choose from - all our pathways are designed to help prepare students for success in the world of work!
[Download your copy.](#)



It is not too late to apply for support from the bursary Students who are eligible can receive financial support to help pay towards course related costs, such as equipment, trips, travel to and from College and meals while they are on a College programme. Forms and advice are available at the Student Service help desks on every campus.



The theme for tutorials and enrichment in November has been safeguarding. During the month Personal Tutors have delivered tutorials on a range of safeguarding topics including eSafety, Road Safety, Personal Safety, Gang Culture and PREVENT which is the government's counter terrorism strategy.

The Personal Coach team have also worked across College to raise awareness of the dangers of Child Sexual Exploitation via sessions in the tutorial programme. This tutorial session raised awareness of risky online behaviour, the tactics used by online groomers and provided a greater understanding of consent.



ANIMAL UNIT 'CHRISTMAS THEME' OPEN DAY

Sunday 10th December 2017
10am - 4pm (Last Entry 3.30pm)

Animal unit 'Christmas Theme' Open Day

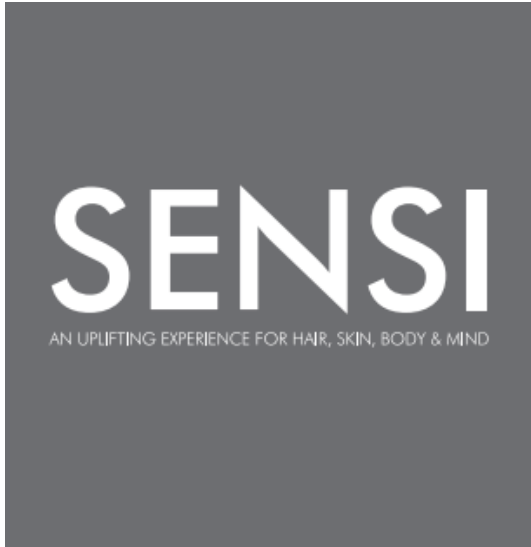
Sunday 10th December
10.00 - 16.00 (last entry 15.30)
Broomfield Hall Campus, Morley,
Ilkeston, Derby, DE7 6DN

Come along to the Animal Unit 'Christmas Theme' open day and enjoy:

- Activities for kids
- Meet the animals including feeding and handling
- Raffle
- Christmas Trees for sale (at the Plant Centre)

Entrance Fee Â£3 per adult and Â£1 per child

[Find out more.](#)



Fully qualified hair stylists now work in the **SENSI Roundhouse salon** offering you a wide range of professional hair services. **Take advantage of our introductory offers:** Receive 10% off any hair service with a Graduate Stylist at your first appointment. Or, book your appointment for a Monday when we drop our prices!

[View introductory offers.](#)

[View full price list and opening hours.](#)

To book an appointment at Roundhouse SENSi call 01332 387474

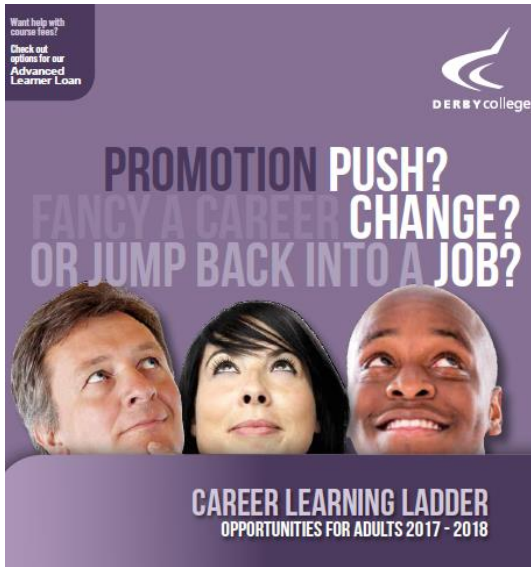
It's never too late to learn



Do you want to improve your skills and prospects?

Do you need an up-to-date maths or English qualification on your CV? Have you been away from education for a while and are now keen to refresh your skills? Would you like to be confident in helping your children with their homework? **Then why not consider a FREE Adult Maths and English course at Derby College?**

[Read More.](#)



Career Learning Ladder opportunities for adults 2017 - 2018

Our Career Learning Ladder guide is full of inspiration for anyone who wants to take the next step on their journey to success in work and life. Whether you're keen to upgrade and update your skills, looking for a promotion at work, planning a change of career, hoping to launch your own business or considering university-level study, Derby College will put you on the right pathway. [Read more online](#) about study programmes or [download your copy of the Career Learning Ladder](#).

Advanced Learner Loan

ADVANCED LEARNER LOANS

If you are aged 19 or over, you could qualify for a new type of loan to help pay for your tuition fees as you prepare to head further up the career ladder.



Are you a non-graduate educational practitioner working with children and young people who have been identified as having a special educational need or disability?

If so, our Foundation Degree in SEND could be for you!

You will take a module to develop your study skills, engage in personal and professional development, and gain an introduction to SEND. You will explore developmental diversities, ethics, attitudes and values, and protecting children and young people with SEND.

As you progress through the course, you will also learn about working with parents, carers and caregivers, conduct action research in a SEND context, and study two optional modules.

[Read more.](#)



Learning for Leisure

Take a look at our part-time learning opportunities.

Our courses have been designed for adults who are looking to pursue a hobby or learn a new skill. This year we also have a selection of adult and child learning workshops to inspire the whole family. [Read more.](#)



Your mind and well-being

Yoga promotes relaxation and reduces those everyday stresses.

Come and regain control of your mental health and personal well-being, all within a supportive and non-judgemental learning environment. Book a yoga and relaxation session held at our Joseph Wright Centre campus:

[Yoga & Relaxation \(4-Weeks\)](#)

[Yoga & Relaxation \(6-Weeks\)](#)

[Yoga & Relaxation \(7-Weeks\)](#)



LATEST NEWS

There's more to Derby College
We have a number of facilities & services open to the public



DERBY college



Copyright Â© 2018 Derby College, All rights reserved.

You are receiving this Derby College e-shot because you registered your details with us online @ www.derby-college.ac.uk if you would like to unsubscribe from this mailing list email rebecca.hinds@derby-college.ac.uk

Our mailing address is:

Derby College
The Roundhouse
Roundhouse Road
Derby, Derbyshire DE24 8JE
United Kingdom

[Add us to your address book](#)

[unsubscribe from this list](#) [update subscription preferences](#)

